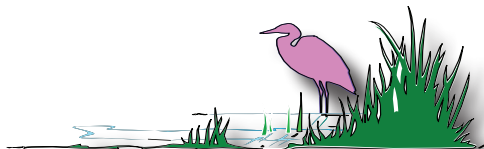


# FLOREX 2012

*The night of  
April 14, 1912  
at 11:40pm the  
"unsinkable"  
RMS Titanic  
struck the  
iceberg that  
would sink the  
grand ship less  
than three hours  
later. May all  
the souls lost  
rest in peace  
through the ages.*



Brought to you by the  
**Florida Stamp Dealers' Association**  
and the  
**Central Florida Stamp Club**



SEE US IN BOOTH 41

# **WE BUY STAMP COLLECTIONS ACCUMULATIONS U.S. MINT SHEETS**

**The Browse House**  
1335 Ridgewood Ave.  
Holly Hill, FL 32117



**386-672-1673**  
**[browsehousetamps@gmail.com](mailto:browsehousetamps@gmail.com)**

**US & WORLDWIDE**

# Table of Contents

- Welcome Letter from the President of the Florida Stamp Dealers' Association & General Chairman of FLOREX
- Welcome Letter from the President of the Central Florida Stamp Club
- FLOREX Retrospective
- Welcome Letter from H. James Maxwell, President of the China Stamp Society
- FLOREX Website Information
- Schedule of Show Events
- List of Dealers' Specialties (in name order)
- List of Dealers (in booth order)
- Show Booth Layout
- Events Listing
- First Day of Issue Event Information
- Exhibitor Prospectus for 2012
- APS Judges/Medals/Future FLOREX Dates
- Exhibit Frame List for 2012
- Exhibit Award List



## FLOREX

### **General Chairman**

Francis Ferguson

### **Assistants to the**

### **General Chairman**

Robert Dowrick &  
Newton Kulp

### **Exhibit Chairman**

Robert Fisher

### **Registration/Proofing**

Ann Dowrick

### **Security Chairman**

Phillip E. Fettig

### **Youth Coordinator**

Randall Priest

### **Editor**

Francis Ferguson

## FSDA

### **President**

Francis Ferguson

### **Vice President**

Robert Davison

### **Secretary**

Lucy Bricker

### **Treasurer**

Kathy Tiger-Savedow

### **Board of Directors**

Sy Bricker

Peter Dearing

Randy Savedow

### **Immediate Past Pres.**

Sheldon Rogg

## CFSC

### **President**

A. Stephen Patrick

### **Vice President-Prgs**

Robert Dowrick

### **Vice President-Ops**

Francis Ferguson

### **Secretary**

Josh Furman

### **Treasurer**

Jim Archbold

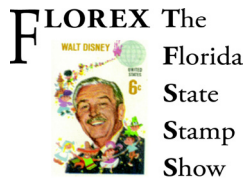
### **Board of Directors**

Phillip E. Fettig

Robert Fisher

Newton Kulp

Randall Priest



Welcome one and all to FLOREX 2012!

This year I wear two hats -- the first as the President of the FSDA and the second as the General Chairman. I would like to welcome the dealers and the general public to the largest WSP event in the southeastern United States.

We have 50 dealers occupying 63 booths from all over the United States, as well as also from Canada and Great Britain. You will find a wide range of material covering just about any need or desire. Take the time to browse through the extensive stock of material to find that one treasure that has eluded you for years.

The show is fortunate to have the First Day of Issue event for the four Waves of Color stamps to be issued on December 1st. The ceremony will be starting at 9:00 am and there will be representatives available from the USPS to cancel covers. This is only the second time in the 59 year history of FLOREX that a FDOI event has occurred.

I would like to extend a hearty "Thank You" to all the volunteers from the Central Florida Stamp Club. Without this pool of dedicated individuals things simply would not get done. As you interact with these valued helpers, acknowledge them with a smile and a thank you.

Enjoy the show -- and should you have any questions or concerns, please feel free to stop me and chat.

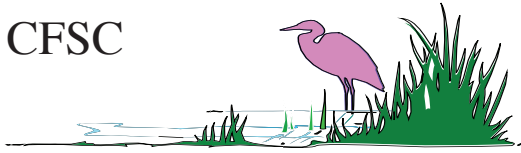
Yours Sincerely,

A handwritten signature in black ink, which appears to read "Francis Ferguson". The signature is fluid and cursive.

Francis Ferguson  
FSDA President 2012/2014  
General Chairman, FLOREX



# CFSC



## Welcome Philatelists

The Central Florida Stamp Club has helped host this event every year since 1986. Our theme is to commemorate the 100th anniversary of the Titanic disaster. Yes, it was a tragic loss of property and life, but each setback like this improves design and response issues and reminds us about the frailty of life. “Welcome aboard” to our celebration.

We welcome our exhibitors, judges, dealers and collectors who make the show happen and a special welcome to the China Stamp Society, meeting for their annual convention.

We applaud the USPS for choosing FLOREX to introduce the new high-value definitive stamps in a first day ceremony. This important issue will forever be associated with Orlando. Please patronize the USPS booth and enjoy making those special souvenirs of this occasion a part of your collection.

Congratulations to Michael Rogers for bringing another public auction to our site. We welcome bidders from all over the world and wish all good luck towards winning their special lot.

If you have any questions, ask our people at the welcome table. Please visit our Youth Table to see our work with junior collectors. And if you are local and looking for a place to learn more about stamp collecting, come visit our club at the Marks Street Center on the first and third Thursday nights. We love to make new friends and members have the opportunity to buy, sell or trade stamps.

Yours Sincerely,

A handwritten signature in black ink that reads "A. Stephen Patrick". The script is cursive and fluid.

A. Stephen Patrick  
President CFSC, 2012/2014

# Looking Back at My 40 Years at FLOREX

## by Phillip E. Fettig

Ann and I collected stamps long before we knew each other and later it became part of our dating. In fact, some of our early memories together resulted from visits to LeDuc's Stamp Store in St. Petersburg. These trips were delightful days spent stamping in the morning and bowling in the afternoon. With her Dad along it did not count as our "one allowed date" for the week. After we married and were living in Eau Gallie, FL, we would drive to Orlando and visit the many stamp stores.

Then, in 1971, our philatelic life changed forever when we visited our first stamp show – FLOREX. We were astounded at the never-ending supply of material to peruse. We established a pattern that lasted for years - we would enter the show at opening time and go our separate ways. Every so often we would pass in the aisles and compare purchases. At the time Ann was collecting Japan while I visited the U.S. dealers and was fascinated by the exhibits. During one show, I walked down the aisle and stood in front of a table occupied by Herman "Pat" Herst, Jr. I had memorized passages from "Nassau Street" and stood in awe staring at him. Pat finally asked if he could help me -- and all I could do at first was stammer.

In 1972, FLOREX was held in Clearwater and for 14 years stayed centered in the St Petersburg/Tampa/ Clearwater area. This suited us as our parents lived in Clearwater and provided food, lodging and trustworthy babysitting while we were at the show. By 1979 I joined the Central Florida Stamp Club and Florida Stamp Dealers' Association (FSDA) and both Ann and I decided to become more involved. In 1982, we volunteered to help sell show covers (Figure 1) at the FLOREX table at the St. Petersburg Bayfront Hilton Hotel. The Hilton was a great facility, but FLOREX later conflicted with a downtown Grand Prix auto race which would block traffic.

In 1983, I became the Assistant Exhibits Chairman. Translated, that means I almost ruined my back moving and loading those old heavy nine-page wooden exhibition frames. At the 1985 show in the Tradewinds Resort, the exhibits were divided into three small rooms. Layout mistakes caused us to move them around a few times. It was late, I was tired and on my knees putting pages in a frame when an older gentleman spoke to me. I turned to see, also on his knees, Pat Herst. From that meeting a philatelic friendship was made and I enjoyed contact with him until the late 1990s.

In 1985, The Florida Federation of Stamp Clubs (FFSC) decided to move the show to a centrally located site in Orlando, home of the I-4/Florida Turnpike crossroads. In early 1986, FFSC President Henry Gobie and VP Bill Bomar asked me to act as the General Manager which resulted in 14 years as Chairman or Assistant GC. One of my first acts was to ask the late Barry Savedow to be Bourse Chairman. I immediately received a call from a prominent Florida dealer who warned me that it was a terrible mistake and that FLOREX would lose dealers. Thankfully, I ignored that advice and until FLOREX ended its first run in 1999, we had very few years without a full house of dealers. As the 1986 FLOREX closed, a nice lady thanked me for a nice show and asked "when will you start working on next year?" She was shocked to find out that when dealing with a national level show, you are always working on some phase of the next five years' shows.

By 1991, I was getting a little tired and asked that I be replaced. At the 1992 show, they gave me a plaque for service, but no replacement, so I agreed to stay for 1993. Finally, the

late Clyde Jennings told me a retired USCG Officer was moving to Florida and the plan was for us to share the job as “co-chairmen”. I had the pleasure of meeting Phil Stager at SARAPEX in 1994 and it only took a few minutes to realize that a Coast Guard Officer and a Navy Chief Petty Officer could work just fine together, without the cumbersome co-chairmen part. We divided up the duties, had our discussions regarding issues and then whichever one of us was General Chairman and we went about our duties.

By the late 1990s, it was clear that both the FFSC and FLOREX were in serious trouble with a lack of volunteers to step into the leadership roles. When the FFSC voted to disband after the 1999 show, I was on the FSDA Board as Past President and immediately started plans for a replacement show. At the last FFSC General Meeting, the FLOREX name was purchased for \$1.00 by the FSDA.

The first “Florida State Stamp Show” in the fall of 2000 almost didn’t happen as many dealers wanted to wait and see how it went. I finally called several and told them if they waited to see how it went, the show would die from lack of support. It happened and the rest is history.

In 2002, I talked Francis Ferguson into being a co-General Chairman so he could learn the ropes. That was a great decision as in early 2003 I had some medical problems and cut out all of my philatelic activities. For the next few years, I was a “silent advisor” whenever Francis had any questions. During that time period it was the hard work and perseverance of FSDA President Earl Reeder, along with Francis, that brought the show back into full status as an APS World Series of Philately (WSP) show. In 2008, FLOREX - The Florida State Stamp Show reclaimed the status of a WSP Show. I’ve been active again, starting out at the registration table and working up to return as a dealer, working at the Security Chairman -- and even exhibiting.

It has been a great 40 years working with a lot of super people. I’m not much for records, but I never thought anybody would pass my 10 ½ years as General Chairman. Well, Francis will tie me this year and it will be his well-deserved title next year. He does need to understand, however, it will be his job to write the next “40 year” article!

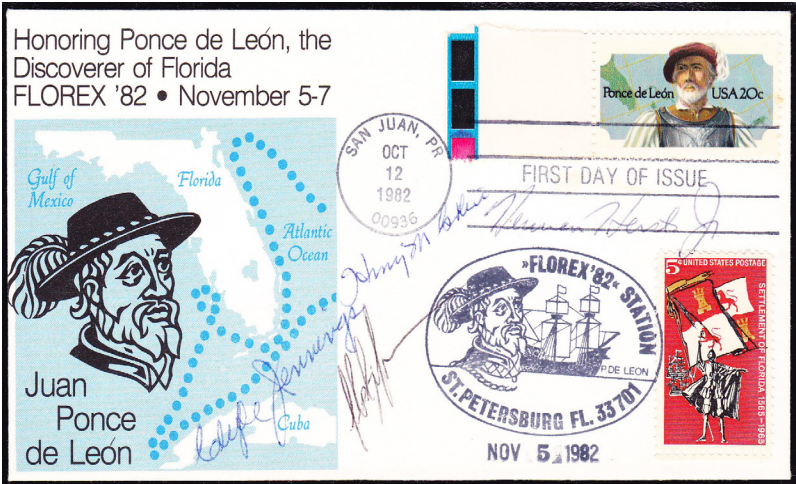


FIGURE 1

# THE CHINA STAMP SOCIETY, INC.

The China Stamp Society (CSS) thanks FLOREX for the opportunity to hold its Annual Convention. The Society welcomes everyone to this year's FLOREX and hopes that you will enjoy yourself at the show and drop by our table if you have time.

The CSS was organized in 1936 as the China Study Group of the American Philatelic Society. It is the oldest active affiliate of APS. Members receive the "China Clipper" magazine six times a year and discounts on books we publish, out of print publications we put on DVDs and other items we sell.

Members enjoy access to the world's largest bi-lingual Chinese philatelic library and a translation service for postal markings and other philatelic items. Annual, regional and local meetings are held at stamp exhibitions around the country and we have six chapters in the US and three international ones. Since 1999, it has provided an expertization and identification service, available to the public.

We publish the China Stamp Society Specialized Catalog of China to 1949, the finest catalog of the Chinese stamps of 1878-1949. Our website offers numerous items for sale to the public, the Stamp and Cover Sales area for members and quarterly online auction for members.

*Much additional information is available to the public on the site:  
[www.ChinaStampSociety.org](http://www.ChinaStampSociety.org)*

Most cordially,

H. James Maxwell, President  
e-mail: [hjmesq@kc.rr.com](mailto:hjmesq@kc.rr.com)

**THANK YOU FOR COMING**

**WE HOPE TO SEE YOU AT  
FLOREX 2013**

**[FLOREXStampShow.com](http://FLOREXStampShow.com)**



# The Proud Sponsor of FLOREX



**Celebrating 52 years of service to the philatelic community.  
1960 - 2012**

## Central Florida Stamp Club

Meetings 1<sup>st</sup> and 3<sup>rd</sup> Thursday of the month.

**TIME:** 6:30 pm to 8:30 pm

**PLACE:** Marks Street Senior Recreational Complex  
99 East Marks Street, Oak Room  
Orlando, FL 32803

More Info: [www.CentralFloridaStampClub.org](http://www.CentralFloridaStampClub.org)



# FLOREX <sup>W S P</sup> 2012

The Florida State Stamp Show -- November 30, December 1 & 2

Home

Auction I

Cachets

Contacts

Dealers

Directions

Events

Exhibits

Future

History

Hosted

Hotel

Hours

Layout

Pictures

Program

Show Flyer

Societies

Sponsor

Updates

Youth

Since 2004 FLOREX has been on the World Wide Web. The site started slowly with very basic information. However, for the last eight years, efforts have been focused on adding a depth of information. We have been able to locate a large amount of historical information that has been subsequently scanned and uploaded. This repository of information is a great resource to chart the history of FLOREX over the decades.

The site is kept current at all times with the most updated information available. Each of the buttons on the left connect to FLOREX related information. Take the time to visit the site and see what is there. You might be pleasantly surprised!

The FLOREX site is owned by the Florida Stamp Dealers' Association and is maintained by one of the members.

If you have any comments or concerns, please contact the webmaster at the e-mail address listed below.

***In particular we are looking for the show booklets from 1955, 1956, 1958, 1960, 1961, 1962, 1963, 1964 & 1967. Please contact the webmaster at your earliest convenience.***

**E-mail: [Show@FLOREXStampShow.com](mailto:Show@FLOREXStampShow.com)**

**Web: [www.FLOREXStampShow.com](http://www.FLOREXStampShow.com)**

# GPS Chapter 23

The Central Florida Chapter of the Germany Philatelic Society will host an informal meeting on Saturday, December 1, at 1:00 PM. All FLOREX attendees are most cordially welcome.

Enjoy an informative program, interesting philatelic material on display, and good fellowship.



Meets on the 2nd Sunday of the month at  
2:00 p.m., September through May,  
at Grace Lutheran Church,  
745 S. Ingraham Ave., Lakeland, Florida.

For Information Contact:

Tampa Bay Area  
Pritt Rebane  
727.812.1255  
pritt@rebane.com

Orlando Area  
Jim Pullin  
407.260.0771  
JRPullin77@gmail.com

Vero Beach Area  
Fred Meder  
772.562.6035  
FMeder1631@verizon.net

# Florida Postal History Society



Do you have an  
interest in Florida  
Postal History?

You found the right  
place!

On our website you will find a wealth of information covering a wide selection of Florida history. Come and see what it is all about at the society meeting at noon on Saturday, December 1<sup>st</sup> during FLOREX 2012.

We will have our annual meeting at the Sarasota National Stamp Exhibition on Feb 2, 2013 at 12:00 pm.

All of our JOURNALS are on-line along with membership information and applications.

Established  
1978

On the web at  
[www.FPHSonline.com](http://www.FPHSonline.com)

# WANTED TO BUY

CLASSICS OF  
JAPAN, CHINA, KOREA  
THAILAND & ASIA  
STAMPS & COVERS

See Us In Booth 50

RISING SUN STAMPS  
P.O. Box 716  
Marshalls Creek, PA 18335-0716

e-mail: [haruyo\\_baker@msn.com](mailto:haruyo_baker@msn.com)

cell phone: 570-350-4393

**SEE US AT BOOTH #11**

- Quality U.S. Mint & Used from #1 through Back-of-Book
- All key items with PF or PSE Certificates • Private Vending

- Classic Canada with Greene Foundation Certificates
  - Canadian Semi-Official Airmail Stamps & Covers
- World's Deepest Stock —

**MARK-LANE STAMPS**

P.O. BOX 626 • WEST HAVERSTRAW, NY 10993

Tel/Fax (845) 362-5330 • E-mail: [RWS45@aol.com](mailto:RWS45@aol.com)



Want Lists • "Fair Dealing Since 1943"



APS • ASDA • CSDA • RPSC



# Learn More, Do More, Enjoy More with APS!

—America's Stamp Club—

## Join Today!

*and save  
more than \$50  
on APS Services*

Membership privileges include:

- Low-Cost Stamp Insurance
- Authoritative Expertizing Service
- Award-Winning Monthly Magazine
- Informative Website — [www.stamps.org](http://www.stamps.org)
- Nation's Largest Philatelic Research Library
- Secure Internet Sales — [www.StampStore.org](http://www.StampStore.org)
- Mail Sales Circuit Service • and much more!

To join online visit: **[www.stamps.org](http://www.stamps.org)**

*New members receive coupons for APS Services valued at more than \$50!*

To request membership information contact:

American Philatelic Society • 100 Match Factory Place, Dept. FS • Bellefonte, PA 16823  
Phone 814-933-3803 • Fax 814-933-6128 • E-mail: [info@stamps.org](mailto:info@stamps.org)



## COLLECTORS EXCHANGE

Dealers in Stamps of Great Britain & Commonwealth

Whether BUYING or SELLING visit us at Booth #22.



We can be found any time at:

[www.BritishStampsAmerica.com](http://www.BritishStampsAmerica.com)

Serving the Philatelic  
Community Since 1980

Cell Phone  
407.620.0908

E-mail  
[colex4stamps@cfl.rr.com](mailto:colex4stamps@cfl.rr.com)

# FLOREX 2012 Dealer List

## A

A&R Stamp	47 & 48
US & World Wide Stamps, Disney & topical, Postal History, FDCs, Airpost, Naval Covers, Collections and Box Lots. Philatelic Literature.	

## B

BEJJCO of Florida, Inc.	42 & 43
US & World Wide Stamps & Covers, US Plate Blocks & FDCs, Postal History, US Precancels, Back of Book.	
Blackjack Trading Company	23
Confederate Stamps & Covers, US Stamps & Covers, Documents, Civil War Letters.	
Bob & Marti's Stamps	7 & 8
Classic & Modern US, PNCs & Coils, Sheets, Plate Blocks, Booklets & Foreign.	
Browse House	41
Lots & Collections, Better US & World Wide Sets, Accumulations, Bulk & Box Lots.	

## C

Castle Rock Stamps	14
Latin America, Proofs/Essays & Postal History.	
Christopher/Richard Covers	5
US & World Wide Postal History, Advertising Covers, Postcards.	
Classic Stamps & Covers	10
US & World Wide Postal History, Specialties, Propaganda, Zepps, Olympics, Old Stamps	
Collectors Exchange	22
Great Britian & Commonwealth, World Wide Topicals, & Postal History.	

# FLOREX 2012 Dealer List

Court Street Stamp & Coin Shop	57 & 58
British Empire, US, Asia, World, US FDCs, Post Cards.	

## D

Double J Stamps	54 & 55
Supplies dealer, albums, mounts, stock books, tongs, sheet albums, cover albums, approval cards, UV lamps, watermark detectors, magnifiers, General US & Foreign material.	
Douglas Weisz U.S. Covers	35
Postal History, First Day Covers, Postal Stationery, Flights Covers.	

## E

Earl T. Reeder	31
US Stamps, Postal History, Revenues.	
EdKen	18
US and World Wide Stamps, Covers & Postal History, US & World Wide FDCs.	
Ed Petrik Stamps	9
New Issues -- Foreign.	

## F

FA Stamps	15-16
US, Japan, Asia & World Wide.	
Fairwinds	6
Postal History, Naval Covers, Flight Covers, Postcards.	
Frank Bachenheimer	3
Quality US stamps, US Revenues & Possessions.	

# FLOREX 2012 Dealer List

## H

- H & S Rogg 19  
US & World Wide Stamps & Covers,  
Kiloware Mixtures, Supplies & Appraisals.

## J

- Jacksonville Stamp & Coin 20  
Classic FDCs, US Singles, Plate Blocks & Sheets,  
World Wide Stamps.
- Jacksonville Stamp & Coin D/D 62  
Dime/Dollar Covers.
- James F. Taff 13  
Confederate States, German Areas, US & British  
Colonies.
- Joanne's Stamps (Robert Sazama) 49  
Dime/Dollar.

## L

- Labron Harris 21  
US & World Wide Postal History & Appraisals

## M

- M.T.O. Stamps 36 & 37  
US Used & Mint, Sheets, Booklets, Plate Blocks,  
Back of Book & PNC Strips of 5.
- Mark-Lane Stamps 11  
US & Canada Mint/Used, Canadian semi-official.
- Marshall's Stamps for Collectors 39  
US & World Wide Stamps & Postal History &  
FDCs & Postal Stationery, Post Cards.
- Martin Farber 56  
France & Colonies, Scandinavia, better World Wide.
- Michael 17  
US Space, US Postal Cards & Stationery, US Mint &  
Used, Florida Postal History.



# FLOREX 2012 Dealer List

Michael J. Stern	30
US, Canada, British Commonwealth, World Wide.	
Michael Rogers, Inc	29
China, Asia.	
Mountainside Stamps, Coin and Currency	28
US, British Commonwealth, Europe, Asia, US Plate Blocks & Booklets.	

## N

New England Stamp	44, 45 & 46
World Wide Stamps & Covers, US Stamps & Covers, Postal History Collections & Lots, Dollar Covers.	
Newport Harbor Stamp Company	38
US Classics, Plate Blocks, Errors.	
Norman Hinds, Jr. Philatelics	61
German Offices Abroad, German Colonies & US.	

## P

P. Schwender	2
World Wide Stamps,	

## Q

Quality Stamps	12
Always Buying, Free Appraisals. World Wide & US Stamps & Covers & Collections.	
Queen City Coin & Stamp	32
New Issues, Topicals, US, British Commonwealth, France & World-Wide.	

## R

RKA Covers	63
First Day Covers, Naval & Air Mail Covers, Postal History.	
Rising Sun Stamps	50
Japan, China & Korea Stamps & Covers.	

# FLOREX 2012 Dealer List

Robert M. Sazama	33
World Wide Stamps.	
Roy's Stamps	59 & 60
Canada & British Commonwealth, Stamps & Covers.	

## **S**

S. George Trager	4
US & Foreign First Day Covers, Postal History.	
Stamp Center of Texas	26
World Wide Stamps & Postal History.	
Stamps Unlimited of GA, Inc.	40
Retail Stamp Shop, Mail Order, World Wide & Supplies.	
Stephen T. Taylor	27
US Postal History & Covers. US Possessions & Confederate Postal History.	
SunCoast Stamp Company, Inc.	51, 52 & 53
US Stamps & Covers, World Wide Stamps & Covers, Confederate Stamps & Covers, Large Lots. Dime/Dollar.	

## **T**

The Stamp Explorer	24 & 25
US, British, Commonwealth, World Wide Stamps Covers & Collections, Picture Postcards & Autographs.	
The Stamp Professor	1
Classic US & Foreign.	
The Stamp-Tique, Inc.	34
US Classic Stamps & Postal History, Canada, Hong Kong, Australia & New Zealand.	

SEE US IN BOOTHS 7 & 8



## Bob & Marti's Stamps

U.S. & Foreign Stamps

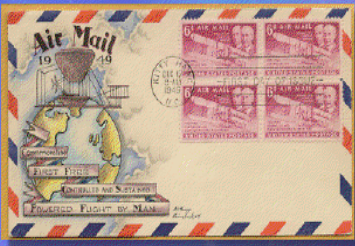
Buying and Selling

BONDOQB@VERIZON.NET

Specializing in U.S. Stamps

P.O. Box 1859 Oneco, FL 34264-1859 Phone 941-756-5908

SEE US IN BOOTH 35



## Douglas Weisz U.S. Covers

*Buying and Selling*

FLIGHTS: CAM, FAM,  
Catapult, Zeps, Lindbergh

QUALITY FIRST DAY  
COVERS

POSTAL HISTORY,  
NAVAL EVENTS,  
WWII PATRIOTICS,  
INAUGURALS

P.O. Box 1458-D, Mc Murray PA 15317  
773-914-4332 • E-Mail [weiszcovers@yahoo.com](mailto:weiszcovers@yahoo.com)

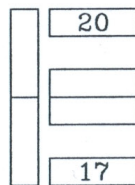
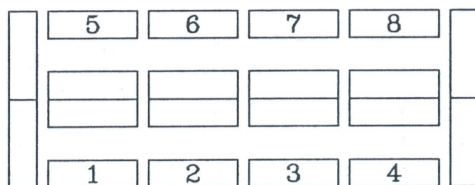
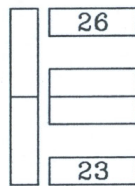
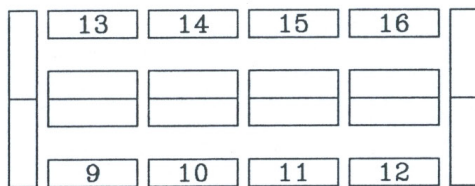
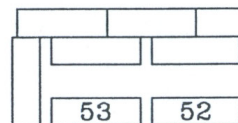
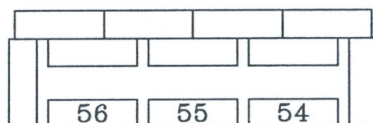
**WWW.DOUGLASWEISZ.COM**

Booth	Name	City	State	Phone	E-mail
1	The Stamp Professor	St. Augustine	FL	904-471-1549	TheStampProf@gmail.com
2	P. Schwender	Venice	FL	941-426-1482	psp68@aol.com
3	Frank Bachenheimer	Glenview	IL	847-480-1880	frankb@astampdealer4u.com
4	S. George Trager	Vero Beach	FL	772-567-7566	None
5	Christopher/Richard Covers	High Point	NC	352-220-2402	wdipaolo@triad.rr.com
6	Fairwinds	Beaufort	NC	252-504-2137	fairwinds66@live.com
7-8	Bob & Matti's Stamps	Oneco	FL	941-756-5908	bondoqb@verizon.net
9	Ed Petrik Stamps	Hernando	FL	352-726-2568	edpetrikstamps@tampabay.rr.com
10	Classic Stamps & Covers	Atlantic Beach	FL	904-249-1871	dickayf@aol.com
11	Mark-Lane Stamps	W.Haverstraw	NY	845-362-3330	RWS45@aol.com
12	Quality Stamps	Venice	FL	941-376-5689	qualitystamps@verizon.net
13	James F. Taff	Sacramento	CA	916-454-9007	None
14	Castle Rock Stamps	Miami	FL	786-340-8335	jorgecastillova@yahoo.com
15-16	FA Stamps	Shalimar	FL	850-651-2770	None
17	Michael	Titusville	FL	321-269-3377	cmikew@mindspring.com
18	EdKen	Tampa	FL	813-948-8755	elyons011@verizon.net
19	H & S Rogg	Port Richey	FL	727-848-7697	h.rogg@verizon.net
20	Jacksonville Stamp & Coin	Jacksonville	FL	904-388-5351	PDearing@coj.net
21	Labron Harris	Glen Echo	MD	301-229-9385	labronharr@aol.com
22	Collectors Exchange	Orlando	FL	407-620-0908	colex4stamps@cfl.rr.com
23	Blackjack Trading Company	Yorktown	VA	757-874-0279	chansel839@aol.com
24-25	The Stamp Explorer	Jacksonville	FL	904-396-9812	None
26	Stamp Center of Texas	Boerne	TX	210-240-4083	Klingsor88@hotmail.com
27	Stephen T. Taylor	Surbiton Surrey	England	011-4420-8390-9357	info@stephentaylor.co.uk
28	Mountainside Stamps, Coins & Currency	Mountainside	NJ	908-232-0539	tjacks@verizon.net



Booth	Name	City	State	Phone	E-mail
29	Michael Rogers, Inc.	Winter Park	FL	407-644-2290	michael@michaelrogersinc.com
30	Michael J. Stern	Ellenton	FL	941-896-5577	info@michaeljstern.com
31	Earl T. Reeder	Kissimmee	FL	407-847-5901	etreeder@cfl.rr.com
32	Queen City Coin & Stamp	LaFayette	GA	706-638-2941	qccoinstamp@windstream.net
33	Robert M. Sazama	Marion	IL	618-992-0607	bsazama@4siwi.com
34	The Stamp-Tique, Inc.	Shalimar	FL	850-651-3437	stamptique@earthlink.net
35	Douglas Weisz U.S. Covers	McMurray	PA	773-914-4332	weiszcovers@yahoo.com
36-37	M.T.O. Stamps	Bradenton	FL	941-993-0919	mto.stamps@gte.net
38	Newport Harbor Stamp Co.	Newport Beach	CA	800-722-1022	davidcobb@earthlink.net
39	Marshall's Stamps for Collectors	Bonita Springs	FL	239-691-1663	None
40	Stamps Unlimited of GA, Inc.	Atlanta	GA	404-688-9161	tonyroozen@yahoo.com
41	Browse House	Holly Hill	FL	386-672-1673	stamps@browsehouse.com
42-43	BEJCO of Florida, Inc.	Temple Terrace	FL	813-980-0734	amsel@verizon.net
44-45-46	New England Stamp	East Naples	FL	239-732-8000	newengstmp@aol.com
47-48	A&R Stamp	Orlando	FL	407-859-9109	pfettig151@aol.com
49	Joanne's Stamps	Marion	IL	618-992-0607	bsazama@4siwi.com
50	Rising Sun Stamps	Marshalls Creek	PA	570-421-6043	rising@ptd.net
51-52-53	SunCoast Stamp Company, Inc.	Sarasota	FL	941-921-9761	mail@suncoaststamp.com
54-55	Double J Stamps	Arlington Heights	IL	847-843-8700	Double J Stamps@yahoo.com
56	Martin Farber	Lady Lake	FL	352-753-4774	MFarberStamps@AOL.com
57-58	Court Street Stamp & Coin Shop	Clearwater	FL	727-442-5784	None
59-60	Roy's Stamps	St. Catharines Ontario	Canada	905-934-8377	roystamp@cogeco.ca
61	Norman Hinds, Jr. Philatelic	Wabasso	FL	772-589-3741	neh143@aol.com
62	Jacksonville Stamp & Coin D/D	Jacksonville	FL	904-388-5351	PDearing@coj.net
63	RKA Covers	Lafayette	IN	765-543-8274	RKCovers@yahoo.com

# EXHIBITION AREA



REST-  
ROOMS

USPS  
Society/Club Tables

Registration

LO  
ENTR

REA

Youth  
Area

51

50

49

48

47

27

28

38

39

40

24

25

35

36

37

21

22

32

33

34

18

19

29

30

31

46

45

44

43

42

41

BBY  
RANCE

Auction View Area

EVENING  
AUCTION  
& REST-  
ROOMS

# Events Listing

Date	Access	Event	Time
<b>Friday</b> <b>November 30, 2012</b>	Public	Welcome Ceremony	9:50am to 10:00am
	<b>Public</b>	<b>Show Opens</b>	<b>10:00am</b>
	Public	Youth Area opens	10:00am
	Public	Exhibits Open	All day
	Public	Bucket of Stamps  (Youth Area)  material permitting	All day
	Public	Show Cachet & Cancel  (Titanic)	All day
	<b>Public</b>	<b>Show Closes</b>	<b>6:00pm</b>
<b>Saturday</b> <b>Part I</b> <b>December 1, 2012</b>	Restricted	CSS BoD Meeting	9:00am
	<b>Public</b> <b>Special Event</b>	<b>First Day of Issue</b> <b>“Waves of Color” Ceremony</b> <b>USPS</b>	<b>9:00am to 9:45am</b>
	<b>Public</b>	<b>Show Opens</b>	<b>10:00am</b>
	Public	Youth Area opens	10:00am
	Public	CSS Annual Membership Meeting	11:00am to noon
	Public	Exhibits Open	All day
	Public	Bucket of Stamps  (Youth Area)  material permitting	All day

# Events Listing

Date	Access	Event	Time
<b>Saturday</b> <b>Part 2</b> <b>December 1, 2012</b>	Public	Show Cachet & Cancel (Titanic)	All day
	Public	Florida Postal History Society Membership Meeting	noon to 1:00pm
	Workshop AAPE Seminar	Open Forum on Exhibiting	1:00pm to 2:00pm
	Public	Judge's Critique	2:30pm to 4:00pm
	Judges & Exhibitors only	Awards Meet & Greet	4:00pm to 5:00pm
	<b>Public</b>	<b>Show Closes</b>	<b>5:00pm</b>
	Public	Auction Michael Rogers, Inc.	5:30pm
<b>Sunday</b> <b>December 2, 2012</b>	FSDA Dealers & Invited Guests Only	Dealers' Breakfast	8:00am to 9:30am
	<b>Public</b>	<b>Show Opens</b>	<b>10:00am</b>
	Public	Youth Area opens	10:00am
	Public	Exhibits Open	All day
	Public	Bucket of Stamps (Youth Area) material permitting	All day
	Public	Show Cachet & Cancel (Titanic)	All day
	Public	Grand Door Prize Drawing	2:30pm
	<b>Public</b>	<b>Show Closes</b>	<b>3:00pm</b>

## First Day of Issue “The Waves of Color”

For only the second time in the 59 year history of FLOREX, we have a First Day of Issue event at the show. At 9:00 am on Saturday, December 1st, the USPS will be presenting the four “Waves of Color” stamps to the public. These four high-denomination stamps are bright and colorful while being simple in design.

A slate of speakers will be on tap to introduce these stamps. The family of stamps will be available for purchase at the show along with the ability to obtain a First Day of Issue cancel.

Plans are for a very limited-edition cachet to be available for purchase. This cachet has been designed by a local graphic artist, Kathleen Grubbe, who will be available for a limited time on Saturday to sign her work.

This Waves of Color project is sponsored by the FSDA.

Special thanks are extended to Connie Totten-Oldham who is the Manager, Stamp Development, located at the USPS office in Washington D.C. and to George Shock, Jr., the Postmaster of the Winter Garden office, who is supplying valuable local support for this event.





Cachet & 45¢ Stamp for the Titanic 100 year Anniversary.  
Available for purchase at FLOREX 2012, canceled each  
day of the show. Produced by the CFSC.



SEE US IN BOOTH 47 & 48

## **A & R Stamps Ann & Phil Fettig**

P.O. Box 568334 Orlando, FL 32856

**U.S. \* World Wide \* Stamps \* Box Lots  
Airpost, Naval & First Day Covers**

A & R is not "Going out of Business" but rather reducing the number of shows we attend to 5 by 2014. In order to reduce stock, look for the following:

### **FLOREX SHOW SPECIALS**

- \* **Thousands of World Wide sets priced at \$1 regardless of Catalog Value**
- \* **Thousands of covers priced at \$1 or less**
- \* **Philatelic Library being broken up & sold**

## Thanks for Everything.....

- A show can't be a show without the cooperation and support of the dealers who come from far and wide to sit on very hard chairs for three days – thank you!
- To all the volunteers from the Central Florida Stamp Club (CFSC), your tireless hours of devotion and dedication to making sure the show runs smoothly are very much appreciated – thank you!
- To MRI, FLOREX is deeply grateful for your monetary support of the meeting room venues – thank you!
- To Robert Fisher, Exhibit Chairman - it has gotten easier – thank you!
- To Robert & Ann Dowrick, your dedication and time have made my life a lot easier in ways that I can not even begin to detail -- a hearty thank you is in order!
- To everyone else from the FSDA, CFSC, and APS who I have not named specifically – your help in making this whole thing possible is greatly appreciated – thank you!

SEE US IN BOOTH 28

### BUYING AND SELLING WORLDWIDE STAMPS AND COVERS AT OUR BOOTH **MOUNTAINSIDE STAMPS**

Post Office Box 1116, Mountainside, NJ 07092  
TEL: 908.232.0539 <-----> EMAIL: [tjacks@verizon.net](mailto:tjacks@verizon.net)

**United States** -- Single Stamps -- used and unused, Plate Blocks, Booklet Panes, and Booklets, BoB, Ducks, Revenues, Sheets, Stationery, FDC's, Possessions, and United Nations.

**Canada** -- Singles, Booklets, Plate Blocks, and Revenues.

**British Commonwealth** -- ALL Areas -- Great Britain, Australia, New Zealand and Bermuda.

**Western Europe** -- Single Stamps and Booklets from Germany, France, Italy, Vatican, Greece, Switzerland, Liechtenstein, Belgium, Netherlands, Luxembourg, Portugal, Spain and Scandinavia.

**Eastern Europe** -- Albania, Poland, and Russia.

**Asia-Japan, China, Hong Kong, Macao, Malaya.**

PLEASE OFFER QUALITY PHILATELIC MATERIAL FOR SALE.

**For more information**  
**[www.MountainSideStamps.com](http://www.MountainSideStamps.com)**

## FRAMING OF CENTRAL FLORIDA, INC.

1820 N. Orange Ave., Orlando, FL 32804  
(between New Hampshire and Princeton)

407-894-8644

Custom Framing

email: [framingcentralfl@aol.com](mailto:framingcentralfl@aol.com) • [www.framingofcentralflorida.com](http://www.framingofcentralflorida.com)

Monday-Friday 9:30-5:30 • Saturday 10:00-3:00

*"You Name It We Frame It"*

Mike L. VanDerLeest

Rudy J. Wright

SEE US IN  
BOOTH  
1

## The Stamp Professor

US and Worldwide Stamps Bought, Sold & Appraised

**John A. Hunter**

St. Augustine, Florida 32080

by appointment only  
904.471.1549  
904.315.5482

[TheStampProf@gmail.com](mailto:TheStampProf@gmail.com)

## Buy -- Sell -- Appraise

UNITED STATES - FOREIGN - COLLECTIONS - ACCUMULATIONS

***Ed Petrik***

P.O. Box 512  
Hernando, FL 34442

PHONE: 352.726.2568

E-mail: [EdPetrikStamps@tampabay.rr.com](mailto:EdPetrikStamps@tampabay.rr.com)

Member of: ANA, APS, FSDA

SEE US IN  
BOOTH  
9

SEE US IN  
BOOTH  
57 & 58



British Commonwealth -- Asia -- United States

***F.S.D.A F.U.N. A.P.S***

***Court Street Stamps and Coins***

***1250 Court Street Clearwater, Florida 33756***  
***Phone 727 | 442-5784***

**Carl Kish**  
**Owner**

# NEW ENGLAND STAMP

## Super Sale!



ASDA, APS  
FSDA, AFDCS

EST. 1893



**20% OFF of our  
ENTIRE stock of US  
and worldwide stamps  
and covers.\***

**You can see us at  
booth 44, 45 & 46**

**\* except \$1 covers**

**Stop by and see our completely new stock  
of individually priced World-wide Covers!!**

On the web at [www.NewEnglandStamp.com](http://www.NewEnglandStamp.com)

4987 Tamiami Trail East  
Village Falls Professional Center  
Naples, Florida 34113

Phone (239) 732-8000  
FAX (239) 732-7701

eBay ID gary.nes

Robert J. Hausin

Gary A. Hausin

## CLASSIC STAMP & COVER CO.

### Philatelic Sales



- WORLD POSTAL HISTORY
- STAMP AND COVERS
- LOTS
- APPRAISAL-PURCHASE
- CONSULTATIONS
- SPECIALIZED AREAS

P.O. BOX 330635  
ATLANTIC BEACH, FL 32233  
TEL. (904) 249-1871

APS, GPS, FSDA

SEE US IN  
BOOTH  
10

SEE US IN  
BOOTH  
18



## EDKEN

*That Something Special!*  
First Day Covers & Stamps

Ed Lyons

P.O. Box 271401

Tampa, Florida 33688-1401  
Phone: 813.948.8755

EdKen11@verizon.net

FSDA • APS



(727) 848-7697  
C# (727) 364-6897

## H & S ROGG

P.O. BOX 1076  
PORT RICHEY, FL 34673-1076  
Email: h.rogg@verizon.net

STAMPS  
APPRAISALS

COINS  
SUPPLIES

SEE US IN  
BOOTH  
19

SEE US IN  
BOOTH  
56

UNITED STATES  
FRANCE & COLONIES  
SCANDINAVIA  
WORLDWIDE



## MARTIN FARBER

P.O. BOX 579  
LADY LAKE, FL 32158  
(352) 753 4774  
MFarberStamps@aol.com

WE BUY AND  
SELL COLLECTIONS

SEE US IN  
BOOTH  
17

## *United States Stamps*

US, Mint, Used, Postal Cards, Postal Stationery,  
Florida Postal History, Space Covers and More

BUY - SELL - TRADE

---

### Michael

Box 301  
Titusville, FL 32781  
Phone 321.269.3377

Email: [cmikew@mindspring.com](mailto:cmikew@mindspring.com)

Stamps Bought & Sold - Wholesale & Retail



**Earl T. Reeder**  
P.O. Box 421850

Kissimmee, FL 34742-1850

Telephone: 407.873.2008

email: [etreeder@cfl.rr.com](mailto:etreeder@cfl.rr.com)



*serving the collector since 1978 Est. 1914*

SEE US IN  
BOOTH  
31

SEE US IN  
BOOTH  
36 & 37



**M.T.O. STAMPS**

U.S. Stamps bought and sold  
MINT USED

SY & LUCY BRICKER

(941) 993-0919  
email: [mto.stamps@gte.net](mailto:mto.stamps@gte.net)

P.O. Box 20463  
Bradenton, FL 34204

Come see our large selection of material:

- PNC strips of 5
- Many used PNC # singles
- Revenues and back-of-book
- Early to modern used and unused U.S.



**Frank  
Bachenheimer**  
*Satisfying collectors like YOU since 1975*

U.S. STAMPS - REVENUES - POSSESSIONS

Box 230 GLENVIEW, IL 60025  
(847) 480-1880 or FAX 480-7461  
Email to: FrankB@AStampDealer4U.com



Visit us at [www.AStampDealer4U.com](http://www.AStampDealer4U.com)

APPRAISALS - WANT LIST - BUYING



SEE US IN  
BOOTH  
3

SEE US IN  
BOOTH  
39



**MARSHALL'S**  
**STAMPS FOR COLLECTORS**

Established: 1991



*Professional Philatelist*

BUY - SELL - TRADE

US & World Wide  
Stamps & Covers  
Postal History & Stationery

**MARSHALL T. KUEHN**  
239.691.1663 (cell)



**James F. Taff**

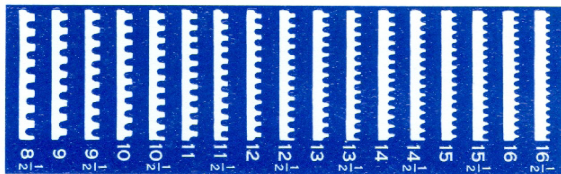
P.O.Box 19549  
Sacramento, CA 95819  
Office: (916) 454-9007  
Cell: (916) 709-0412  
Fax: (916) 454-9009



Confederate States, German Areas,  
United States (Especially B.O.B.), British Colonies,  
French Colonies, Portuguese Colonies, Italian Colonies,  
Worldwide

SEE US IN  
BOOTH  
13

SEE US IN  
BOOTH  
40



STAMPS UNLIMITED OF GA., INC.

TONY ROOZEN

100 PEACHTREE ST. SUITE 1460  
ATLANTA, GEORGIA 30303 - PHONE (404) 688-9161  
HOURS: (WHEN OPEN) MON-FRI 11-5, SAT 10-1  
EMAIL: [tonyroozen@yahoo.com](mailto:tonyroozen@yahoo.com)  
WEBSITE: [stampsunlimitedofga.com](http://stampsunlimitedofga.com)

## Exhibitor Prospectus -- FLOREX 2012, November 30, December 1 & 2

1. This exhibition is a WSP show open to all collectors regardless of philatelic affiliation who conform to the rules in this prospectus. Exhibits at time of entry that have won the APS Champion of Champions, an international grand prix, or three international large gold medals are ineligible. Youth exhibitors must not have reached their 22nd birthday. All material exhibited must be owned by the person(s) whose name(s) appears on the official entry form. Exhibits with dual ownership are not eligible unless the two individuals are husband and wife or parent and child. Exhibitors' names will be used in the program, in the palmares, in press releases after the show, and in connection with the awards. To remain anonymous, exhibitors must advise the exhibit committee and furnish a pseudonym.
2. Exhibits that have been purchased intact may not be exhibited for a period of two years from the date of purchase unless the exhibit is substantially altered by the addition of new material or new text. The Committee on the Accreditation of National Exhibitions and Judges will determine whether or not a particular exhibit is affected by this regulation.
3. **An entry form for each exhibit, along with the entry fee payable by check (made out to FSDA), must be mailed to: FLOREX, Robert J. Fisher, 621 Glen Grove Lane, Edgewood, FL, 32839 -- to arrive by October 1, 2012.** At most one multi-frame and one single-frame exhibits may be entered in the open competition by any one exhibitor. Exhibits entered in the Single Frame C of C do not count towards this limit (see 4 below). All fees paid will be refunded in case of non-acceptance but otherwise are non-refundable except as noted in #12 below.
4. Exhibits may be entered in any one of four classes: General, Single Frame, Youth, and Noncompetitive. The General Class is composed of the Postal, Revenue, Thematic, Display, Single Frame, and Youth. The Single Frame Class is composed of the Postal, Cinderella, Display, Illustrated, and Thematic. The Youth Class is composed of the Postal and Thematic. The Noncompetitive Class stands on it's own.
5. There will be up to 200 total frames at the show. Noncompetitive exhibits will only be accepted if they add significantly to the show. Examples include famous or infrequently seen rarities, innovative exhibits including those that will not fit in standard frames, and exhibits related to the theme or location of the show.
6. Exhibits are generally accepted in the order of receipt of completed entry forms and payment, however, FLOREX reserves the right to refuse any exhibit. Criteria that may be considered in the acceptance of exhibits include APS member status, membership in Societies participating in the show, service on the local committee or as a volunteer, planned attendance of the show and or awards functions, submission of title or synopsis pages, and whether or not the exhibit has been previously shown at FLOREX 2011.
7. A jury of at least five APS-accredited judges will be appointed by the Exhibition Committee to judge the exhibits. The judges will judge each exhibit on its own merit set forth in the 6th edition of the APS Manual of Philatelic Judging, which is available for purchase from the APS. Judging will be on an open basis. Exhibitors should familiarize themselves with the rules in order to achieve the highest award. Decisions of the judges are final. Other special and society awards will also be given to deserving exhibits at the discretion of the jury. All awards will be announced at an awards ceremony the afternoon of Saturday, December 1, 2012.
8. The following awards will be given to each qualified exhibit, based on the individual

## Exhibitor Prospectus -- FLOREX 2012, November 30, December 1 & 2

merit of that exhibit: Gold, Vermeil, Silver, Silver Bronze, Bronze or Certificate. There is no limit on the number of any one award that can be given in the exhibition. Grand and Reserve Grand awards will be given to the top General Class exhibits. Awards will also be given to the best Single Frame and the best Youth Class exhibit.

9. General, Single Frame, and Youth exhibits will be judged based on four levels of awards. Exhibits in these classes will receive written feedback. A Grand Award and a Reserve Grand Award will be given to the best exhibits in the General and Single Frame class. Special awards may be given to the best exhibit in each division with five or more entries. Additional Society and Special awards may be presented. The Grand Award winner is expected to enter the winning exhibit in the next World Series of Philately, competing for the Champion of Champions award.
10. Exhibitors who have an exhibiting age of 21 years of age or less on January 1, 2012, may enter the Youth Class. Frames for youth exhibits are offered at \$1.00 per frame.
11. Adult exhibits have a one-frame minimum and a ten-frame maximum. (Jenkins/Ameripex type frames, each holding four rows of four 8 1/2 by 11 inch pages will be used.) If you wish to deviate from the standard frame layout (4 rows of 4 letter size pages) you must get the approval of the Exhibit Chair prior to submission of your application (call **Robert J. Fisher 407.855.7202**). The occasional use of double size or double row pages to display larger items is approved. Each album page must be inserted into a transparent protective sleeve, envelope or covering and should bear progressive numbers, preferably on the reverse side, to indicate the order in which the pages are to be mounted, preferably closed on three sides. The FLOREX Exhibit Chair should be consulted in advance regarding any exhibits with large or odd-sized pages that will not be mounted and dismounted by the owner or a designated agent.
12. The official entry form must be used. It has space for a description of the exhibit of no more than 25 words for inclusion in the program. The title and description on the Official Entry Form will be used in the exhibition program. Do not exceed 25 words in the description. Please check your Official Entry Form **carefully** before mailing it. If the frames are over subscribed, only one exhibit may be accepted. Each exhibitor must also submit seven photocopies of the title page and seven copies of a one or two page summary synopsis outline of the exhibit. This material may be sent at the time of application or up to October 1, 2012. The title page and synopsis for your exhibit will be distributed to the jury in advance of the show to assist them in preparing to evaluate your exhibit. A collector may submit more than one exhibit application, but no more than two exhibits will be accepted from the same person. Separate entry forms must be used for each exhibit. If the frames are over subscribed, only one exhibit may be accepted. The exhibit entry is \$10.00 per frame. However the minimum fee for each exhibit is \$25.00. **The charge on the first three frames from any youth exhibitor is \$1.00 each.** The entry fee must be paid in full when you submit your official Entry Form, by check made payable to: **FSDA. Any entry form that is submitted and postmarked before June 1, 2012 is entitled to a 10% discount on fees.** The deadline for entries is October 1, 2012. Early application is important because the Exhibition Committee may close entries without further notice when frames are filled. The Exhibition Committee can at its discretion, reject any exhibit for any reason. If the exhibit is rejected, the entry fee will be refunded in full. All exhibitors will be notified whether their exhibit has been accepted ASAP after October 1, 2012. Entry fees will not be refunded for exhibits withdrawn after October 1, 2012, or not delivered to the Exhibition. In the event that an exhibit is rejected for violating this requirement, all entry fees, less an administrative fee of \$15, will be refunded. Withdrawal or failure to present an exhibit after accepted will result in forfeiture of any entry fee paid.

## Exhibitor Prospectus -- FLOREX 2012, November 30, December 1 & 2

13. Personally delivered exhibits will be received by the Exhibition Committee before the show between the hours of 4:00 pm and 6:00 pm on Thursday, November, 29, 2012.
14. **No Exhibit may be removed prior to the closing of the show at 3:00 pm Sunday, December 2, 2012.** The exhibit may be removed thereafter only when signed for by the exhibitor or duly authorized representative and when checked out and released by the Exhibition Committee. The removal of exhibits will be carefully supervised by approved staff and will not be rushed, so that safety and security are ensured.
15. Exhibits must be sent prepaid and with return postage or payment. They will be returned promptly after the closing of the show by the method requested by the owner. If no method is specified, your exhibit will be returned via Express Mail at a minimum fee of \$18.00 per 16 pages or actual cost. We highly recommend the use of fully insured Express mail. **Please package your exhibit for shipping so that the packaging materials can be reused for return.**
16. **Exhibitors must provide their own insurance.** All reasonable care will be taken to ensure the safety of the exhibits, including 24-hour professional security guards. The exhibit is entered at the risk of the exhibitor. No responsibility or liability shall be attached to The Florida Stamp Dealer Association, FLOREX 2012, its Committee members, sponsoring societies, or any of their employees, officers, volunteers or representatives for any damage or loss for any cause or reason.
17. The Exhibition Committee will have complete discretion in matters that may arise concerning the Exhibition and not provided for in this prospectus. I agree that the decision of the judges shall be final, and hereby release and agree to hold harmless the judges and the American Philatelic Society, its officers, directors, employees, and representatives from any damages, including by not limited to damages to my reputation or that of my exhibit, suffered or incurred as a result of the judging. Signing of the entry form denotes acceptance of all conditions set forth herein. Any and all disputes are the sole responsibility of the Exhibits Chair to resolve.

[v2.0 – 06.22.12]

### FLOREX 2012 Judges

APS-accredited judging will be chaired by James Graue of WA & FL.

Rounding out the remaining four jury positions

Elizabeth M. Hisey (FL)

Janet Klug (OH)

Anthony F. Dewey (CT)

Eliot Landau (IL)

The Judges' Critique is scheduled for 2:30 pm Saturday, December 1, 2012. The Awards Presentation and reception for exhibitors and judges will begin at 4:00 pm in the meeting area.

G  
O  
L  
D

2.00  
inch



V  
E  
R  
M  
E  
I  
L

These medals, represent the beginning of a new era for **FLOREX**, first awarded in 2008 when we reclaimed status as a WSP show.

**FLOREX 2012** would like to thank all those exhibitors who have participated in shows of years past ---- and all those to come!



Silver



Silver-Bronze



Bronze

1.75 inch  
medals

F  
L  
O  
R  
E  
X  
S  
T  
A  
M  
P  
S  
H  
O  
W

## Future FLOREX Dates

2013 December 6, 7 & 8

2014 December 5, 6 & 7

2015 December 4, 5 & 6

2016 December 2, 3 & 4

2017 December 1, 2 & 3

.COM

2018 November 30, December 1 & 2

# Exhibit Frame Information

Frame Assignment	Exhibitor	Subject
1 - 8	Phillip J. Stager	COCONUTS - A study of the coconut palm ( <i>Cocos nucifera</i> ) and its relation to man and the environment
9	George L. Pegram	CONFEDERATE STATES OF AMERICA Postmaster's Provisionals, New Orleans, Louisiana, Adhesives, Their Varieties & Cancels.
10	Herbert Kucera	Germany - Famous Sites and Objects
11 - 16	Christine Sanders	The Christmas Florida Post Office: The Tucker Legacy
17 - 20	Raymond H. Murphy	Keeping the Lid On! Jamaican Censorship in WW II
21-26	James P. Edmunds	U. S. Battleships
27 - 30	Paul B. Spiwak	Zemstvo (Rural) Stamps Used In Ukraine
31 - 38	Alfredo Frohlich	United States of Colombia 1868 - 1881
39 [CSS]	David Lu	The International Aerogrammes of China (1948 - 1949)
40 [CSS]	Tom Massa	Chinese Ki-Hei "Restricted Use" Overprints of 1927 - 1929
41 [CSS]	H. James Maxwell	The 1912 Chinese Overprints
42 – 50 [CSS]	William P. Winter	The China Martyrs Stamps 1932 to 1949
51 – 60 [CSS]	Jerry H. Miller	German Intervention in China
61 – 70 [CSS]	H. James Maxwell	Rates During the Post-War Chinese National Currency Era
71 – 80 [CSS]	Hugh Lawrence	Postal Rates During the Gold Yuan Era: The Chinese Hyperinflation of 1948 - 1949
81 - 86	Stephen L. Suffet	Rates and Usages of the US One Cent Presidential Series stamp of 1938-1958
87 - 90	Charles J. Lablonde	The Postal History of Swiss WW II Cards
91 – 96 [NCE]	Robert G. Rufe & Robert H. Feldman	U.S. Special Handling 1925 - 1959: The Stamps and the Service
97	Kathryn Johnson	Mauritius Revenues 1858 - 1904
98 - 100	Dr. Michael Dixon	GB WWII Prisoner-of-War Air Mail Postal Stationery Use
101 - 107	George W. Bowman	The New Zealand Mt. Cook Half-Penny Design of 1898
108	James P. Edmunds	U.S. Armored Cruisers
109	Larry Lyons	The Rise and Fall of The U.S. City Despatch Post August 16, 1842 - November 28, 1846
110	Dawn R. Hamman	Manatees and Dugongs: The Story of Their Struggle to Survive
111 – 115 [NCE]	Robert Hisey	Zimbabwe Inflation 1980 to 2009
116 - 120	Kathryn Johnson	The Evolution of Slave Island, Ceylon and its Postmarks
121 – 130 [CoH]	Andrew McFarlane	First Days of the 1929 George Rogers Clark Commemorative
131 - 140	Phillip J. Stager	Mine to Mill - Part One
141 - 145	Robert S. Boyd	Pre-Civil War Postage Rates To the German States
146 - 150	Darrel Ertzberger	British Honduras Postal Stationery
151 - 158	Alfredo Frohlich	Colombia First Perforated Issue, 1883
159 - 160	Jerry Eller	Postal Markings of the Canal Zone
161 - 170	Robert W. Collins	The Korean War - Military Postal History 1950-1956
171 – 180 [CoH]	Arnold Selengut	150 Years of US Precancels
181	Patricia Moeser	Airplane Flying Over Marseille
182	George W. Bowman	Arthur Banta's Bicycle Post of 1894 and His Memorial Rerun of 1935
183	Josh Furman	U. S. Precanceled Postal Cards

NCE - None Competitive    CoH - Court of Honor    CSS - China Stamp Society



## Exhibit Award Listing

- Paul Chang Chinese Postal History Award
- CSS Scholarship Award
- CSS Best Exhibit of China Award
- CSS First Time Exhibitor Award
- CSS Chia Nan Chapter Award
- James R. Lee Memorial Award
- CSS Republic of China (Taiwan) Chapter Award
- APS Medal of Excellence Pre 1900
- APS Medal of Excellence 1900 - 1940
- APS Medal of Excellence 1940 - 1980
- APS Medal of Excellence Post 1980
- APS Research Medal
- AAPE Creativity in Philatelic Exhibiting Pin
- AAPE Gold Award of Honor
- AAPE Novice Award
- AAPE Award of Excellence Title Page
- Women Exhibitors Sterling Achievement Award
- Postal History Society Award
- United States Stamp Society
- Statue of Freedom Award
- Lighthouse Stamp Society Harbour Lights Award
- German Colonies Collectors Group
- Col W.E. Davis Award
- Rossica Award
- American Philatelic Congress Award
- Grand Award
- Reserve Grand Award
- Single Frame Grand Award
- Peoples Choice Award

**FLOREX would like to congratulate the top winners from 2011**

Grand Award -- **Santiago Cruz** for his exhibit: *Columbia -  
The Department of Antioquia 1886-1904*

Reserve Grand Award -- **Nicholas M. Kirke** for his exhibit:  
*The Progression of the New York Foreign  
Mail Cancellations 1870-1878*



## FloridaStampShows.com

The source for all show  
related information for the  
state of Florida



### NORMAN C. HINDS, JR. PHILATELICS



P.O. Box 700273  
Wabasso, FL 32970

Phone: 772-589-3741  
Email: nch143@aol.com

NORMAN C. HINDS, JR.  
eBay store: stores.ebay.com/  
Norman-Hinds-Philatelics  
Postage Stamps  
Bought and Sold  
Member FSDA, USPCS, GPS, GCCG



APS # 083032

SEE US IN  
BOOTH  
61

SEE US IN  
BOOTHS  
24 & 25



Pat Campbell  
APS, FSDA, SDAG, NSDA

### THE STAMP EXPLORER

Buy • Sell • Trade • U.S. • British • Worldwide

1232 Nicholson Rd.  
Jacksonville, Florida 32207  
(904) 396-9812



### *The Stamp-Tique, Inc.*

Buying & Selling  
US, Canada, Hong Kong, Australia, NZ

Glenn & Rowena Hanle

17 Lake Lorraine Circle  
Shalimar, FL 32579-1617  
Phone: 850-651-3437 FAX: 850-651-3406  
Email: stamptique@earthlink.net  
Website: www.stamptique.com  
Member: APS, ASDA, USPCS, USSS, FSDA, SDAG

SEE US IN  
BOOTH  
34

**The Florida Precancel Club**  
Presents the Southeast's Largest  
**Precancel Bourse and Perfans Exchange**  
February 6 thru 9, 2013



Holiday Inn Express & Suites  
4750 North Dale Mabry Highway  
Tampa FL 33614-6509  
For hotel reservations call 813.877.6061 and  
Request "Florida Precancel" rate of \$89.99.

Additional meeting information from  
Jerry Hejduk at 352.326.2117 or write/email  
PO Box 490450, Leesburg FL 34749-0450  
[flprepers@comcast.net](mailto:flprepers@comcast.net)

SEE US IN BOOTHS 42 & 43



**BEJJCO**

**of Florida, Inc.**

Arnold H. Selengut



**U.S. & WORLDWIDE**

*Stamps and Covers*

*FDCs, Flights, U.S. & Foreign Postal History*

**All Continents, All Countries**

From 20¢ to \$100s, Mint and Used

*Let us help you fill those empty spaces.*

**See us at a Stamp Show, or send us your Want List.**

E-mail: [arnsel@verizon.net](mailto:arnsel@verizon.net)

P. O. Box 16681 Temple Terrace, FL 33687-6681 (813) 980-0734

# Welcome to Michael Rogers Public Auction #130

Being held in conjunction with

FLOREX 2012 -- Saturday 5:30 pm

We welcome the China Stamp Society to FLOREX with the renowned Richard Canman Treaty Ports collection — comprehensive 19th century with a great many Large Dragons, Red Revenues and Dowagers. Many collections/box lots. Taiwan/PRC sets and S/S. Taiwan in quantity, 260 China lots. A bonanza of material fresh to the market.

Worldwide has great US postal history with 10 lots of #1 on cover from a recent find; also stampless covers sorted into lots. A large postal history collection broken down by country with good Ascension, Egypt with Ship Mail, Official Mail; France and Colonies 1804-1876; German States and Germany with exceptional ranges of Inflation Era covers; wide range of Zeppelin Flight covers individually lotted; Guatemala collection of 350+ Air Mail covers offered intact; Italian States stampless; much, much more. Individual country collections galore. As always at FLOREX we have a very large range of Large Lots to round off the Auction: 57 lots including accumulations, exceptionally beautiful topical collections, also First Flights, Balloons, Rocket Mail, way too much to describe. We are also offering the first part of a previously unknown archive relating to the design and production of the first issues of Bhutan. The two star items are complete sheets of the unissued 33ch. Anti-Malaria 'Buddha' stamp, one in the issued colors and another printed in different shades. The Kingdom forbade the issuance of the stamps when they found out the image was not Buddha but their most revered saint, Guru Rinpoche, who could not be depicted on a stamp advocating the taking of life. No intact sheets were known until now.

There is so much on offer here, if you're thinking of starting a new area this is your opportunity!

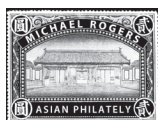
**Best of luck with your bidding.**

MICHAEL ROGERS INC. PRESENTS  
**PUBLIC AUCTION 130 AT FLOREX**  
 Saturday, December 1st ■ 5:30 p.m.



WELCOME TO FLOREX. We are pleased to have been named as the Official Auctioneer for the FLOREX Stamp Show. For this special event we will be offering over 700 lots, which will feature many delightful stamps of the United States, Worldwide and China. Highlights include a new find of ten 1847 5¢ Franklin covers, the Richard Canman Treaty Port collections and outstanding Zeppelin and Airpost Flights. Some lovely Bhutan archival material — essays and unissued items. Wide ranging China: 300 lots of Classics to PRC in addition to Worldwide sets, singles and postal history. And of course over 190 worldwide collections and box lots. Auction preview viewing Friday and Saturday November 30 – December 1 from 10:00 AM to 5:00 PM. Catalogues are available at our booth or can be viewed online at our website: ([www.michaelrogersinc.com](http://www.michaelrogersinc.com))

## Michael Rogers Inc.



415 South Orlando Ave., Suite 4-1

Winter Park, FL 32789-3683

Office: 407-644-2290

Toll-free US & Canada: 800-843-3751



*Consignments for upcoming auctions are invited*



# BLACKJACK TRADING COMPANY

We are here to buy regardless of the size of your estate.  
We will buy ALL your stamps.

Please contact Chuck Hanselmann at:

757.874.0279

- or -

chansel839@aol.com

SEE US IN  
BOOTH  
23

