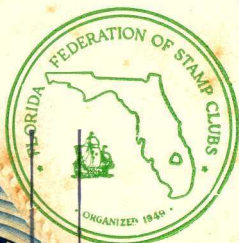


Florex
#11 1960

11th ANNUAL



FLOREX 1960

Program and Catalog

November 4-7

WOMAN'S
CLUB

LEESBURG
FLORIDA

LAKE
COUNTY
PHILATELIC
SOCIETY

Lake County Philatelic Society

extends its hearty welcome to all those attending

FLOREX 1960

As a young club (one year old), we welcomed you here in 1955 for FLOREX. We are thrilled and honored to have you again as our guests. Please make yourself right at home. We meet each second and fourth Tuesday throughout the county — you are most welcome to attend.

LCPS Officers

Howard "cracked plate" Poppenger	President
Betty "Inverted Center" Bell	Vice-President
Don "late fee" Axtell	Treasurer
Clarence "overprinted" Clinton	Secretary

FLOREX Committee

Tom "tete beche" Hanson	General Chairman
General Richard "surcharged" Marshall	Associate Chairman*
Captain Ray "watermarked" Frankforther	Exhibition
D. C. "rouletted" Axwheel	Treasurer
Fred "typographed" Stivender	Program
Marie "special printing" Kyle	Publicity
Emmett "flat plate" Peter	Anonymous
Paul "one shilling" Reed	Tax Collector
Sandy "double impression" Poly	Party Girl
George "Paid" Linn	Auction**

* on patriotic cover, of course

** but we ain't having one

A Message from Our President . . .



Edith Delle Shollenberger

- P** P is for Perfins, Proofs and Precancels
- R** R is for Reprints, Rouletted in Red
- E** E is for Exhibitors, Essays and Errors
- F** F is for FLOREX — the Fine, Fun-loving
Florida Filatelists
- A** Always a welcome Awaits All who Arrive
- C** Collectors and Tarbuckets with Cancellations
and Covers are
- E** Especially welcomed in Leesburg this year.

Edith Delle Shollenberger
President

St. Petersburg Stamp Club

is happy to extend

Best Wishes and Congratulations

to the

Lake County Philatelic Society

on the occasion of

FLOREX 1960



"It's not the guns, nor armament,
nor money that you pay,
But the close co-operation that makes
us win the day;
It's not the individual,
nor the army as a whole,
But the everlastin' team work
of every bloomin' soul."

—*Kipling*

Let's pull together for the Federation.

Florida Federation of Stamp Clubs

OFFICERS

President

Edith

Delle

Shollenberger

Perf. 217
Pigeon Blood Pink

Vice President

James F. Carlin

Perf. 145, Prussian Green

Secretary - Treasurer

Frank A. Berger

Perf. 17 $\frac{3}{4}$, Type IV, Indigo

Regional Vice President

South

Joseph M.

Miley

Perf. 350
ultramarine

South - Central

Carolyn D.

Stephenson

Perf. 32 x 36
lilac rose

Central

Richard J.

Marshall

square cut
olive drab

West Coast

Robert W.

Pitt

Lithographed
Type XIII, bright

North - East

Doris

Hurnis

Perf. 36-24-38
Type MG, carmine rose

The members of the

Daytona Beach Philatelic Society

look forward to another exciting

FLOREX!

in Leesburg, and welcome the opportunity
to renew friendships with
all the members of the Florida Federation.

We meet in the Louver Room,
second floor
First Federal Savings and Loan Association
501 North Grandview Avenue

each first and third
Wednesday at 7:30 P. M.

PROGRAM

THURSDAY, NOVEMBER 3

1:00 P.M. to 6:00 P.M. — Setting up of Exhibition.
Woman's Club

8:00 P.M. — Judging Begins.

9:00-10:00 P.M. — Coffee Party — Women's Club.

FRIDAY, NOVEMBER 4

9:00 A.M. — Exhibition and Dealers' Display open.

FLOREX Postoffice opens. Please enjoy the exhibits, visit the Bourse, make new friends renew old friendships. Women's Club.

5:00 P.M. — FLOREX Postoffice closes.

10:00 P.M. — Exhibition and Dealers' Bourse close.

SATURDAY, NOVEMBER 5

9:00 A.M. — Exhibition and Dealers' Display open.

10:00 A.M. — Annual Meeting of the Executive Committee of The Florida Federation of Stamp Clubs; Edith Delle Shollenberger, presiding.

Leesburg Community Building.

2:30 P.M. — Second Session of the Executive Committee Meeting, if necessary.

7:00 P.M. — 11th Annual Banquet — Leesburg Community Building Dining Hall.

Speaker: Francis J. McCall, Associate Curator, Division of Philately and Postal History, Smithsonian Institution.

Topic: "The National Postage Stamp Collection in the new Museum of History and Technology."

SUNDAY, NOVEMBER 6

9:00 A.M. — Award Breakfast, Leesburg Community Building.

10:00 A.M. — Exhibition and Dealers' Display open.

2:00 P.M. — Exhibition and Dealers' Display close.

ROLL CALL
MEMBER CLUBS

Florida Federation of Stamp Clubs

Year 1960	Type Issue	Description	Mint	Used
1	A 1	Central Florida Stamp Club, nicely typographed	.10	.02
2	A 2	Daytona Beach Philatelic Society, Watermarked, Elephant's Head a. on cover	.25	.16
3	A 3	Ft. Lauderdale Stamp Club, Bright, but not gaudy	1.00	2.00
4	A 4	Jacksonville Stamp Collectors Club, Perforated, but usable	.10	3.98
5	A 5	Lake County Philatelic Society, Exhibition issue	.02	.02
6	A 6	Manatee County Stamp Club, issued to commemorate all of the late manatees	.14	.13
7	A 7	Collectors Club of Miami Beach, strictly a block of four	.04	.04
8	A 8	Miami Stamp Club, easily identified by aquamarine water with carmine-red tourists	1,000,000.00	.01
9	A 9	Indian River Stamp Club, Pow-wow's twice a month	9p	2a
10	A 10	Orlando Stamp Collectors Club, usually found slightly cancelled, but good specimens	.25	.15
11	A 11	Palm Beach Stamp Club, of great value, but reprints exist	.39	.25
12	A 12	Ridge Stamp Club, Border types, usually found printed on both sides	rare	rare
13	A 13	St. Petersburg Stamp Club, Home of the reissues and the overprinted	1.29	.39
14	A 14	Sarasota Philatelic Society, here courtesy of "Donna"	1.00	1.00
15	A 15	Sebring Stamp Club, not for sale	-----	-----
16	A 16	University Stamp Club. Caution, Gum usually soluble in salt water	.36	.63
17	A 17	Zephyr Hills Stamp Club, known to exist perforated vertically and imperforate horizontally, unless issued in coils	.19	.19
Associate Members				
18	A 18	Central Florida Chapter No. 5, A. S. D. A. — the only minority group in the United States today known not to have a commemorative stamp issued for them	.10	to 1.00
19	A 19	Florida Precancel Club — Cancelled, precancelled, but not reissued	-----	-----
20	A 20	Florida Chapter Confederate Stamp Alliance — each gutter block guaranteed to contain hominey grits	9.98	9.97

Lakeland and Winter Haven collectors meet at
RIDGE STAMP CLUB - LAKE LAND
2nd and 4th Tuesdays
All Others Welcome

FRIENDS OF FLOREX

Edith Delle Shollenberger
Howard Poppenger
Tom Hanson
J. H. Shollenberger
George Linn
W. Noyes Baker
Miriam Whitney
Richard Abrahams
Marie B. Kyle
Betty Bell
Fred Stivender
Sandy Poly
General Richard J. Marshall
Frank Mintern
Clarence Clinton
Andrew Miller
Don Axtell

Compliments
MANATEE COUNTY STAMP CLUB
Meets 2nd and 4th Tuesdays, Palmetto Library
Secretary G. W. Edmonds, Telephone 6-6277

Don't Forget the Gang at the

Hi Ho Hobby House

709 North Boulevard, West

Leesburg, Florida

Betty, Sandy, and Fred

The Exhibit

SECTION A — UNITED STATES AND POSSESSIONS — CONFEDERATE STATES

Frame No.

1-15

gold

George Linn, Howey, Florida

U. S. 3 cent 1861, Essays, Trial colors cancels, Patriotics, Railroad, Military, Steamship and all other uses of this stamp.

16-23

Richard L. Traut, Cincinnati, Ohio

Postal Issues of Hawaii.

24-33

swed

C. O. Anderson, St. Petersburg, Florida

Specialized Collection of Guam and Guam guard mail.

34-39

gold

Henry Spelman III, West Palm Beach, Florida

Florida, Confederate States of America Outlining the postal history of Confederate Florida.

40-45

D. C. Axtell, Leesburg, Florida

Ryukyu Islands Stamps issued under U. S. Administration since World War II.

SECTION B — BRITISH EMPIRE

46-57

blue

John C. Prescott, St. Petersburg, Florida

A study — 3 cent small Queen of Canada.

58-59

Matilda Adams, Bedford, Ohio

The history of England's Railways, describing Postal Markings, Stamps etc.

60-62

Robert W. Pitt, Bradenton, Florida

Registration Marks of Kingston, Jamaica.

The Exhibit

SECTION D — OTHER FOREIGN COUNTRIES

Frame No.

63-66

Red

Maj. Gen. Richard J. Marshall

A study of 19th Century Stamps of Romania.

67-69

Mrs. Paul Withe, Sarasota, Florida

1958-59 Swiss covers and Mint Blocks.

70-71

James Donald, Fort Lauderdale, Florida

Blue

Perforation Varieties of German West Zone Building Issues.

72-77

T. C. Hanson, Lady Lake, Florida

Stamps of Norway — 1855-1960 including cancels and shades.

78-102

blue

E. P. Radford, St. Petersburg, Florida

Semi-Postals Republic of Austria 1918 thru 1950, including Collateral Material Essays, Proofs, Sub Varieties — Unlisted Material.

The Exhibit

SECTION F — TOPICALS, MINIATURE SHEETS AND OTHERWISE NOT CLASSIFIED

103 *Red* Hamilton Pitt, Winsted, Connecticut
Stamps Honoring Doctors.

104-105 Mrs. Ashley C. Le Duc, St. Petersburg, Florida
Miniature and Souvenir Music Sheets of the World.

106-107 *Red* Cyril E. Gibbons, Sarasota, Florida
The Story of Creation.

108-109 Mrs. Marion C. Gibbons, Sarasota, Florida
Maps, Places, Occupations, Plants, Food, Domestic Animals, Wild Animals, Musical Instruments, Tribes, etc.

110-112 Hugo H. Traub, Tampa, Florida
Japanica — Showing Three Emperor Era's "Meiji", Tai-sho and Showa.

113-114 Fred Stivender, Leesburg, Florida
Map of Lake County with Postmarks
Old and Unusual Postmarks of the Area.

115-116 Clarence L. Clinton, Tavares, Florida
A display of New Zealand stamps.

*123-130 Gold Canada White blocks 33 used Geo Lee, n.g.
to Inverts - 1 for
1 H corner
1 neg be double imp 4.5M*

When in our City, please visit

Sarasota Philatelic Club

Meetings

First and Third Thursdays

7:30 P. M.

Community Room

Sarasota Bank and Trust Company

Mailing Address: P. O. Box 3553

Sarasota, Florida

Greetings and our best wishes

University Stamp Club

Meetings 1st and 3rd Thursdays, 8 P. M.

Koubec Center

2705 S. W. 3rd Street

Miami, Florida

Compliments

of

The Sebring Stamp Society

JUDGES

W. Noyes Baker, Chairman

Emmett B. Peter

William G. Bogg, Jr.

George N. Malpass

Bryant Le Duc

Frank A. Berger

Clare M. Phillips, Jr.

Henry T. Van Dyke

COURT OF HONOR

Selections from the National Postal Collection,
Smithsonian Institution, Washington, D. C.

THE BOURSE

Florida Stamp and Coin
120 N. Orange Street
Orlando, Florida

A. C. LeDuc
132 Beach Drive, North
St. Petersburg, Florida

New England Stamp Co.
45 N. Broomfield Street
Boston 8, Mass.

Circus City Stamps
Sarasota, Florida

Carl Edwin Lipton
940 Lincoln Road
Miami Beach, Florida

Dr. Francis Haas
Miami Beach, Florida



THE DORA CANAL

The Dora Canal is located near Tavares, Florida, and has been described by Grantland Rice as "the most beautiful mile of waterway in America." The cypress tree lined canal connects beautiful Lake Eustis with Lake Dora. Many beautiful and rare flora and fauna are to be found in and around the canal. The canal and the entrances to it in each lake are noted for the fine large mouth bass, and other fish. The canal is a natural waterway. U.S. Highway No. 441 crosses the canal near Tavares.