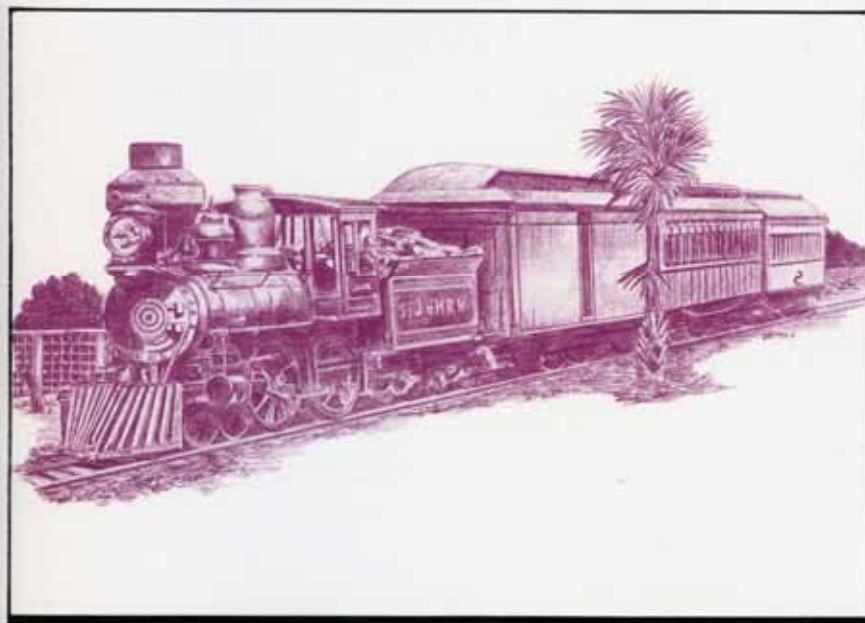


---

---

# **FLOREX '88**

**Orlando, Florida  
November 4, 5, 6**



**THE FLORIDA FEDERATION  
OF STAMP CLUBS**

---

---

**39th ANNUAL CONVENTION**

---

---

In need of an  
**Auction Agent?**

I cover ALL Florida Auction Sales  
References furnished upon request  
Phone — 813-526-5203



*Stan Jameson*  
*Empire Companies*  
*P.O. Box 264*  
*St. Petersburg, FL*  
*33731*



FLORIDA  
*Federation of  
Stamp Clubs, Inc.*

FLOREX '88

TABLE OF CONTENTS

FFSC PRESIDENT, Clyde Jennings .....	3
FLOREX CHAIRMAN, Phil Fettig, and Committee .....	5
SCHEDULE OF EVENTS.....	6,7
EXHIBIT JUDGES .....	8
PHILATELIC EXHIBITS .....	9-11
EXHIBIT AWARDS .....	13
SHOW PROGRAM LITERATURE EXHIBIT .....	14-15
FLORIDA RAILROADS, SHOW THEME .....	17,19
DEALER LIST .....	23, 26-27
FLOOR PLAN .....	24-25
COLLECTING CHINA .....	29,31
POLAR EXPLORERS .....	33
MACHINE CANCELLATION SOCIETY .....	33
TIN CAN MAIL ADVENTURE by Janet Klug.....	37
FFSC MEMBER LIST .....	41,43,45

# SARASOTA PHILATELIC CLUB

Sponsors

## SARAPEX-89

Feb. 3, 4, 5th

Sarasota Exhibition Hall

801 N. Tamiami Trail

200 Frame Exhibit

U S P S

Cachet - Show Cancel

32 Dealer Bourse

Prospectus from:

Marty Norton

3015 Browning St

Sarasota, Fl. 34237

Admission Free

### Welcome to FLOREX '88



To all who have come to FLOREX '88---Federation members, Polar, China, and Tonga Tin Can Mail members, Judges, exhibitors, guests, dealers, and just plain collectors---a big warm welcome. We hope you enjoy yourselves, and all of us involved in putting on the show stand ready to help you any way we can to achieve that.

We trust you will enjoy the ambience of our show site, the hotel's amenities, the meetings and functions we have scheduled including the awards banquet on Saturday evening to which John Apfelbaum has come from Philadelphia to be our Guest Speaker.

I will be on the floor and/or around the show site all three days, so any of you whom I may not have yet had the pleasure of meeting, do please feel free to come up and introduce yourself---particularly if I can help you in any way.

And, remember, Disney World is just down the road a piece!!

Clyde Jennings, President  
Florida Federation of Stamp Clubs

William J. Bomar  
Vice-President

Helen Krasne  
Secretary

William McP. Jones  
Treasurer

#### Regional Directors

Charles F. Winney, Jr., Northeast

J. Edward Evan, West Coast

Bob Querbeck, Northwest

George Athens, Sothwest

Wade H. Berry, Central

Carlos San Martin, Jr., Sotheast

Carl Burnett, South Central

Robert H. Welky, South

Terry Drummond and Dave Wike, Co-Editors of Florida Philatelist

FLOREX '88 would like to thank

HERMAN "PAT" HERST

for his contributions to Florida philately  
and to our hobby in general.

*Melvin M. Kessler*

CLASSIC COVERS  
AND POSTAL  
HISTORY

526 Cheshire Ave., N.W.  
Fort Walton Beach  
Florida 32548  
(904) 862-4091

**The STAMPTIQUE**  
U.S. COILS our specialty;  
U.S. MINT & USED stamps and supplies.

We buy stamps, accumulations and estate holdings.

17 LAKE LORRAINE CIRCLE, SHALIMAR, FL 32779 (904) 651-3437

**DUNWOODY STAMP COMPANY**

P.O. BOX 88548  
Dunwoody, Georgia 30356

Phone: (404) 394-5545 or 394-0209

IRENE & BILL AVERY

**STAMPS FOR COLLECTORS**

\* retail, wholesale \* mail order, shows

**STAMPS, COVERS, AND COLLECTIONS**  
bought, sold, and appraised

MEMBER: ASDA, APS, AFDCS, IFSDA,  
SDAG, CZSG, GPHS, FSDA, GPS



**WELCOME TO FLOREX '88**

This is the year of the multiple! We have four philatelic societies meeting with us, as well as three auctions, and two post offices. We have the China Stamp Society with us for their annual convention. The Tonga/Tin Can Mail Study Group, the Polar Philatelists of America, and the Machine Cancel Society are all having regional meetings.

A further welcome to the post office of the Republic of China is in order. Thanks also to Dennis Lippincott and his staff for the United States Postal Service booth and for his help in securing the special souvenir cancellation.

I would like to give a special thanks to Pat Herst for opening our show again this year and giving two presentations. Despite health problems, he continues to give all he can to our hobby.

Another big welcome and thank you goes to John Apfelbaum of Earl P.L. Apfelbaum Inc. for coming to be our banquet speaker. He continues the fine tradition of top personalities in the stamp world like Pat Herst and Raymond Weill who have honored us as speakers.

We have several other specialized groups meeting with us in addition to the ones mentioned. All this means is there should be something of philatelic interest for each one of you. We do hope that you enjoy your stay and will be back to see us again next year.

I would also like to thank my committee chairman listed below for their hard work. When you see them around the floor, tell them how much you appreciate their efforts. Now let's all enjoy this Florida philatelic fiesta!

Phil Fetting

General Chairman of FLOREX '88

+++++

**FLOREX '88 COMMITTEE**

Carl Burnett ..... Assistant Chairman, Literature Exhibit  
Stephen Patrick ..... Assistant Chairman,  
Program Editor, Cachet, Souvenir Card  
Nancy "Tex" Schaffer ..... Awards  
Jane C. Morrison ..... Banquet  
Barry Savedow ..... Bourse  
Mel Kessler ..... Exhibition  
William McP. Jones ..... Finance  
Clyde Jennings ..... Judges  
Calvin Fiala ..... Public Relations  
Earl T. Reeder ..... Security  
Lewis Etherton ..... Youth Program



# FLOREX '88

## SCHEDULE OF EVENTS

### FRIDAY, NOVEMBER 4

8:00 a.m.	Judges Breakfast	
10:00 a.m.	Exhibition Opens; Ribbon to be cut by Herman Herst	Hall 700 Expo Centre
10:00 a.m.- 2:00 p.m.	Auction lot viewing, Dave Phillips Auction of Postal History	Lake Dot Room
12:00 p.m.	Judges Luncheon	Omni Hotel
2:00 p.m.	Talk by Herman "Pat" Herst "Everything You Wanted to Know About Stamp Collecting, But Were Afraid To Ask"	Place TBA
3:00 p.m.	Dave Phillips Auction	Lake Dot Room
6:00 p.m.	Exhibition Closes	
7:00 p.m.	Auction by Tropical Stamps US & General Foreign	Place TBA

### SATURDAY, NOVEMBER 7

9:30 A.M.	Florida Federation of Stamp Clubs Annual Board Meeting	Sable Room Omni
10:00 a.m.	Show Opens	Hall 700

At press time, the final meeting times and rooms were not set for the four groups meeting with us. Please refer to the special insert for the times of meeting for the China Stamp Society, the Polar Philatelists, the Machine Cancel Society, and the Tonga/Tin Can Mail Society.

## SCHEDULE continued

10:00 a.m.	Pat Herst Talk (See Friday at 2:00 p.m.)	Place TBA
10:00 a.m.- 2:00 p.m.	Viewing of Auction Lots, Asia Material by Michael Rogers, Inc.	Place TBA
11:00 a.m.	Florida Federation of Stamp Clubs General Meeting	Sable Room Omni
1:00 p.m.- 2:00 p.m.	Judges Critique	Place TBA
3:00 p.m.	Asia Auction, Part 1 Michael Rogers, Inc.	Place TBA
6:00 p.m.	Show Closes	
6:30 p.m.	Cash Bar Opens	
7:15 p.m.	Banquet Hall Opens Guest Speaker - John Apfelbaum	Grand Ballroom C

### SUNDAY, NOVEMBER 8

10:00 a.m.	Show Opens	Hall 700 Omni
11:00 a.m.	Asia Auction, Part 2 Michael Rogers, Inc.	Place TBA
3:00 p.m.	Exhibition Frames Area Closed	
4:00 p.m.	Show Closes Official End of FLOREX '88	

## FLOREX '88 PHILATELIC EXHIBIT JUDGES

**Bill Bauer**, Chief Judge - A past president of the American Philatelic Society and presently Chairman of Judges; internationally qualified. A collector of postal history especially that of Colorado.

**Werner Bohne** - Better known as "Mr. Germany"; handles all expertizing for the German Philatelic Society. Many years accredited with international experience.

**Ernest Cohn** - Known as "Mr. Postal History", he authors a regular column in the APS Philatelist. Long accredited with international standing.

**George Guzzio** - An internationally accredited judge, he is known as "Mr. Topical". He is recognized as one of the top two judges in the topical/thematic area. He is famous for his "Penguinalia" Gold Award winning exhibit.

**Phil Ireland** - Talk of a group of specialists! Here is "Mr. China". He was invited to Taiwan in 1981 by the government to show his China in the Court of Honor at ROCPEX '81.

Special Message concerning FLOREX judging.

All exhibitors are invited to submit their exhibits both this year and next. Federation President Clyde Jennings is giving this opportunity to compare judging by the "old hands" as compared with the "new breed".

The 1989 panel has already been selected and invited to both this year and next. They are relatively newer to the scene of philatelic judging and may offer opinions based on evolving exhibition standards.

FLOREX '89 judges are Patricia S. Walker, Chief Judge, Richard Drews, Doug Kelsey, Peter McCann, Roberto Rosende.

## FLOREX '88 PHILATELIC EXHIBITS

Frame # Exhibitor, Title, Description, and Category.

1-10 J. Edgar Williams. The Polynesian Dependencies of New Zealand. Overview of New Zealand's "mini-empire" - basic stamps, varieties and usages illustrative of postal history and postal stationery. III.

11-16 Paul Hennefield. Alternate Lifestyles of Famous People. A philatelic collection showing gay heritage from Greek mythology to the present. X

17 Jay A. Shoemaker. The Pa Kua Cancels of Imperial China. Study of assignments and use of Pa Kua hexagrams as cancels on mail in China between January 1897 and early 1899. VI

18-27 John M. Hotchner. Stamp Separation: From 1840 to Modern Times. Traces development of separation from earliest days to modern production including perforation interaction with other elements. XI

28-32 Niles Schuh. Florida Stampless Covers. Usages of Florida markings during the territorial and early statehood periods. I

33-34 Laurence L. Benson. The One Penny Ovava Tree of Tonga. A study of varieties of the one penny ovava (banyan) of Tonga. IV

35-40 Mrs. Gerald H. Davis. Philatelic Opera. Selected pages from Jacobo Peri (1561-1633) to Guiseppi Verdi (1813-1901). Commemoratives and philatelic items portraying composers, librettists, opera performers, scenes, and opera theater. III

41-47 Rufino R. Pernes. Portuguese India of the XIX Century. Classics on and off cover. Every type of postmark, errors, forgeries, surcharges, etc. Study of the Crown Issues of 1882-83, King Carlos, Luiz, and commemoratives. IV

48-51 Alvaro Pachero. Shanghai Large Dragons. An exhibit of the printings, varieties, forgeries, and translation of the Chinese characters encountered in the printings of the Shanghai Large Dragons. VI

52-58 Robert B. Querbach. 1945-46 Hungarian Covers. From all 27 postal rates during this record (15 months) inflationary era; including local, domestic, foreign, air mail, postage due, registration services, etc. IV

59-68 Salamon Borten. Postal Communications between the Argentine Mainland and Islas Malvinas Since 1970 to the Present. XI

EXHIBITS continued

- 69-75 Darrel Ertzberger. Cottrell Press Issues of the Transportation Coil Series. An examination of the values of the Transportation Coil Series printed on the BEP's Cottrell Press. I
- 76-85 Michael D. Jolly. The "Germania" Issues: From the First Printings of 1899 to 1922. A study of the designs and overprints including essays for homeland, offices, and the effects of Versailles. IV
- 86-89 Vernon C. Moore. Sing Along With Stamps. A whimsical look at some issues which recall familiar lyrics from universally popular songs and classical compositions. X
- 90-99 Wes Dunaway. The Phillipine Insurrection. Stamps, errors, cancellations, and covers of the "Filipino-American War" with emphasis on Aguinaldo material. I
- 100-102 Laurence J. Benson. From Tin Cans to Twin Otters. The last half century of Tin Can Mail is spanned from 1934 until it ceased to exist in 1983-1984. IV
- 103-112 William H. Farrell. Classic Austria 1850-67. A study of the first five issues of Austria, including a detailed examination of plate varieties, representative cancels, and usages. IV
- 113-120 Deane Richmond Briggs. Florida Manuscript Postmarks. Pre-territorial (military government), territorial, statehood, C.S.A., and post-C.S.A. 19th century usages will be documented. I
- 121-128 Laurence J.G. Franks (New Zealand). Shanghai Local Post. A study of issues including cancellations used at other treaty posts, both inverted cancels and date stamps used by the Chinese post office after takeover. VI
- 129-136 Dr. Paul J. Szilagyi. Stamps of Baranya, Hungary Occupied 1918-1922. The stamps of Baranya occupied by the Serbian army but administered by the Hungarians. The times following World War I were one of the most complicated historically and postally. IV
- 137-142 Kam-Yuen Choy (Hong Kong). External Mail Routes of China, 1840's-1940's. Use of postal markings on covers and postal cards to study a century of sea, land, and air routes for delivery of mails in China. VI
- 143-148 Mark W. Swetland. Antigua, 1862-1932. Antigua stamps from 1862-1932 with proofs, essays, trial colors, mint, and used. III

EXHIBITS continued

- 149-154 Robert Benninghoff. Irish Coil Stamps, 1922-27. The exhibit demonstrates the variety of stamps produced for use as coils in Ireland including one of the rarest Irish stamps. III
- 155-158 Ellery Denison. German Presence in China. This exhibit shows the German post offices in China, the colony of Kiauchau and military usage. VI
- 159-160 A.D. Curtis. Joseph Stalin, from Peasant Beginning to World Leader. A philatelic biographical study of his personal drive to implementation of his socialist ideals toward world domination. X
- 161-162 Wes Dunaway. Selected Chinese Covers, Shanghai Due, Paid, Combination Use of all Shanghai Post Offices. VI
- 163-166 Ronald W. Yankowski. The Golden Age of the Automobile, 1898-1941. A philatelic study of advertising covers and related items. X
- 167-170 Ellery Denison. Chinese Postal Stamp Booklets. A study of Chinese stamp booklets issued by the Republic of China. VI
- 171-173 Anonymous. Plate Number Coils. A Complete collection of all known numbers and issues in mint strips of three and/or five, with a few varieties. I
- 174-179 Norman W. Townsend. First Flights of China, 1921-1937. A history of Chinese Air mail, from the first flight in 1921 to the flights in 1937 when the Japanese invaded China. VI
- 180-185 Joan R. Bleakley. Frog and Toad Trivia. Highlighting their characteristics and role in science, literature, fine arts, and other creative works of man. X
- 186-189 William R. Cluck. Chinese Express Stamps, 1905-1916. 190-195 Janet Klug. Tonga Definitives, 1897-1953. Shows errors, varieties, retouches, and postal usage during 56 years use of the issues. III
- 196-200 Laurence J.G. Franks (New Zealand). Shanghai Defense Force (British). Yangtse River gunboat mail forerunners, and British military post offices in China, 1927-40. IV

ST. PETERSBURG

S T A M P  
C L U B



Founded 1923

MEETS EVERY WEDNESDAY 7:30 p.m.  
TRINITY LUTHERAN CHURCH  
401 5th ST. N.

*Best Wishes To FLOREX*

A.P.S. Chapter 157  
Florida Federation of Stamp Clubs

## FLOREX '88 EXHIBIT AWARDS

### Florex '88 Awards

Grand Award, Reserve Grand, Gold, Vermeil, Silver, Silver/Bronze, Bronze

### Florex '88 Youth Awards

Grand Award, Reserve Grand

### American Philatelic Society

Pre-1900, 1900-1940, Post 1940, Research Award

### American Association of Philatelic Exhibitors

American Topical Association

Bureau Issues Association

American Air Mail Society

American Society of Polar Philatelists

China Stamp Society

India Study Circle

Puerto Rico Philatelic Society

Tonga Tin Can Mail Society

U.S. Cancellation Club

U.S. Philatelic Classics Society

Collectors Club of Chicago

Hollywood Stamp Club

for Best Postal History

### Florida Stamp Dealers Association

for Best Exhibit by member of Florida Federation

### Orlando Postmasters Award

John J. Britt Award

### Ingeborg Herst Award

for Best Exhibit by a Woman

### Henry M. Gobie Award

for Best U.S. Possessions Exhibit

### Maurice Apfelbaum Award

for Best First Time Exhibitor

Most Popular by U.B. Thejudge

## FLOREX '88 SHOW PROGRAM LITERATURE EXHIBIT

This is the second year that Florex has attempted to give recognition to those unsung heroes who produce show programs like the one you hold in your hands. Credit Carl Burnett of Melbourne, FL as the sparkplug behind this innovation.

### JUDGES

Dave Kent - New Britain, CT  
Janet Klug - Pleasant Plain, OH  
Don Smith - Johnstown, PA

### EXHIBITS

Class "A" - Single Page Programs.

INDYPEX '87	Indiana Stamp Club Indianapolis, IA
MILCOPEX '88	Milwaukee Philatelic Society Milwaukee, WI
PRINCEPEX '88	Eastern Prince William Stamp Club Woodbridge, VA
SARAPEX '88	Sarasota Philatelic Club Sarasota, FL
WISCOPEX '88	Editor - Robert J. Mather Waukesha, WI

Class "B" - Multi-page, single sponsored shows.

AIRPEX XII '87	Dayton Stamp Club Dayton, OH
AUSPEX '88	Austin - Texas Stamp Club Austin, TX
C.B.PEX '88	Editor - Peter Pierce Oxford, MA
HUNTSPEX '88	Editor - Edward Kazmierczak Huntsville, AL

Class "B" - continued

ORAPEX '88	Editor - Charles Verge Ottawa, Ontario
ROAPEX '88	Big Lick Stamp Club Roanoke, VA
WILKPEX '88	Editors - Eugene Bujdos & Harold Cline Pittsburg, PA
YORCOPEX '88	White Rose Philatelic Society of York Glen Rock, PA

Class "C" - Multi-page, co-sponsored, state & national level shows.

ARIPEX	Editor - Donn Lueck Phoenix, AZ
COMPEX '88	Combined Area Clubs Chicago, IL
OLYMPEX '88	Editor - Dale Speirs Calgary, Alberta
PHILATELIC SHOW '88	Editor - Peter Pierce Oxford, MA
WESTPEX '88	Editor - Wayne Menuz San Jose, CA

### AWARDS

FLOREX '88 Awards - Each category, Gold Metal Ribbons -  
Vermeil, Silver, Silver/Bronze, Bronze

American Association of Philatelic Exhibitors -	Grand Award
Florida Stamp Dealers Association -	Reserve Grand
Missile Stamp Club -	People's Choice Award



**William J. Bomar**

2801 ZEPHYR ROAD  
ORLANDO, FLORIDA 32806  
(407) 425-6018

**AUTHOR OF**

"Postal Markings of United States Worlds Fairs"

**COLLECTOR OF**

U.S. Flag Cancels, Machine Cancels, Slogan Cancels,  
Classic Precancels (1903 & Prior) on and off Cover.

**PLUS**

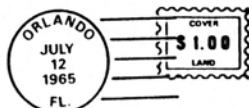
Station Markings, Advertising Covers, Post Cards,  
Admission Tickets, Ad-Seals, and  
Memorabilia of all United States Worlds Fairs

These are permanent wants, so keep me in mind!!!!

MEMBER: APS, APC, ARA, BIA, CSA, FCS, IHPS,  
MPOS, PSS, USCC, USPCS, WCS, TMPS

ASDA AFDCS  
FSDA APS USCS

Dealer in  
U.S. Stamps and  
First Day Covers



**Dolphin Covers**  
Attn: Phil Fettig  
P.O. Box 560837  
Orlando, FL 32856

**JOSEPH BANFI**



5965 SE Federal Highway (US 1)  
Cove Center  
P.O. Box 1198  
Stuart, FL 34995  
(407) 283-2128



*Philatelic Sales, Purchases and Appraisals*

**A Salute to Florida Railroads**  
by Stephen Patrick

Pictured on the cover of this program is Engine Number 3 of the narrow gauge St. Johns & Halifax River Railway. The Baldwin engine was named the Bulow after the Bulow sugar plantations near present day New Smyrna. The year was 1886 and Henry Morrison Flagler, a multimillionaire partner of John D. Rockefeller and the Standard Oil Trust, was becoming aware that the current railway system in northeast Florida was not commensurate with his plans to transport a rich, Northern clientele to his new resorts in St. Augustine and Ormond Beach. Flagler's solution was to buy the lines.

In 1888 Flagler ordered all his lines to convert to standard gauge, thus a century ago marked the first year of empire-building along the east coast of Florida. In 1895 Flagler received a new charter which was the start of the Florida East Coast Railway. It was many years before the line turned a profit although it turned to homesteading and farm production to increase its freight business. For a while Flagler was content to pause at West Palm Beach with his Royal Poinciana and The Breakers hotels.


The oft-told tale of Mrs. Julia Tuttle sending an unfrozen citrus branch from Miami to contrast with the lost crops at West Palm eventually secured an extension of the line to the shores of Biscayne Bay. This set the stage for the heroic eight year expansion project to extend the line "overseas" to Key West. On January 22, 1912, just five months before his death, Flagler rode the first train into Key West and continued by steamer on to Havana, Cuba. His final dream was realized.




The author's great-grandfather took this picture in early 1900's.



STAMP & COIN SUPPLIES (305) 933-2225



**A & R STAMP & COIN, INC.**  
 AMERICAN PLAZA  
 1512 WEST IRLO BRONSON MEM. HWY (RTE 192)  
 P. O. BOX 730  
 KISSIMMEE, FLORIDA 32741



UNITED STATES & WORLDWIDE STAMPS  
UNITED STATES COINS

"We Buy, Sell and Appraise"


14 Karat Gold  
Sterling Silver  
Chains and Bracelets  
Sold by Weight

TUES - FRI 10:00-5:30/SAT 10:00-4:00  
Closed Sunday and Monday

ANN FETTING      EARL T. REEDER

---

S. GEORGE TRAGER  
STAMPS & COINS FOR COLLECTORS




301 41ST STREET  
 MIAMI BEACH, FLORIDA 33140  
 (305) 531-6727

---



**EXCELLENT  
UNITED STATES  
STAMPS COVERS AND PROOFS**

Send \$1.00 for your  
fully illustrated Net Price Sale  
catalogue of excellent United States  
stamps, covers and proofs.

- Aggressive buyers of quality U.S. stamps.
- Expert appraisals and collection consultation.
- Personalized want list service.



**DAVID CHAMPAGNE INC.**  
 POST OFFICE BOX 361095  
 MELBOURNE, FLORIDA 32936  
 407 773-9217

## The Plant System

Henry B. Plant entered the race to secure a Florida rail system by purchasing the Savannah, Florida & Western Railway in 1879. Shipping interests had tried to exclude railways from crossing state boundaries, so Plant built two different roads from the north and south that met at the St. Marys River on the Georgia line. Two docks were built, one from each bank, that conveniently met in the middle of the river forming a bridge. Eventually state laws were changed and Plant's system crossed the line several more times as it extended west and south.

Plant was able to use seven different companies to crisscross the central Florida area and build a magnificent hotel in Tampa served by his railroad. In 1902 he sold his holdings to the Atlantic Coast Line which became a backbone trunkline in the southeast.

One interesting story illustrates the competitive spirit among these early pioneers. In 1901 the US Postal Department had been trying to speed the delivery of Florida and Cuban mails. A "test" was to be held between the Seaboard Air Line and Plant's Savannah, Florida, and Western to see which could carry the mail faster between Savannah and Jacksonville. The Seaboard line had the most direct route and planned a normal train at a fast clip. The Plant System fine-tuned their new Number 111 which was to pull only a 60 foot postal car and a standard sleeper.

Veteran engineer Albert Lodge was given one simple command: Win the contract. Officials in the sleeper noted a rapid speed and clocked the train going 108 miles per hour! Despite two water stops and slowdowns for two crossings, the last 115 miles from Jessup to Jacksonville via Waycross took only 100 minutes. After setting a new US speed record, Lodge checked out and went to the railroad hash house for a meal. The Seaboard crew walked into the terminal at Jacksonville asking whether the other had passed Waycross yet. The official timekeeper replied that the mail load was "almost in Cuba about now, I reckon."

The many colorful stories about the pioneer railroads in Florida are history now. Some of them can be found in a wonderful book by Robert W. Mann called *Rails 'Neath the Palms* printed by Darwin Publications, Burbank, California. FLOREX '88 is pleased to honor Florida railroads with its last century of progress. With current speculation by foreign firms to build new supertrains connecting major cities in the state, perhaps 100 years from now others will look back humorously on our current system the way we muse about those old steam locomotives from years ago.

## Germania Stamp Co.

SPECIALIZING IN GERMAN PHILATELY

RUSSELL L. CASE, JR.

GPS, APS, FSDA

P.O. Box 677453

Orlando, Florida 32867

We BUY and SELL

POSTAL HISTORY of the WORLD



### NEW ENGLAND NORTH

Postal History Appraisals

P.O. Box 216, Waban, MA 02168-0216

Telephone: 617-527-4784

CCNY

CSPM



CSDA

FSDA

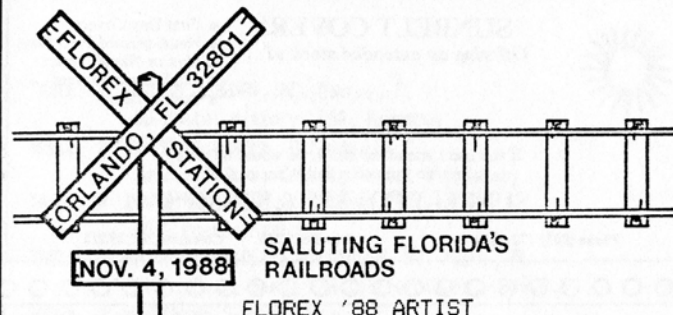
### RARE STAMPS AND COVERS

*Service, Courtesy, Confidence*

ASDA  
NEW YORK  
PTS  
LONDON



Gordon  
McHenry, Inc.  
Phone (813) 966-5563  
Box 117  
Osprey, FL 33559



Terry Dietrich of Apopka, Florida, is again our artist for both the souvenir cancellation and the artwork on the program cover, souvenir card, and show cover. Born in North Dakota, he studied art at Pacific Union College in Angwin, Cal. and Andrews University in Berrien Springs, Mich. Known for his unique pencil sketches, he teaches at Forest Lake Academy in Apopka, Fla.

## CARL SNYDER

BOX 3577

BALTIMORE, MD 21214

### POSTAL HISTORY OF THE WORLD

18 YEARS AT FLOREX

See us at Table 41

## PHILATELIC ENTERPRISES

BOX 3580

Peoria, IL 61614

We sell COLLECTIONS, ACCUMULATIONS,  
SETS & SINGLES plus COVERS OF THE WORLD.  
All at PRICES you will APPRECIATE.



### SUNBELT COVERS

Offering an extended stock of...

- First Day Covers
- Hand-painted First Days
- Ship or Naval Covers
- Confederate Covers
- Postal History

If you can't attend the show, we would be happy  
to receive your want list! Write or Call:

### SUNBELT COVERS & STAMPS

Phone (803) 772-1964

P.O. Box 2211

Columbia, SC 29202

### PHILATELIC CONSULTANTS

Box 1775

Darien, Georgia 31305

U.S., CANADA, BRITISH COMMONWEALTH  
WESTERN EUROPE, WORLDWIDE

COVERS, SETS, STAMPS, LOTS, COLLECTIONS

Always Buying Collections



U.S. STAMPS & FIRST DAY  
PLUS  
BRITISH COMMONWEALTH STAMPS



### SIDNEY'S STAMPS

OF ATLANTA, INC.

"WE BUY COLLECTIONS"

P.O. BOX 450045  
ATLANTA, GA. 30345  
404-491-3373

PHIL & DEBI RICH

SID & BETTE RICH

### arlington stamp and coin co.

1350 UNIVERSITY BLVD., N.  
P.O. BOX 11019  
JACKSONVILLE, FLA. 32211  
(904) 743-1776

### SHOW DEALERS LISTING

- TABLE 1 GORDEN McHENRY, INC., Osprey, FL  
US Postal History, CSA, Revenues
- TABLE 2 GERMANIA STAMPS, Orlando, FL  
German Stamps, Covers, Postal Stationery
- TABLE 3 DAVID CHAMPAGNE, Melbourne, FL  
US & Postal History
- TABLE 4 NATIONAL WILDLIFE GALLERIES, Ft. Myers, FL  
Fish, Duck, Game, & Wildlife Stamps, US/B.O.B.
- TABLE 5 WORLDWIDE STAMPS, Quincy, FL  
Worldwide Stamps & Sets
- TABLE 6 SUNBELT COVERS, Columbia, SC  
Postal History, FDC's, Covers
- TABLE 7 TROPICAL STAMPS, Ft. Lauderdale, FL  
US Stamps, Errors, Covers, & Collections
- TABLE 8 J. CHOVAN STAMPS, Camden, DE  
W/W Postal History & Stationery, Asia
- TABLE 9 TRIPLE "S" STAMPS, Urbana, OH  
Worldwide Postal History
- TABLE 10 MELVIN M. KESSLER, Ft. Walton Beach, FL  
Classic Covers and Postal History
- TABLE 11 THE STAMP-TIQUE, Shalimar, FL  
US Coils & Booklet Panes, Canada
- TABLE 12 M & M STAMPS, Mesa, AZ  
US Coils, EFD's, & Postal History
- TABLE 13 PHILATELIC ENTERPRISES, Peoria, IL  
US, Canada, Germany
- TABLE 14 LIPTON/BANAS, Miami, FL  
US Singles, Plate Blocks, and Covers
- TABLE 15 FREDRICK W. WULFF, LTD, Apopka, FL  
Collections, Covers, US
- TABLE 16 PARK BLVD STAMPS, Pinellas Park, FL  
US & Foreign Lots
- TABLE 17 INTERSTAMP, Boca Raton, FL  
Brit. Commonwealth, Fr & Colonies, Scandinavia
- TABLE 18 THE STAMP PROFESSOR, Sarasota, FL  
US & Worldwide



SHOW DEALERS continued

- TABLE 19 DUNWOODY STAMP COMPANY, Dunwoody, GA  
US, UN, Canada
- TABLE 20 HARRIS/ELLENBURG, Glen Echo, MD  
US & Worldwide Covers
- TABLE 21 A & R STAMPS, Kissimmee, FL  
British, US, Supplies
- TABLE 22 ARLINGTON STAMPS, Jacksonville, FL  
US, British, Air Covers, FDC's
- TABLE 23 MAGELLAN ENTERPRISES, Dunedin, FL  
Asia, Worldwide
- TABLE 24 JOSEPH BANFI, Stuart, FL  
Australia, Worldwide, Mail Sales
- TABLE 26 WINTER PARK STAMPS, Winter Park, FL  
US, Worldwide, Asia
- TABLE 27 GOLDEN PHILATELICS, Cedarhurst, NY  
Revenues, Officials, Proofs, & Essays
- TABLE 28 BROWSE HOUSE, Holly Hill, FL  
US/WW Collections, US FDC's, Sheets
- TABLE 29 PHILATELIC CONSULTANTS, Darien, GA  
WW Stamps, Covers, Sets, Collections
- TABLE 30 DAVID G. PHILLIPS, North Miami, FL  
US Postal History and Covers
- TABLE 31 STARNES STAMPS, Winchester, KY  
US/WW Stamps & Covers, Revenues
- TABLE 32 COURT STREET STAMPS, Clearwater, FL  
British, US, Worldwide
- TABLE 33 EDWARD F. PALMER, Ft. Lauderdale, FL  
US & Possessions, WW, Lots & Collections
- TABLE 34 SAM HOUSTON PHILATELICS, San Antonio, TX  
State/Fed Ducks, Plate No./Transfer Coils, US
- TABLE 35 MICHAEL STAMPS, Titusville, FL  
US Postal Cards, Covers, Stamps
- TABLE 36 H. & S. ROGG, Port Richey, FL  
W/W Mixtures, US Stamps & Covers

SHOW DEALERS continued

- TABLE 37 VICTORIA STAMPS, Ridgewood, NJ  
British Empire
- TABLE 38 RICARDO DEL CAMPO, Miami, FL  
Cuba, US, UN
- TABLE 39 ASIA PHILATELICS, CA  
Asia
- TABLE 40 S. GEORGE TRAGER, Miami, FL  
Covers, US, Worldwide
- TABLE 41 CARL SNYDER, Baltimore, Md.  
Civil War, Air Covers, Fla Covers & Cards
- TABLE 42 WARD MORTON, Summerfield, FL  
France, Scadenavia, Booklet Panes
- TABLE 43 JOHN C. OLSON,
- TABLE 44 JERRY SIEGEL, Davie, FL  
US, British, General Foreign
- TABLE 45 NEW ENGLAND NORTH, Waban, MA  
W/W Postal History, Brit. Comm. Stamps
- TABLE 46 SUNSET STAMPS, South Miami, FL  
Worldwide, Topical, Officials
- TABLE 47 SIDNEY'S STAMPS, Atlanta, GA  
US FDC'S & Stamps, British Commonwealth
- TABLE 48 NEW ENGLAND STAMPS, Naples, FL  
US Stamps & Naval Covers, W/W Postal History
- TABLE 49 BLACKJACK TRADING COMPANY, Columbia, SC  
US & WW Covers, Paper Americana
- TABLE 51 MOLNAR STAMPS, Sarasota, FL  
US, British, Worldwide Sets & Singles
- TABLE 52 STARFIRE STAMP SERVICE, Orlando, FL  
Latin America, Brazil, Mexico
- TABLE 53 CLASSIC STAMPS, Atlantic Beach, FL  
W/W Postal History, Topical Covers
- TABLE 54 JOY COVERS & STAMPS, Forestville, MD  
FDC's 1960-Date, FD Ceremony Programs, Topicals



## STAMPS

### A Hobby That Lasts a Lifetime!

- ★ Central Florida's Largest & Oldest Stamp Shop
- ★ We speak fluent Mandarin & Cantonese, Chinese, Korean, French & German
- ★ Most Albums & Supplies Discounted
- ★ Free Appraisals to Sellers

LICENSED ★ BONDED ★ INSURED

U.S. & Foreign Stamps & Covers

Our Specialty: Asian Stamps

Member Asian American Chamber of Commerce & Better Business Bureau



VISIT OUR SHOP:

**Winter Park Stamp Shop**

340 Park Avenue North, Winter Park, FL 32789

(407) 628-1120



## WORLDWIDE STAMPS

Quincy, Florida

See Jim McNaughton at Table 5  
for worldwide stamps and sets.



**M & M / Southwest**



1344 West University, Mesa, AZ 85201  
1-800-553-3351 1-602-890-2924

Specializing In

Quality US Plate Number Coils, Booklets and Panes

**YES, WE ARE BUYING!**

## COLLECTING CHINA

Since Marco Polo visited the East, Westerners have long been fascinated by all things Oriental. Travel agents tell us that bookings to Asia have mushroomed in the past decade. Los Angeles is projected to be the next US financial hub, replacing New York, because of its proximity to Asia. From Hondas to VCRs, from Chinese restaurants to Kung Fu movies, the Orient has touched our lives in ways too numerous to count.

China's stamps and postal history have been fashioned to a large degree by the ever changing political situation caused by wars and turmoil. Because its postal history reflects that, philately is at once more interesting and intricate. Material is less likely to have been created by philatelic merchants. There is so much more to be collected than new issues.

There are three basic areas to collect in China: Mainland 1878-1949, the Republic of China (ROC) since 1949, and the People's Republic of China (PRC) which actually started in the late 1920's to serve the needs of the Communists in their struggle with the Nationalists.

Mainland China starts with the Imperial system through 1911 and includes the Large and Small Dragons, Dowagers and surcharges 1894-7, the 1897 Red Revenues, and the Coiled Dragons 1898-1912. The 1911 revolution caused the republic, first under Sun Yat Sen and then Chiang Kai Chek. The 1912 commemoratives and Junks come in this period plus the many surcharges of 1937-1949 reflecting currency reforms and regional issues. Remember, these are intricate issues and can be difficult to find. Even a \$2 stamp can be a hunt!

These Mainland issues are collected avidly both in the ROC and PRC. PRC issues are forbidden on Taiwan, but Taiwanese ROC issues are allowed on the Mainland. Collectors in both Chinas are highly motivated to collect their own issues. Because much of the earlier materials were taken out of China by missionaries and other foreigners, the Chinese seek material from overseas. This creates another level of demand in the US and elsewhere. Dealers on the show circuit and via mail order know how popular Chinese material really is, and that demand by non-Chinese collectors is growing. Since this demand is genuine and not speculative, prices for the most part edge upwards only.

On pre-1949 material, condition is not that important. Certainly nothing is passed by because of a hinge mark, light toning, or dull gum. In China, air conditioning is available only to the wealthy, so what is acceptable condition is less exacting than overseas. Post-1949 is





## RIDE THE NEXT WAVE IN ASIAN PHILATELY

JOIN the thousands of collectors we have assisted via:

**NET PRICED LISTS:** Our frequent pricelists comprehensively cover Asian Philately. Not since the Livingston-Korzyn-Hughes heydays of the 1960's has another dealer offered China as we have. Our competitively priced, specialized inventory of stamps and postal history is offered via net priced booklets. Request our 32 page China 1878-1988 pricelist/handbook; specialized monthly booklets offer specific areas in depth. We prefer **not** to charge for subscriptions: a purchase places you on the mailing lists for a year. Send \$1 (\$2 airmail) for current pricelist/handbook.

**PUBLIC AUCTIONS** specializing in Asia + Airposts. Our extensively photographed auctions stress the specialized stamps, postal history and collateral that collectors crave. **CONSIGNMENTS ARE INVITED:** Our commission is 10%/10% to the buyer/seller. No charges for photographs, lotting, insurance or unsold lots. **CONTACT US NOW.**

**FORGERY AND IDENTIFICATION MONOGRAPHS** are distributed free with pricelists. Our monographs to date — **How to Separate Chinese Stamp Papers, Japanese Occupation of China, Shanghai, Chinese Postmarks, etc.** — have won critical acclaim.

**PUBLISHING INDISPENSABLE LITERATURE:** Our **English-Chinese Philatelic Dictionary & Identification Key**, enthusiastically reviewed in the New York Times and philatelic press, S.A. Pappadopolu's **Catalogue of China & Treaty Ports**, and continuing series of **Chiu's Supplements** (Silver Yuans, Chinese Military Posts etc.) reflect our commitment.

**BEST ASIA AWARD:** We sponsor the **Michael Rogers Best Asia Award** to encourage the exhibition of Asian material at philatelic expositions. Our gifts of objects of art congratulate one's sharing of knowledge and beauty.

**WE HAVE A VORACIOUS APPETITE** for common and specialized Asian material. Whether a better piece, collection or dealer stock, we are aggressive, knowledgeable buyers who will pay a fair price for our needs. Ship what you have with your phone number for a fair, immediate offer. If we cannot pay what you consider fair, we will return it immediately at our expense.

**MICHAEL ROGERS**  
340 PARK AVENUE NORTH  
WINTER PARK, FLORIDA 32789  
(407) 628-1120 Retail Store  
(407) 644-2290 Mail Order/Office

## COLLECTING CHINA continued

another story. These issues must be never hinged or they will have a substantial discount. Even ungummed issues are demanded never hinged, though these marks may be easily removed. So there are different standards for different material.

Since Scott is intended to be a general catalogue, little information of a detailed, specialized nature is provided. There are English language catalogues available. Here in Winter Park is located Michael Rogers, Inc. (See ad). I suggest that you acquire the English-Chinese Philatelic Dictionary & Identification Key by Michael Rogers and Jan Syua Yang (\$11ppd) which will teach you to organize Chinese characters, read postal markings, and identify cancellations. Ma's China 1878-1947 and the Pappadopolu's China Catalogue (\$10ppd) goes far beyond the basic Scott China listings.

Stamp shows in the People's Republic have no dealer bourses in China stamp shows! Collectors assemble to view exhibits of stamps and postal history. Students form stamp clubs in schools which serve as educational forums. They learn and trade. Collectors in China for the most part do not collect using albums; rather they use home made stamp stockbooks.

PRC issues from 1949 to date, excluding Cultural Revolution issues, are conveniently coded at the bottom of the stamp beneath the design with the year of issuance and sequence of issue for that year. And excluding the Cultural Revolution issues, almost all the rest of the PRC issues reflect non-political themes: fish, flowers, art, and exhortations to build the country. And generally there are no counterfits to worry about.

The Taiwanese issues of the Republic of China reflect Chinese themes of art, pottery, famous landmarks, and leaders of past and present. In the land where printing was started, they take care to produce many beautiful issues. There are no counterfits or difficult-to-identify issues. The 1949-1953 issues were printed in low quantities and since the Taiwanese are avid stamp collectors, demand for these issues is overwhelming.

China is a fantastic area to collect. We are happy to welcome the national meeting of the China Stamp Society. Stop by their information table if you have interest in joining or you can write their treasurer Norman W. Townsend, 7490 Noble Rd., Windsor, OH 44009, for more information. Whether a general collector or specialist, you'll find the chance to collect anything you want, from recent, pretty issues and topicals, to the older pieces steeped in history. Enjoy!

# NATIONAL WILDLIFE PHILATELICS

11000-33 Metro Parkway  
P.O. Box 061397  
Fort Myers, Florida 33906-1397  
Phone (813) 275-0500



## SUNSET STAMPS

SOUTH MIAMI,  
FLORIDA

Table 46

Worldwide  
Topicals  
Officials

Welcomes You To

FLOREX '88

## COMPLIMENTS OF

## MAGELLAN ENTERPRISES

Dunedin, Florida

Table 23

A.F.D.C.S. - A.P.S. - A.T.A. - A.S.D.A.

## JOY COVERS & STAMPS

U.S. FIRST DAY COVERS & TOPICAL STAMPS

DONNA JOY SIGLER P.O. BOX 47051  
(301) 736-4369 FORESTVILLE, MARYLAND 20747

## The MACHINE CANCEL SOCIETY

FLOREX '88 is happy to host the regional meeting of the Machine Cancel Society. This organization is dedicated to the study of the many characteristic machines that have produced the various styles of cancellations on the US mail. One familiar example would be the familiar flag cancels produced by the American Postal Machines Co. from 1896 to 1941.

They produce a fine quarterly journal called Machine Cancel Forum. Information about the Society may be found at their welcome table or by writing Bart Billings, 90 Le Sabre Way, Zephyrhills, FL 34248 who is a director and editor of the journal.

Among the benefits of membership is an active sales circuit, quarterly auctions, and comprehensive catalogs like A Study by Consulting Editors, one of their recent publications.

If you would like to get an idea of what they are about, attend the interesting slide presentation given by Frank Stratton on the Leavitt machines on Saturday afternoon at 1:30.

## AMERICAN SOCIETY OF POLAR PHILATELISTS

The American Society of Polar Philatelists has grown from its beginnings in 1956 to an international organization of almost 1000 members in the U.S. and 33 countries. This group has the common interest of the stamps, covers, and postal history of the polar regions, North and South.

U.S. philatelists are familiar with the 1933 stamp and 1934 souvenir sheet which honored William Byrd's second expedition to the South Pole. The 1986 and 1988 se-tenent commemoratives which honored U.S. polar explorers have heightened awareness of the daring deeds of these great men.

Several nations that maintain bases in the Antarctic release stamps and provide special cancellations which recognize the special mission of those that keep lonely vigils in the polar regions.

Information about membership in this society can be obtained at the welcome table or by writing J.L. Blackburne, 21816 8th Place W., Bothell, WA 98021.



*DUCK STAMPS, OUR SPECIALTY*

**Bob Dumaine** 14654 Memorial Dr., Houston, Tx 77079  
President & Auctioneer (800) 231 - 5926 (713) 493 - 6386

Compliments of

**JOHN CHOVAN, Jr.**

P.O. Box 384  
Camden, Delaware  
19934  
(302) 697-2219

See Table 8  
for

Worldwide  
Postal History  
Postal Stationery

With Best Wishes  
To  
FLOREX '88  
FROM

THE  
STAMP  
PROFESSOR

John Hunter  
Sarasota, FL  
Table 18

APS

ASDA

*Compliments of*  
**DAVID G. PHILLIPS CO., INC.**

P.O. BOX 611388  
NORTH MIAMI, FLORIDA 33161  
PHONE: (305) 895-0470  
PUBLISHER OF AMERICAN STAMPESS COVER  
CATALOG



**INTERSTAMP**

P.O. BOX 7216  
Boca Raton, FL 33431

**BRITAIN AND COMMONWEALTH**



**Germany Philatelic Society, Inc.**

**CHAPTER 23 for CENTRAL FLORIDA**

meets the second Sunday of each month in Lakeland  
**Visitors are always welcome.**

We will be glad to provide help and information in the disposal  
of all types of German material.

Our club normally holds meetings on the second Sunday of the  
month at 2 P.M. at St. Paul's Lutheran Church, 3020 S. Florida Ave.,  
Lakeland, Florida.

For more information Contact: **MASON CURRAN JR.**  
10095 60th Court N.  
Pinellas Park, FL 33566  
813-544-6913



PANPEX '89

CIVIC CENTER  
PANAMA CITY, FL.

MARCH 17-19, 1989

Stamp Exhibit & Dealer Bourse

## TRIPLE 'S'

PROUDLY SERVING

Postal Historians, Collectors of Foreign  
Old Confederate and Classic U.S. Covers.

WE BUY AND SELL OLD U.S., FOREIGN  
AND CONFEDERATE COVERS.

P.O. BOX 224, URBANA, OH 43078

PHONE: 513 - 653 - 8094

## U.S. REVENUES BACK-OF-THE-BOOK OUTSTANDING STOCK

- Early U.S. Stamps
- Revenues
- Match/Medicine
- Documentaries
- Proofs & Essays
- Officials
- Cinderellas
- Tax Paid

Let us help you build your "special" collection.  
Send for your **FREE** copy of our latest Net Price Sale!  
Want Lists Invited.

## GOLDEN PHILATELICS

Myrna Golden • Jack Golden  
(516) 791-1804

Post Office Box 484  
Cedarhurst, New York 11516



**RICARDO DEL CAMPO**  
14 NE. 1st Ave., Suite 901  
Miami FL 33132  
305-373-6895



ASDA

APS

## THE TIN CAN MAIL ADVENTURE

by Janet Klug

When looking at a Tin Can Mail cover, you might only see a gaudy envelope plastered with colorful cachets. But Tin Can Mail collectors see more. We see swaying palm trees, a white-suited copra trader standing on shore, powerful built Polynesians paddling a dugout canoe through turbid surf, and a glaringly white, smoke-spewing steamer passing on the horizon. We see adventure.

The first Tin Can Mail was in 1882. In that year Williams Travers, a copra trader, took up residence on the island of Niufo'ou. Travers had virtually no communication with anyone outside the small island community. So he sent a message to one of the steamers that passed nearby on the Fiji-Samoa route and asked the captain to bring his mail out on the next voyage. The captain agreed.

So the next time the ship came within hailing distance of Niufo'ou, Travers quickly sent one of the island's strongest swimmers out to meet the ship. The captain wrapped Travers's letters up in oilcloth and lowered them overboard to the swimmer who returned them to the island. Eventually it evolved that the letters would be soldered up in ship's cracker tins, hence the island became known to seamen as "Tin Can Island".

By the time the 1930's arrived, Tin Can Island had gained some notoriety with cruise ships. Watching the Tin Can Mail exchange was probably a welcome diversion from shuffleboard for the passengers. Around this time yet another copra trader Walter George Quensell, began applying myriad rubber-stamped markings to the covers, leaving no doubt as to the method of mail delivery.

In 1931, the swimmer mail delivery ceased when a shark ate one of the swimmers. After that tragic occurrence the islanders put into service one of their outrigger canoes. This was still quite hazardous because of dangerous swells which always surround Niufo'ou.

The late 1930's is considered Tin Can Mail's "golden era". Many cruise ships added Niufo'ou to their itineraries and tens of thousands of covers made their way into collectors' hands.

In September, 1946, volcanic Niufo'ou blew up. While no lives were lost, the Tongan government deemed it prudent to evacuate the island. Niufo'ouans who were resettled elsewhere were unhappy and petitioned to be returned to their own island. In 1962, this wish was granted and Tin Can Mail service was resumed. Twenty years later an airstrip was built on the island, ending the need for Tin Can Mail.

For more Tin Can Mail adventures, please stop by the Tonga/Tin Can Mail Study Circle table, or write Lee Roberts, Membership Chairman, P.O. Box 4317, Napa CA 94558.

- We specialize in...*
- U.S. & Worldwide Lots & Collections
  - Pre-1945 U.S. First Day Covers
  - Premium U.S. Mint Sheets
- Priced at Wholesale prices!*

## THE BROWSE HOUSE

Phone 904-672-1673  
P.O. Box 421 Holly Hill, FL 32017

## LATIN AMERICA

WANT LIST OR APPROVAL SERVICE  
FREE PRICE LISTS  
AVAILABLE

*Best Wishes for FLOREX  
or write*

**STARFIRE**

P.O. Box 13754, Orlando, FL 32809

SEE US AT BOOTH 52



## CLASSIC STAMP CO.

- STAMPS AND COVERS
- POSTAL HISTORY
- APPRAISAL-PURCHASE
- CONSULTATION
- SPECIALIZED AREAS

**RICHARD FRIEDMANN**  
371 - 19th Street  
Atlantic Beach, Fl. 32233

APS, GPS, APC

CONGRATULATIONS

FLOREX '88

JOHN C. OLSON

Table 43

**FREDRICK W. WULFF  
LTD.**

Altamonte Springs  
Florida

See  
Roger Fischer

at  
Table 15  
for

U.S. Covers &  
Collections

**HARRIS/ELLENBURG**

Glen Echo, Md.

See Table 20

for

Us & Worldwide  
Covers

COMPIMENTS OF

**ASIA PHILATELICS**

Table 39

**CENTRAL  
FLORIDA  
STAMP  
CLUB**

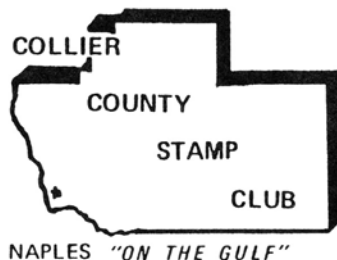


**Is proud to host  
FLOREX '88**

When in Central Florida, come visit our club.

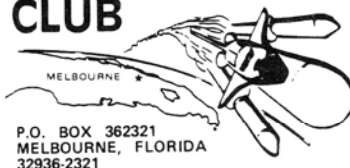
- \* We meet the 1st & 3rd Thursday 7:30-9:30 p.m.
- \* Buy, sell, or trade; six auctions per year.
- \* Share information with knowledgeable philatelists.
- \* Make new friends and enjoy yourself.
- \* Visitors always welcome!

Now meeting at Lake Island Recreation Center in Winter Park.  
450 Harper Ave. Near Fairbanks and US 17-92 behind Burger King.  
Contact Steve Patrick at 889-0528 for more information.



**VISIT  
NAPLEX '89'**  
**March 11 & 12 1989**  
**Naples Depot**

**MISSILE STAMP  
CLUB**



Meets the 1st Wednesday  
and 3rd Tuesday of each  
month at the U.S.P.S.  
Carrier Annex Bldg on  
the corner of Seminole  
and Elizabeth Streets in  
Melbourne, Florida.

**\*Visitors always Welcome\***

**FLORIDA FEDERATION  
OF STAMP CLUBS  
MEMBERSHIP**

**BAY COUNTY STAMP CLUB**

303 Alexander Drive, Lynn Haven, FL 32444

**BOCA RATON STAMP CLUB**

P.O. Box 2789, Boca Raton, FL 33427

**CAP TOWNSEND STAMP CLUB**

48 Dogwood Court, Safety Harbor, FL 34695-4639

**CAPE CORAL STAMP CLUB**

P.O. Box 42, Cape Coral, FL 33910

**CENTRAL FLORIDA STAMP CLUB**

1302 Lake Shore Drive, Orlando, FL 32803

Meeting at Lake Island Recreation Center

**CENTURY VILLAGE WEST STAMP CLUB**

112 Brighton C, Boca Raton, FL 33434

**CENTURY VILLAGE EAST STAMP CLUB**

2028 Oakridge D, Deerfield Beach, FL 33442

**CITRUS AREA STAMP ASSOCIATION**

1601 N. Florida Avenue, Hernando, FL 33518

**CLEARWATER STAMP CLUB**

P.O. Box 5442, Clearwater, FL 33518

**COLLIER COUNTY STAMP CLUB**

478 First Avenue South, Naples, FL 33940

**CRESTHAVEN STAMP CLUB**

Meeting at West Dudley Center

2625 Dudley Dr. W., West Palm Beach FL 33406

**CUBAN PHILATELIC SOCIETY**

P.O. Box 450207, Miami FL 33245-0207

**DERAY BEACH STAMP CLUB**

14876 Sunnyview Lane, Delray Beach, FL 33446

**FIRE SERVICE IN PHILATELY**

P.O. Box 3011, Rotunda West, FL 33947

**FLORIDA CHAPTER FIVE ASDA**

1250 Court Street, Clearwater, FL 33616



Best wishes to Florex '88

**HALIFAX AREA PHILATELIC SOCIETY**

P.O. Box 1361, Ormond Beach, FL 32075

MEETS	LOCATION	Contact Person
2nd & 4th Fridays	Holly Hill Club House	Otto Pummer
7:30 P.M.	1065 Daytona Ave	(904)-767-7452

*Visitors always welcome*



**BLACKJACK**  
**TRADING COMPANY**  
PHILATELIC INVESTMENTS

**CHUCK HANSELMANN**

\* US & FOREIGN STAMPS

POSTAL HISTORY

COVERS

PAPER AMERICANA

ESTATE APPRAISALS

RES: (803) 782-6963

BUS: (803) 788-3139

**EDWARD F. PALMER**

DEALER IN POSTAGE STAMPS  
BUY-SELL-TRADE-APPRAISE  
COLLECTIONS A SPECIALTY



P.O. Box 23388  
Ft. Lauderdale, FL 33307  
(305) 565-8938

**We BUY and SELL the World**

**\*\*\* Stamps & Covers\*\*\***

FREE Philatelic gift for signing up for our monthly list of  
collections, lots, sets, and singles! Stop by BOOTH 13

**Philatelic Enterprises**

Box 3580 Peoria, IL 61614

(309) 688-3454

**MEMBERSHIP continued**

**FLORIDA STAMP DEALERS ASSOCIATION**

P.O. Box 4585, Clearwater, FL 34618

**FLORIDA FIRST COAST STAMP CLUB**

P.O. Box 353277, Palm Coast, FL 32035-3277

**FLORIDA PRECANCEL CLUB**

2901 Revere Place, Deland, FL 32720

**FT. LAUDERDALE STAMP CLUB**

4541 N.W. 23 Street, Lauderdale, FL 33313

**GERMAN PHILATELIC SOCIETY #7**

2710 S.W. 15 Street-CB58, Delray Beach, FL 33445

**GERMAN PHILATELIC SOCIETY CENTRAL FLORIDA #23**

10095 60th Ct. North, Pinellas Park, FL 33565

**GOLD COAST STAMP CLUB**

P.O. Box 111, Deerfield Beach, FL 33443

**HALIFAX AREA PHILATELIC SOCIETY**

P.O. Box 1361, Ormond Beach, FL 32075

**HOLLYWOOD STAMP CLUB**

2030 Polk Street, Hollywood, FL 33020

**INDIAN RIVER STAMP CLUB**

P.O. Box 842, Vero Beach, FL 32960

**JACKSONVILLE STAMP COLLECTORS CLUB**

214 Clay Street, Jacksonville, FL 32202

**MANATEE STAMP CLUB**

4818 Commonwealth Road, Palmetto, FL 33561

**MARGATE STAMP CLUB**

P.O. Box 8142, Coral Springs, FL 33065

**MISSILE STAMP CLUB**

P.O. Box 362321, Melbourne, FL 32936-2321

**NEW PORT RICHEY STAMP CLUB**

P.O. Box 684, New Port Richey, FL 34291-0684

**PENSACOLA PHILATELIST SOCIETY**

12346 Ailanthus Drive, Pensacola, FL 32506

**PORT CHARLOTTE STAMP CLUB**

P.O. Box 3645, Port Charlotte, FL 33949-3645

THE SOUTH MIAMI STAMP CLUB

WELCOMES YOU!

WEEKLY MEETINGS  
THURSDAY EVENINGS  
7:00 PM - 9:00 PM

SILENT AUCTION EVERY MEETING  
DOOR PRIZES  
TRADING & BARGAINING

SUNSET CONGREGATIONAL CHURCH  
9025 S.W. 72 STREET  
MIAMI, FL. 33155  
(REAR OF BLDG.)

*West Volusia Stamp Club*

**MEETINGS AT**

Faith Evangelical Lutheran Church  
509 E. Pennsylvania Ave., DeLand, Florida

**MEETINGS HELD**

1st & 3rd Tuesdays at 7:00 p.m.  
2nd & 4th Tuesdays at 2:00 p.m.

SPONSOR OF THREE BEN FRANKLIN STAMP CLUBS

FOR ADDITIONAL INFORMATION CALL:

(305) 574-7535  
(904) 738-5670  
(904) 789-3215

**MEMBERSHIP continued**

**PORT ST. LUCIE STAMP CLUB**

274 N.E. Solida Drive, Port St. Lucie, FL 33452

**RIDGE STAMP CLUB**

1925 Central Avenue #149, Lakeland, FL 33803

**SARASOTA PHILATELIC CLUB, INC.**

P.O. Box 3553, Sarasota, FL 34230

**SCANDINAVIAN COLLECTORS CLUB**

P.O. Box 2533, Clearwater, FL 34617

**SILVER SPRINGS SHORES STAMP CLUB**

12 Silver Way, Ocala, FL 32672

**SOUTH MIAMI STAMP CLUB**

9025 S.W. 72 Street, Miami, FL 33155

**ST. AUGUSTINE YMCA STAMP CLUB**

P.O. Box Y, St. Augustine, FL 32085-1336

**ST. PETERSBURG STAMP CLUB**

P.O. Box 546, St. Petersburg, FL 33731

**SUNRISE STAMP CLUB**

P.O. Box 130092, Sunrise, FL 33301

**TAMPA COLLECTORS CLUB**

8314 W. Pocahontas Street, Tampa, FL 33615

**TITUSVILLE-MOONPORT STAMP CLUB**

P.O. Box 6071, Titusville, FL 32782

**UNIVERSITY CITY STAMP CLUB**

P.O. Box 1572, Gainesville, FL 32602

**VENICE STAMP CLUB**

P.O. Box 1501, Venice, FL 34284-1501

**WEST FLORIDA STAMP CLUB**

205 Hughes Street, Ft. Walton Beach, FL 32548

**WEST VOLUSIA STAMP CLUB**

Meeting at Faith Lutheran Church

509E Pennsylvania Avenue, DeLand FL 32720

**WINTER HAVEN STAMP CLUB**

1435 Drexel Avenue NE, Winter Haven, FL 33881

### H & S ROGG

- \* Covers & Stamps \* Worldwide
- \* United States \* Kiloware Mixtures

*WE ARE ALWAYS ACTIVE BUYERS OF  
STAMPS - COINS - COVERS*



P.O. Box 1076  
Port Richey, FL 34673-1076  
(813) 848-7697



### Starnes Stamps

602 South Maple Street  
Winchester, KY 40391  
(606) 744-9083

Good stock of —

- Revenues, federal & state
- U.S. & Foreign
- Covers
- Etc., Etc.

*"A Little Bit of Everything"*

Reasonably Priced

Come See Us

Jane & Mac Starnes

### WHEN in NAPLES, FL...

Stop by and browse through  
our large selection of U.S. &  
Foreign Stamps, Plate Blocks,  
First Day Covers, Worldwide  
& Naval Covers.

### NEW ENGLAND STAMP

643 Fifth Ave. South  
Naples, FL 33940  
813-262-6226



Established 1893



STAMP COLLECTIONS  
BOUGHT - SOLD - APPRAISED

### WARD D. MORTON

FRANCE

Booklet Panes

AUSTRIA



GERMANY

Souvenir Sheets

SCANDINAVIA

P.O. BOX 174, SUMMERFIELD, FL. 32691

Collection & Accumulation Specialists  
*WE BUY STAMP COLLECTIONS & RELATED MATERIAL*

### PARK BLVD. STAMPS

K. V. Jensen

10 - 5:30 or  
By Appointment  
(813) 544-3533

4922 73rd Ave. N.  
Pinellas Park, FL 33565

### LIPTON-BANAS

U.S. SINGLES, PLATE BLOCKS & COVERS  
EXTENSIVE STOCK

SEE US AT BOOTH 14

### Court Street Stamp & Coin Shop

1250 COURT STREET  
CLEARWATER, FLORIDA 34616  
TELEPHONE (813) 442-5784

BRITISH COMMONWEALTH

U. S. & Foreign Stamps

A.S.D.A. — F.S.D.A. — F.U.N. — A.P.S.



### TROPICAL STAMPS

BUYING & SELLING

*Covers - Single Stamps - Errors - Collections  
of the  
UNITED STATES*

**"PAYING TOP PRICES!!"**

P.O. Box 6261, Ft. Lauderdale, Florida 33310

**\*\*BUY - SELL - TRADE\*\***

**MICHAEL**



I SPECIALIZE IN U.S. POSTAL CARDS  
ALSO: FLORIDA POSTAL HISTORY,  
U.S. MINT AND USED STAMPS,  
REVENUES, FDC'S, SPACE  
COVERS, POSTAL STATIONERY

P.O. BOX 6130A  
TITUSVILLE, FL. 32782

APS, FSDA, UPSS,  
AFDCS, SU

**Victoria Stamp Company**

British Empire Exclusively - Est. 1962



Phoebe A. MacGillivray  
P.O. Box 745 Ridgewood, N.J. 07451  
(201) 652-7283



**MOLNAR STAMP & COIN**

ONE OF SARASOTA'S LARGEST SELECTION OF:  
STAMPS COVERS AND POSTCARDS —

— U.S. & FOREIGN  
SUPPLIES & ACCESSORIES  
— FREE APPRAISALS —

WE BUY STAMPS COINS  
COVERS POSTCARDS COLLECTIONS  
"LARGE OR SMALL... WE BUY THEM ALL"

TOTAL INTEGRITY IN  
DOWNTOWN SARASOTA

**365-5415**

BUYING AND SELLING  
1553 MAIN STREET



APS



**Jerry Siegel**

Stamps for Collectors  
Bought, Sold and Appraised  
(305) 472-3913  
P.O. Box 290455  
Davie, FL 33329

200th Anniversary of  
the Inauguration of  
George Washington  
as our 1st President

**A.P.S.  
WORLD SERIES  
OF  
PHILATELY EXHIBITION**



**STAMPOREE '89**

**APRIL 28, 29, 30, 1989**

Rolling Hills Hotel and Resort  
3501 West Rolling Hills Circle  
(S.W. 36th Street & University Drive)  
Davie, Florida 33328

**SPRING MEETING OF THE FLORIDA FEDERATION OF STAMP CLUBS**

HOSTING

THE CUBAN PHILATELIC SOCIETY OF AMERICA  
and other societies

ADMISSION: FREE

BOURSE: 30 DEALERS

2500 PAGES OF COMPETITIVE STAMP EXHIBITS  
A.P.S. Accredited Judges Panel plus Critique

U.S.P.S. Postique — Complete Latest Issues

Philatelic Slide Programs Daily

Public Postal History Auction, Friday Evening, April 28  
by David G. Phillips Co. Inc.

Children's Exhibits and Slide Programs Daily. Free Stamps For Kids.

Special "Low" Hotel Rates for Stamporee Attendees.

Additional Information Available From

STAMPOREE '89  
P.O. Box 130092  
Sunrise, FL 33313-0001

Sponsored by Southeast Florida Stamp Exhibitions, Inc.

FLORIDA STAMP DEALERS ASSOCIATION, INC.

**F**irst in

**S**ervice.

**D**ependable

**A**lways.



For information on one of the nation's  
most active stamp dealers associations,  
including a new 1989 show,

CONTACT

Randy Savedow  
Membership Chairman  
P.O. Box 421  
Holly Hill, FL 32017