

FLOREX 94

Florida Federation of Stamp Clubs



CELEBRATING THE HOLIDAYS
FLORIDA STYLE

THE 46TH
ANNUAL CONVENTION OF
THE FLORIDA
FEDERATION
OF STAMP
CLUBS



ORLANDO EXPO CENTRE
NOVEMBER 18-20, 1994

STAMPOREE STAMP EXPO 95 MAY 19, 20 & 21, 1995

AN AMERICAN PHILATELIC SOCIETY
WORLD SERIES OF PHILATELY
CHAMPIONSHIP EXHIBITION

SPRING MEETING OF THE FLORIDA FEDERATION OF STAMP CLUBS

'95 SHOW THEME:
50TH ANNIVERSARY OF WORLD WAR II
AND
150TH ANNIVERSARY OF FLORIDA'S STATEHOOD

*SPECIAL COVER AND CANCEL KIDS EXHIBITS AND FREE STAMPS
SPECIAL HOTEL RATES FOR ATTENDEES BOURSE 30+ DEALERS
U.S. POST OFFICE ON SITE FREE PARKING AND ADMISSION
PUBLIC AUCTION FRIDAY NIGHT BY DAVID PHILLIPS INC.

2500 + PAGES OF COMPETITIVE STAMP EXHIBITS
A.P.S. ACCREDITED JUDGES PANEL PLUS CRITIQUE

TO BE HELD:
THE JUPITER BEACH RESORT
FIVE NORTH A1A
JUPITER FLORIDA 33477-5190

CONTACT:
HARRY R. JOHNSON SR.
GENERAL CHAIRMAN
PO BOX 16843
WEST PALM BEACH FL 33416-6843



*Florida Federation
of Stamp Clubs, Inc.*

FLOREX '94

TABLE OF CONTENTS

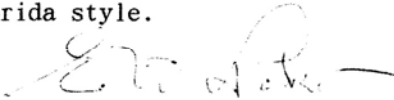
	PAGE
FFSC President's Message	2
FLOREX Chairman's Welcome	3
Schedule of Events	4,5
Exhibit Judges	7
Exhibit Awards	9
List of Exhibits	11,13,15,17
Tonga/Tin Can Mail Study Circle	19
Floor Plan	20,21
SAS/Oceania	23,25
Florida Postal History Society	25
Show Dealer Listing	27, 29, 31
Collect Tonga	33,35
Member Clubs of the FFSC	37-39

Welcome to FLOREX 94 !

As President of your Florida Federation of Stamp Clubs, I extend a hearty welcome to your show, FLOREX 94. I would like to extend a hearty and warm Florida welcome to members of visiting societies, SAS/Oceania, and the Tonga/Tin Can Mail Study Circle.

I hope you will get a pleasant start on the Holidays Florida style.

Sincerely,


E.W. Parker, President
Florida Federation of Stamp Clubs

Wayne Carter	Wade Beery	John Shirley
Vice President	Secretary	Treasurer

Regional Directors

Charles Winney, Jr	Northeast
Frederick C. Dietz	Northwest
William C. Bomar	Central
Carl Burnett	S. Central
Gilbert Lopes	West Coast
George Athens	Southwest
Stewart Cohen	Southeast
Carlos San Martin	Southern

Jack Harwood	Mrs. Mickey Gerhardt
Immediate Past President	Federation Historian

Bart Billings Editor, THE FLORIDA PHILATELIST

WELCOME TO FLOREX '94

Malo e leile and a warm welcome to the FLOREX '94 and the Sunshine State!

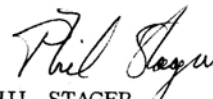
FLOREX is fortunate in having the following guest societies meet with us this year:

Society of Australasian Specialists/Oceania
Tonga / Tin Can Mail Study Circle

along with our own Florida Postal History Society and a regional meeting of the American Airmail Society.

Our thanks to the Florida Stamp Dealers Association for donating the Grand Award - A one ounce U.S. Eagle gold bullion coin.

I would like to add my personal thank you to the committee chairmen listed below. Direct your complaints to me and your complements to them. To all members of the Florida Federation of Stamp Clubs and our guests, let's enjoy the show!


PHIL STAGER
General Chairman, FLOREX '94

Assistant Chairman	Phil Fetting
Exhibits & Awards	Patricia A. Siskin
Bourse	Barry Savedow
Finance	John Shirley
Judges	Clyde Jennings
Cachet & Souvenir Card	Stephen Patrick
Youth	Lewis Etherton

SCHEDULE OF EVENTS

All Meetings are in the Marriott Hotel, 2nd floor; please see posted schedule for room assignments and any changes.

FRIDAY, NOVEMBER 18

- 8:00 am Judges Breakfast . Livingston St.Cafe
- 10:00 am SHOW OPENS Expo Centre
- 10:00 am Auction Lot Viewing .. Lake Dot Room
Dave Phillips Auction
- 2:00 pm General Meeting AAMS Sabal Room
- 3:00 pm Members Auction AAMS Sabal Room
- 6:00 pm SHOW CLOSES
- 7:00 pm Dave Phillips Auction .. Amelia Room

SATURDAY, NOVEMBER 19

- 9:00 am FFSC Board Meeting Magnolia A
- 10:00 am SHOW OPENS Expo Centre
- 10:00 am SAS/Oceania Meeting Amelia Room
- 11:00 am FFSC General Meeting ... Magnolia A
- 1:00 pm Tonga/Tin Can Meeting .. Amelia Room
- 1:00 pm FL Postal History Soc .. Magnolia A
- 2:00 pm AAPE Seminar Magnolia A
- 3:00 pm Judging Critique Magnolia A
- 6:00 pm SHOW CLOSES
- 6:30 pm Cash Bar Opens Magnolia A & B
- 7:00 pm Awards Banquet Magnolia A & B

SCHEDULE OF EVENTS (contd)

SUNDAY, 20 NOVEMBER

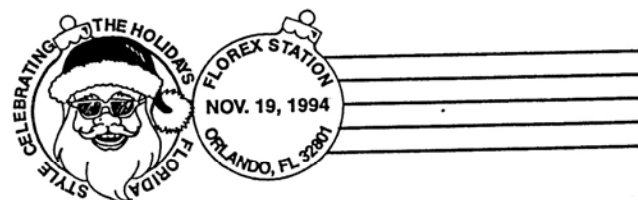
- 8:00 am FSDA Breakfast Ballroom A
- 10:00 am SHOW OPENS Expo Centre
- 2:00 pm Exhibit Area Closes Expo Centre
Hall 600
- 4:00 pm SHOW CLOSES * SEE YOU NEXT YEAR!

FLOREX '95 will be held November 17-19, 1995 and will host the annual convention and meeting of the Germany Philatelic Society.

FLOREX '95 will also premier a Platinum Class competitive class of 80 frames. Exhibits in the new Platinum Class must have received either the Champion of Champions Award or an FIP international Gold medal. Get ready to view some world class exhibits!

FLOREX '95 will be honored by the Bureau of Engraving and Printing who will bring **both** of their exhibits - *Unfinished Masterpieces*, *Stamps that Never Were* and *100 Years of Stamp Production*. This is probably the only time that both exhibits will be on display at the same time.

SEE YOU IN 1995!



schwender

Box 96 • Venice, Florida 33595 •



CLASSIC STAMP CO.

- STAMPS AND COVERS
- POSTAL HISTORY
- APPRAISAL-PURCHASE
- CONSULTATION
- SPECIALIZED AREAS

RICHARD FRIEDMANN
371 - 19th Street
Atlantic Beach, Fl. 32233

Table #3

WILLIAM A. FOX

FINE STAMPS

HILTON HEAD, SC

RARE STAMPS AND COVERS

Service, Courtesy, Confidence

ASDA
NEW YORK
PTS
LONDON

Gordon
McHenry, Inc.
Phone (813) 966-5563
Box 117
Osprey, FL 33559



THE JURY

Roger G. Schnell - Ft. Lauderdale, FL.
Chairman of Jury. Former Champion of
Champions winner; commissioner to PhilaKorea
94, President of Scandinavian Collectors Club.

Janet Klug - Pleasant Plain, Ohio
Past president and founder of Tonga & Tin Can
Mail Study Circle; editor of Clermont
Collector.

Jamie Gough - Santa Ana, CA
Former Champion of Champions winner;
international gold medal winner; special
expertise in postage dues of world.

Jim Mazepa - Oak Park, IL
Commissioner to POLSKA 94 and to CAPEX 96.
Gold medal winning exhibits of Mexico and
Poland.

Chuck LaBlonde - Chelmsford, Mass.
Noted author, gold medal winner, and
specialist in Switzerland and WWII censored
mail. A first time visitor to FLOREX.

Gene Walters - Mt. Angel, Oregon.
Apprentice; current President of Tonga & Tin
Can Mail Study Circle.

JAMES STAMP COMPANY

BUY • SELL • APPRAISALS • INVESTMENTS



DR. RAYMOND J. ZIEGLER

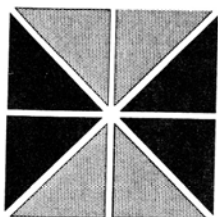
MEMBER: F.S.D.A. & A.P.S.
P.O. BOX 2814, LAKE LAND, FL

Table #5

VENTURA GALLERIES

STAMPS FOR COLLECTORS

STAMFORD, CONNECTICUT



Steven G. Zirinsky
ASDA, PTS, APS

- Australia, NZ & Dep
- Pacific Islands
- Canadian Revenues

Welcome SAS/O & T/TCM

PO Box 49, Ansonia Station
New York, NY USA 10023
Tel: 212/874 3141
Fax: 718/937 5515

ASDA APS

BEJJCO, INC.

Arnold H. Selengut

WORLD WIDE &
UNITED STATES

RARE STAMPS

including
CLASSICS, DUCKS, B-O-B,
INVERTS & S/S
with an especially
DEEP STOCK OF JAPAN
and also

PRECANCELS

PO Box 16681
Temple Terrace, FL 33687
PSS (813) 980-0734 FSDA

FLOREX '94 - EXHIBIT AWARDS

Grand Award, Reserve Grand, Gold, Vermeil, Silver,
Silver/Bronze, Bronze, Three Youth Awards

Florida Stamp Dealers' Association Award

Best exhibit by a member of the Florida Federation of Stamp Clubs

American Philatelic Society

Pre-1900, 1900-1940, Post-1940 Research Awards

American Association of Philatelic Exhibitors

Excellence of Presentation Awards, Creativity Award

American Topical Association Awards

Maurice Apfelbaum Award

Best Exhibit by a first time exhibitor

Postal History Society Award

Modern Postal History Society Award

Best exhibit of 20th century Postal History

Bureau Issues Association

Statue of Freedom Medal

Orlando Postmaster's Award

U.S. Philatelic Classics Society Award

Best exhibit of material from the Classic Period

AeroPhilatelic Federation of the Americas

President's Prize

Puerto Rico Philatelic Society

Raul Gandara Award for excellence in philately

Ingeborg Herst Award

United States Cancellation Club

Charles Root Memorial Award

Michael Rogers Award

Best Asian Exhibit

SAS/Oceana Awards

Appraisals Anything Philatelic

THE STAMP PROFESSOR
 United States and Foreign
 Collections & Accumulations
 Plate Blocks & Singles
 Bought & Sold

John A. Hunter Day 829-6451
 36 Sevilla St. Eve. 471-1549
 St. Augustine, FL 32084 By Appointment Only


LIPTON - BANAS

U.S. SINGLES, PLATE BLOCKS & COVERS
 EXTENSIVE STOCK

SEE US AT TABLE #11

We BUY and SELL the World
 *** Stamps and Covers ***
 See Us at Table #7

PHILATELIC ENTERPRISES
 Box 3580 Peoria, IL 61614
 (309) 688 3454



SUNBELT COVERS
Offering an extended stock of . . .

- First Day Covers
- Hand-painted First Days
- Ship or Naval Covers
- Confederate Covers
- Postal History

If you can't attend the show, we would be happy
 to receive your want list! Write or Call:

SUNBELT COVERS & STAMPS

Phone (803) 772-1964 P.O. Box 2211 Columbia, SC 29202

FLOREX '94 - PHILATELIC EXHIBITS

Frame	Title	Exhibitor
1-10	Polynesian Dependencies: Overview of New Zealand's Pacific "mini-empire." Basic stamps, varieties, rarities, postal history, stationery.	J. Edgar Williams
11-16	New Zealand 1855-1873, the Chalons or Full Face Queens: a comprehensive study of New Zealand's first stamp design.	George Branam
17-26	Penny Dominion of New Zealand: development, varieties papers, overprints, stationery and foreign and domestic uses.	Paul Tyler
27-32	Nivafu'ou/Tin Can Island: stamps and First Day Covers from the first issue in 1983 through 1993.	Floyd Haskell
33-37	New South Wales-The First two issues 1850-59: the regular issues, their use, cancels, forgeries and reprints.	David Vandette
38-47	Allied Intervention in Russia, 1918-25 (excluding U.S. forces): Postal History of post W. W. I Allied intervention in Siberia, North and South Russia.	Alfred Kugel
49-53	Van Dieman's Land Postal History, 1824-1870: rates, routes and marks on covers during Van Dieman's Land period of the colony of Tasmania.	John Cress

Table 16

PHIL BANSNER

PROFESSIONAL PHILATELIST

Box 2529, 2320 HIGHLAND AVENUE
WEST LAWN, PA 19609
(610) 678 5000 FAX 678 5400

Table #15

HARRY GRAETZ

LEAWOOD, KANSAS

STAMPS FOR COLLECTORS

arlington stamp and coin co.

1350 UNIVERSITY BLVD., N.
P.O. BOX 11019
JACKSONVILLE, FLA. 32211
(904) 743-1776

H & S ROGG

* Covers & Stamps * Worldwide
* United States * Kiloware Mixtures

WE ARE ALWAYS ACTIVE BUYERS OF
STAMPS - COINS - COVERS



P.O. Box 1076
Port Richey, FL 34673-1076
(813) 848-7697



54-63

The Half-A-Collection: a showing of the eleven U. S. one-half cent postage stamps and usages.

Jay Jennings

65-69

New Zealand Government Life Insurance Department: stamps and Postal History, 1869-1913.

Allan P. Berry

70-79

Forerunners on German Offices and Colonies: showing the use of German Empire stamps before over-printed stamps were furnished to the offices and colonies.

Ferd Lauber

81-89

New South Wales-The Diadem Series: the issued stamps, proofs, specimens, reprints, forgeries, usage, cancels and rates.

David Vandette

90-96

Stamp Centenaries and Postal History: covers, stamps and autographs of the 100th anniversaries of the first stamps 1840-50.

Leo Meyenberg

97-100

1897 One Penny of Tonga: a study of varieties and postal usage illustrated with stamps and covers.

Larry Benson

101-110

1cent Washington and Franklin Heads 1908-1922: the evolution of the Bureau Issues throughout the Washington-Franklin era.

Harry A. Roark

113-121

Austria and Hungary Pre-adhesive Covers: rates, routes and markings of pre-stamp covers of Austria and Hungary.

Howard W. Moser

**AMERICAN
STAMP
AND
COIN**



John H. Smith
Buying and Selling



P.O. Box 10610
St. Petersburg Florida 33733-0610
(813) 327-9745

Table #17

**STANLEY C. JAMESON
EMPIRE COMPANIES**

P.O. Box 624
St. Petersburg, FL 33731
813-526-5203



THE CLASSIC COLLECTOR

P.O. Box 6277, Station J, Ottawa, Canada K2A 1T4
TELEPHONE: (613) 722-1621

Court Street Stamp & Coin Shop
1250 COURT STREET
CLEARWATER, FLORIDA 34616
TELEPHONE (813) 442-5784
BRITISH COMMONWEALTH
U. S. & Foreign Stamps
A.S.D.A. — F.S.D.A. — F.U.N. — A.P.S.



- 122-128 BATS - the flying mammals:** Thomas Lera
philatelic showing of the highly sophisticated, gentle, beneficial but least understood and most maligned of all mammals-the bat.
- 129-138 Minnesota Classic and Neo-Classic Precancels:** Allan Wichelman
philatelic study includes early bar types, electroplates, hand-stamps, local devices and precanceled postal stationery.
- 139-143 United States Precancels, 1870's-1990's:** Arnold Sellengut
methods of collecting precancels concentrating on the scarce and unusual.
- 145-154 Confederate Florida Postal History:** Deane R. Briggs
Confederate Florida usage of U.S. postage including adhesives; manuscript, hand-stamped and provisional stampless; and Union occupation usages.
- 155-159 U.S. Officials Postal History 1873 to 1884:** Bob Markovits
use of Official stamps, including registration rates, foreign mail, treaty rates, combination and First Day Covers.
- 161-167 Ingenuity in Adversity - Independent State and Confederate Mail:** Alexander Hall
a study of the ingenuity of the Southern postmasters and citizenry, who maintained a viable postal system during a time of great adversity.
- 168-175 Steamboats and the U. S. Mail:** John A. Eggen
a study of the impact of steamboats on the U. S. Postal system 1810 through 1865.

Starnes Stamps

602 South Maple Street
Winchester, KY 40391
(606) 744-9083

Good stock of —

- Revenues, federal & state
- U.S. & Foreign
- Covers
- Etc., Etc.

"A Little Bit of Everything"

Reasonably Priced

Come See Us

Jane & Mac Starnes

GPS ASDA APS

A & H STAMPS OF MINNESOTA

Specialists in:—
Germany—All areas
Worldwide Covers
U.S. B.O.B.
French Colonies

P.O.Box 20289
Bloomington, MN 55420
612-835-9449

MOLNAR STAMP & COIN

ONE OF SARASOTA'S LARGEST SELECTION OF:
STAMPS COVERS AND POSTCARDS —

— U.S. & FOREIGN
SUPPLIES & ACCESSORIES
— FREE APPRAISALS —
WE BUY STAMPS COINS
COVERS POSTCARDS COLLECTIONS

"LARGE OR SMALL . . . WE BUY THEM ALL"

365-5415

TOTAL INTEGRITY IN BUYING AND SELLING
DOWNTOWN SARASOTA 1553 MAIN STREET

S. GEORGE TRAGER
STAMPS & COINS FOR COLLECTORS



301 41ST STREET
MIAMI BEACH, FLORIDA 33140
(305) 531-6727

177-182 (Non-competitive) Venereal Dr. Zorba

Disease: Gonorrhea, Syphilis and AIDS: a study of three venereal diseases through the medium of philately.

183-190 The Exporta Definitive Issue Philip Angel

of Mexico, 1975-1992: a study of all the varieties of this issue including many rarities.

191 (Non-competitive) QUACK! Anonymous

QUACK! a look at some old and new medical nonsense.

193-195 Hitler Birthday Cancels: a Anonymous

complete collection of all special cancellations honoring Hitler's Birthdays while Chancellor of Germany, plus "forerunners."

LATE ENTRY Lindbergh — The Lone Eagle Jack Beattie

A record of flights of Charles A. Lindbergh, Jr. and how he pioneered the world of aviation.

St. Petersburg Stamp Club



ORGANIZED 1923
INCORPORATED 1955

MEETS EVERY WEDNESDAY 7:30 pm
TRINITY LUTHERAN CHURCH
401 5th ST., N.

Best Wishes to FLOREX

**** BUY - SELL - TRADE ****

M I C H A E L

I SPECIALIZE IN U.S. POSTAL CARDS
 ALSO: FLORIDA POSTAL HISTORY,
 U.S. MINT AND USED STAMPS,
 REVENUES, FDC'S, SPACE
 COVERS, POSTAL STATIONERY

P.O. BOX 6130A
 TITUSVILLE, FL. 32782

APS, FSDA, UPSS,
 AFDCS, SU



APS



Jerry Siegel
 Stamps for Collectors
 Bought, Sold and Appraised
 (305) 472-3913
 P.O. Box 290455
 Davie, FL 33329

U.S. REVENUES

BACK-OF-THE BOOK, OUTSTANDING STOCK

- Telegraphs
- Match/Medicine
- Reds/Greens
- Taxpays



- Proofs/Essays
- Officials
- Possessions
- Classic U.S.

SEND FOR OUR CURRENT NET PRICE SALE

GOLDEN PHILATELICS
 Myrna Golden • Jack Golden
 Post Office Box 484, Cedarhurst, NY 11516
 (516) 791-1804 FAX (516) 791-7846

ARA SEE BSA EPS

We specialize in...

- U.S. & Worldwide Lots & Collections
- Pre-1945 U.S. First Day Covers
- Premium U.S. Mint Sheets

Priced at Wholesale prices!

THE BROWSE HOUSE
 Phone 904-672-1673
 P.O. Box 421 Holly Hill, FL 32017

The Little Club with the Big Long Name:

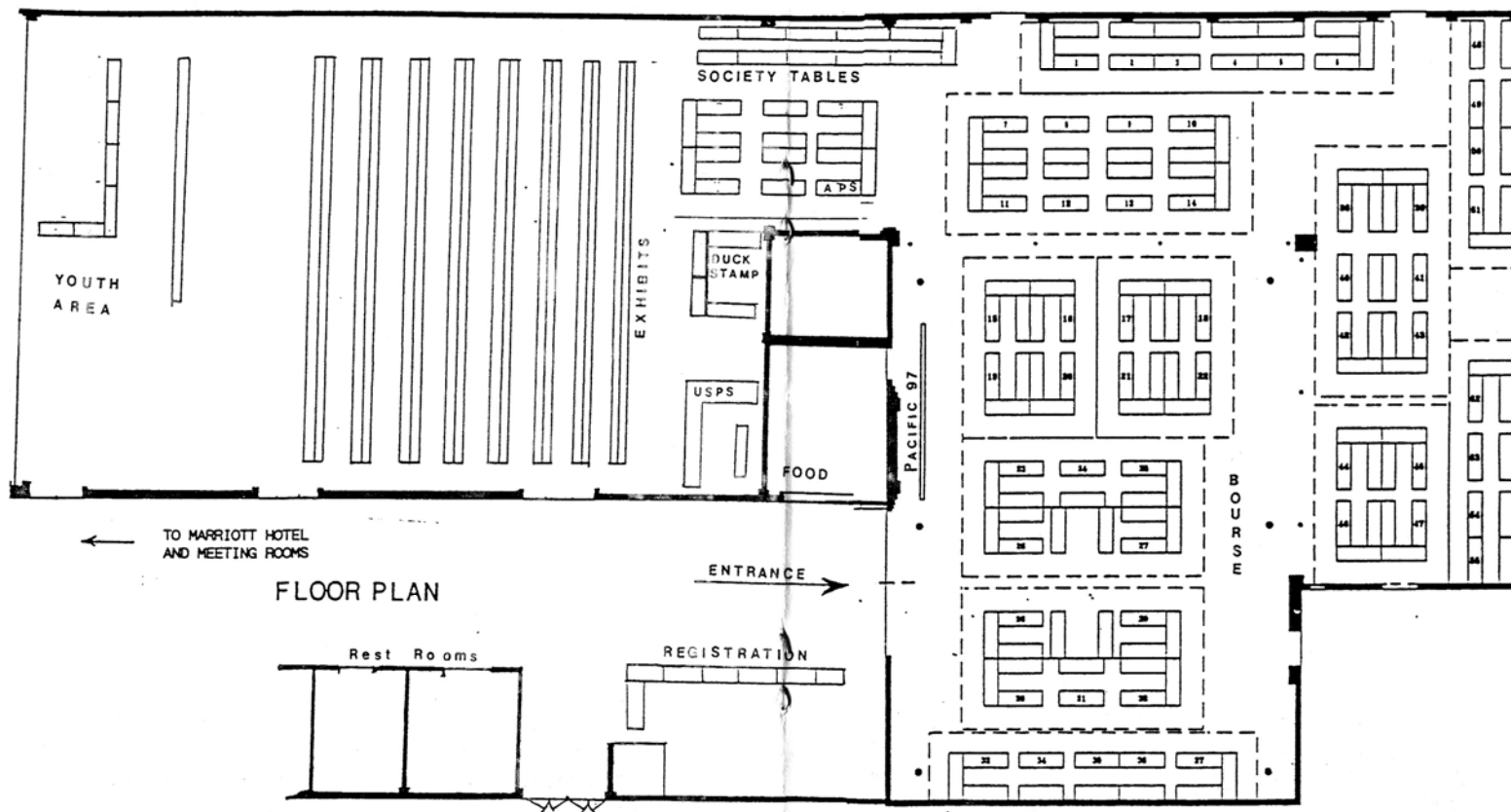
TONGA & TIN CAN MAIL STUDY CIRCLE

Fourteen years ago a not-even-handful of enthusiastic collectors clubbed together to form a study group for Tonga's infamous Tin Can Mail. Very slowly other Tonga collectors were rounded up until enough interest was generated to produce a newsletter.

Today the Tonga & Tin Can Mail Study Circle celebrates its fourteenth anniversary by convening at FLOREX, the second time we have held our annual meeting at this welcoming locale. Our little group has grown to 200 members who reside in more than a dozen countries. We publish an acclaimed journal five times a year. Additionally, we have published handbooks, monographs, and catalogs on various aspects of Tongan philately.

The Tonga & Tin Can Mail Study Circle pioneered the idea of exhibiting by mail - in fact, we are currently running centerfolds of exhibits in issues of *Tin Canner*! The exhibit-by-mail idea has been successfully copied by other organizations.

Whether you are interested in classic issues, postal history, colorful thematics, or philatelic oddities, Tonga has something for you! Come and find out more about Tongan philately and our study group at our annual meeting or at the Club booth. For more information write to our Secretary, Tom Jackson, 121 Mullingar Ct. #1A, Schaumburg, IL 60193.



FLOOR PLAN

Table #30

JOHN OLSON

ORLANDO, FLORIDA

FINE STAMPS AND COVERS
SEE OUR EXCELLENT STOCK OF GERMANY

Table #31

WILLIAM E. BARKER

CLEVELAND, OHIO
ON THE SOUTH COAST OF LAKE ERIE

POSTAL HISTORY

Table #32

ARMSTRONG PHILATELICS

CHATSWORTH, CALIFORNIA

STAMPS FOR COLLECTORS

EARL T. REEDER

ANN FETTIG

A & R STAMP & COIN, INC.



P.O. BOX 420730
KISSIMMEE, FL 34742-0730

AMERICAN PLAZA
1512 W. VINE STREET (US 192)
KISSIMMEE, FLORIDA 34741
STAMPS, COINS, JEWELRY
SUPPLIES & LITERATURE
WE BUY, SELL & APPRAISE



(407) 933-2225

THE SOCIETY OF AUSTRALASIAN SPECIALISTS/OCEANIA

The Society of Australasian Specialists (SAS) was formed in 1936 with the initial goal of studying the philately of the Australian Commonwealth, its territories, and predecessor states. The scope of the organization has expanded to cover the philately of the postal administrations within the 'Water Quarter' of the globe.

Some thirty years later, another America-based society oriented toward South Pacific philately came into being. This unit which became known as Oceania shared similar goals with the SAS. The primary difference was one of editorial approach.

Skeptics doubted that the public would support two such organizations. The presence of the newcomer stimulated the administration of SAS to successfully increase its recruiting endeavor, and the newcomer grew steadily.

A merger of the two societies was inevitable. Today the Society of Australasian Specialists/Oceania (SAS/O) is incorporated, is American Philatelic Society Unit #22, and serves hundreds of members in North America, Europe, the South Pacific, and the Orient. Don't let the word 'Specialists' in the title intimidate you; SAS/O offers something to each South Pacific collector from the fledgling philatelist to the advanced researcher and writer.

The lifeblood of the organization is The Informer, a quarterly publication with emphasis on original articles dealing with stamps, postal stationery, and postal history. The Society's library is large; publications may be borrowed by mail for only the cost of postage.



We Have Moved!!!

To better serve YOU!!

WINTER PARK STAMP SHOP

MICHAEL ROGERS ● ALVIN HINTZ

199 East Welbourne Avenue, Second Floor

Winter Park, Florida 32789

Toll Free Phone: (800) 845-1819

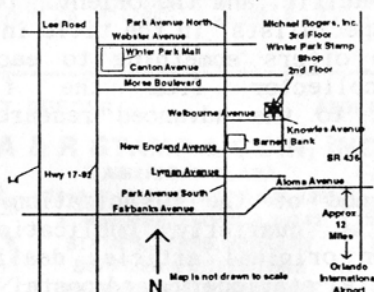
(407) 628-1120--Office

(407) 628-0091--Fax

Specialists in United States & Foreign Philately
with over 16 years experience

Mon - Fri: 10am - 6pm

Sat: 10am - 3pm



SAS/OCEANIA (contd)

The SAS/O sales division is quite popular; members use circuit books to acquire new material and to dispose of duplicates at attractive prices. Frequent mail auctions are also available and contain both general and specialized material submitted by members.

Annual meetings of SAS/O are scheduled in conjunction with national and international shows. Should you wish to learn more about SAS/O, please write the membership chairman: Henry Bateman, Box 4862, Monroe LA 71211 or stop by the Society's table at FLOREX for a warm welcome.

THE FLORIDA POSTAL HISTORY SOCIETY

The Florida Postal History Society was established on November 5, 1992 by a group of philatelists interested in the postal history of Florida. Our group now numbers over 50 members and publishes the *Florida Postal History Journal* semi-annually. The annual meeting is held in conjunction with FLOREX and is open to all interested philatelists. Meetings are also held at STAMPOREE and the Sarasota National Philatelic Exhibition.

An ongoing project of the Society is an update of the *Handbook on Florida Stampless Postal History*. Anyone interested in contributing to this project is welcome.

Membership applications can be obtained from Deane R. Briggs, M.D., 160 East Lake Howard Drive, Winter Haven, FL 33881. Dues are \$10.00 annually and include all publications of the Society.

CLASSIC U.S.

Guaranteed Original Gum, free from defects, no reperfed, regummed, or covered up thins. Very choice material available at competitive prices.

FRENCH POLYNESIA
(Including Imperf & Deluxe s/s)
FRENCH SO. ANTARCTIC
ST. PIERRE & MIQUELON
PEOPLES REPUBLIC OF CHINA
LAOS, KOREA, CAMBODIA,
TOPICALS

*We are active buyers of quality collections
contact for a cash offer*

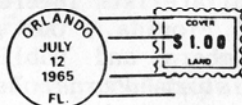


ALBANY STAMP CO.

P.O. BOX 30398
CHARLESTON, S.C. 29417-0398
CONTACT STEVE RADIN AT: 803-766-6396



ASDA AFDCS
FSDA APS USCS
Dealer in
U.S. Stamps and
First Day Covers



Dolphin Covers
Attn: Phil Fettig
P.O. Box 560837
Orlando, FL 32856



6686 OLD TIPTON RD.
MILLINGTON, TN 38053
(901) 872-3780

D. D. WRAY

FOREIGN & U.S. STAMPS
BOUGHT AND SOLD

SHOW DEALER LISTING

TABLE DEALER

- | | | |
|------|------------------------|--------------------|
| ① 1 | GORDON MCHENRY, INC. | Osprey, FL |
| ② 2 | PETER SCHWENDER | Venice, FL |
| ① 3 | WILLIAM A. FOX | Hilton Head, SC |
| ② 4 | CLASSIC STAMP CO. | Atlantic Beach, FL |
| ① 5 | VENTURA GALLERIES | Stamford, CT |
| ① 6 | SUNBELT COVERS | Columbia, SC |
| ② 7 | PHILATELIC ENTERPRISES | Peoria, IL |
| ② 8 | JAMES STAMP CO. | Lakeland, FL |
| ① 9 | STEVEN ZIRINSKY | New York, NY |
| ② 10 | BEJJCO, INC. | Temple Terrace, FL |
| ② 11 | LIPTON - BANAS | N. Miami Beach, FL |
| ① 12 | THE STAMP PROFESSOR | St. Augustine, FL |
| ② 13 | H & S ROGG | Port Richey, FL |
| ① 14 | ARLINGTON STAMP & COIN | Jacksonville, FL |
| ① 15 | HARRY GRAETZ | Leawood, KS |
| ① 16 | PHILLIP BANSNER | West Lawn, PA |
| ② 17 | EMPIRE COMPANIES | St. Petersburg, FL |
| ① 18 | AMERICAN STAMP & COIN | St. Petersburg, FL |
| ② 19 | COURT ST. STAMP & COIN | Clearwater, FL |
| ① 20 | STARNES STAMPS | Winchester, KY |

Table #39

MILLS PHILATELICS

THOMAS MILLS
P.O. Box 221 Rexford, NY 12148-0221

FINE POSTAL HISTORY

PHILATELIC CONSULTANTS

P.O. Box 1775
Darien, GA 31305

PHILIP G. HODGES
ASDA, APS, FSDA, SDAG
(912) 267-0708 (Day)
(912) 437-6985 (Eve)

HERBERT LANGE
(912) 264-0650 (Day)
(912) 635-3803 (Eve)

Table #36

JACKSONVILLE STAMP AND COIN

JACKSONVILLE, FLORIDA

FOR ALL YOUR COLLECTING
NEEDS

8849 LONG POINT, SUITE #5
HOUSTON, TEXAS 77055

(713) 468-0644
(713) 465-1581



Ameen Stamps

WORLDWIDE STAMPS FOR COLLECTORS

RAY C. AMEEN, M.D.

ASDA, APS, TSDA
MEPSI, RCSDA, GPS

SHOW DEALER LISTING

TABLE

DEALER

- | | | |
|----|------------------------------|------------------|
| 21 | THE CLASSIC COLLECTOR | Ottawa, Ont. |
| 22 | MOLNAR'S STAMPS / MRS. DUCKS | Sarasota, FL |
| 23 | S. GEORGE TRAGER | Miami Beach, FL |
| 24 | MICHAEL | Titusville, FL |
| 25 | GOLDLEN PHILATELICS | Cedarhurst, NY |
| 26 | THE BROWSE HOUSE | Holly Hill, FL |
| 27 | JERRY SIEGEL | Plantation, FL |
| 28 | A & R STAMP & COIN, INC. | Kissimmee, FL |
| 29 | WINTER PARK STAMP SHOP | Winter Park, FL |
| 30 | JOHN OLSON | Orlando, FL |
| 31 | WILLIAM E. BARKER | Cleveland, OH |
| 32 | ARMSTRONG PHILATELICS | Chatsworth, CA |
| 33 | ALBANY STAMP CO. | Charleston, SC |
| 34 | DOLPHIN STAMPS | Orlando, FL |
| 35 | D.D. WRAY | Millington, TN |
| 36 | JACKSONVILLE STAMP & COIN | Jacksonville, FL |
| 37 | AMEEN STAMPS | Houston, TX |
| 38 | PHILATELIC CONSULTANTS | Atlanta, GA |
| 39 | MILLS PHILATELICS | Rexford, NY |
| 42 | BOB HART | Jacksonville, FL |

Collection & Accumulation Specialists
WE BUY STAMP COLLECTIONS & RELATED MATERIAL

PARK BLVD. STAMPS

K. V. Jensen

10 - 5:30 or
By Appointment
(813) 544-3533

4922 73rd Ave. N.
Pinellas Park, FL 33565

Table #45

QUALITY INVESTORS

MIDDLETOWN, NEW YORK

HART PHILATELICS

Bob Hart

Member APS • ARA
FSDA • GPS • SDAG

Stamps • Covers
Bought • Sold
Estates Appraised

Specializing in
United States and Revenues
World Revenues
and Germany

P.O. Box 11746
Jacksonville, FL 32239

(904) 642-1439

U.S. FDCs

See us at BOOTH 54

Classic to contemporary,
printed to hand painted, we
stock it all. Nearly **ONE**
MILLION covers in stock!

FREE auction catalog at our
booth!

James T. McCusker, Inc.

U.S. First Day Cover Specialists

P.O. Box 121

Raynham Ctr., MA. 02768

508-822-7787 Fax: 508-822-1230

TOLL-FREE 800-852-0076

ASDA-APS-AFDCS-ATA

SHOW DEALER LISTING

TABLE DEALER

43	A & H STAMPS OF MINNESOTA	Bloomington, MN
44	PARK BLVD. STAMPS	Pinellas Park, FL
45	QUALITY INVESTORS	Middletown, NY
46	EDWARD PALMER	Ft. Lauderdale, FL
47	RUSTCO	Lima, OH
48	COUGHLIN STAMPS	Washougal, WA
49	JIM McGRATH	Port St. Lucie, FL
50-51	NEW ENGLAND STAMPS	Naples, FL
52	BLACK JACK TRADING CO.	Blythewood, SC
53	HOOVER STAMPS	Hoover, AL
54	JAMES T. McCUSKER, INC.	Raynham, MA

SUPPORT YOUR LOCAL STAMP DEALER





TELEPHONE (305) 565-8938
FAX (305) 568-3089

EDWARD F. PALMER

DEALER IN POSTAGE STAMPS
BUY-SELL-TRADE-APPRAISE

MAIL:
P.O. BOX 23308
FT. LAUD., FL 33307

OFFICE:
3499 N.E. 12th TERRACE
OAKLAND PARK, FL
33334

Table #47

RUSTCO

Howard Rust
LIMA, OHIO

Table #49

JIM McGRATH

Port St. Lucie, Florida

STAMPS FOR COLLECTORS



Coughlin's



Ray L. & Cora C. Coughlin, Prop's.

Specializing in US Possessions, Stamps,
Postal Stationery & Postal History, all eras.

US Postal History.

Specialists since 1970 - We Buy - Selling by want lists
orders and attending major shows

P.O. Box 762 Washougal, WA 98671

206-835-7990

COLLECT TONGA FOR A CHALLENGE AND A CHANGE!

PRE STAMP ERA The earliest postal communications in Tonga probably began when the ship DUFF of the London Missionary Society arrived in Tonga in 1797. This expedition failed, and it was not until the Wesleyan missionaries arrived in Tonga in 1824 that regular postal communications with the outside world were instituted. The posts in Tonga depended entirely on irregular shipping and the kindness of sea captains.

EARLY STAMPS The establishment of an organized postal service in Tonga occurred in 1886. The first set of Tongan stamps bore a portrait of King George Tupou I. This set was printed by the Government Printing Office in New Zealand and consisted of four values: 1d, 2d, 6d, and 1/. The stamps soon became inadequate for Tonga's postal needs.

SURCHARGES & OVERPRINTS are rife on the early postal emissions. The first occurred in 1891 when new rates were introduced. A new series of five stamps followed in 1892. In February 1893, King George I died and was succeeded by his great-grandson, George Topou II. Stamps with the new king's portrait were prepared but not released until August, 1895. In the meantime, the 1892 series received all manner of surcharges to cope with postal rate changes and stamp shortages.

KING GEORGE II STAMPS were not popular with the new monarch, and he ordered replacements. The printer reworked the die, but the design was still inadequate. More stamp shortages occurred, and more surcharges appeared.

ENGRAVED STAMPS CAME TO TONGA in 1897 with a new set from de la Rue of London. This basic series remained in use for 56 years, adding only stamps with Queen Salote's portrait. She

Tables 50-51

New England Stamp

4987 Tamiami Trail E.

Naples, FL 33962

Gary Hausin

813 732 8000

Robert Hausin

Come by and see our strong stock of U.S.,
Foreign (sets & singles), Lots and
Collections, and Worldwide Postal History

HOOVER STAMPS

3228 LORNA ROAD, HOOVER, AL 35216

U.S. & FOREIGN STAMPS & COVERS

(205) 822-3724

COMPLETE LINE OF PHILATELIC SUPPLIES

COLLECTIONS
BOUGHT
SOLD
AND APPRAISED

HRS: 10 - 5 DAILY
EXCEPT WED.
C.R. DONALDSON
OWNER

APS

ASDA

Compliments of
DAVID G. PHILLIPS CO., INC.

P.O. BOX 611388

NORTH MIAMI, FLORIDA 33161

PHONE: (305) 895-0470

PUBLISHER OF AMERICAN STAMPLESS COVER
CATALOG

succeeded her father in 1918, but Salote stamps did not appear until 1920.

THE TIN CAN MAIL from the island of Niuafu'ou is one of the most interesting aspects of Tongan philately. It has been interrupted by shark attacks and volcanic eruptions and finally ended with the construction of an airstrip in 1983.

FOILS, HEARTS, ETC. Tonga's postal affairs remained conservative until 1963 when the first gold foil stamps appeared. These were followed by other foil issues in the shape of hearts and maps. Tonga changed almost entirely to self-adhesive freeform stamps in 1968. Some of the more unusual stamps are in the shapes of coconuts, bananas, oil derricks, and diamonds. The self-adhesive feature was very popular with the natives. In 1981, traditional rectangular stamps replaced the freeform stamps. In 1986, Tonga reverted to the traditional gummed and perforated postage stamps. Plans call for the occasional release of self-adhesives, most likely in booklets, for use by island residents.

Please stop by our table for more information on this fascinating area of philately.



APS Affiliate #128



BLACKJACK
TRADING COMPANY
Philatelic Investments

BUYING

ESTATES AND COLLECTIONS
OF STAMPS, COINS,
OLD LETTERS & DOCUMENTS.

If You Have This Type Material
For Sale Please Contact...

CHUCK HANSELMANN
P.O. Box 707, Blythewood, SC 29016
Phone: (803) 754-4954

MEMBER CLUBS

FLORIDA FEDERATION OF STAMP CLUBS

Athens Philatelic Society
P.O. BOX 451 ATHENS GA 30648

Bay County Stamp Club
303 ALEXANDER DRIVE LYNN HAVEN FL 32444

"Cap" Townsend Stamp Club
48 DOGWOOD COURT SAFETY HARBOR FL 34695-4639

Cape Coral Stamp Club
1425 SE 17TH ST CAPE CORAL FL 33990

Central Florida Stamp Club
P.O. BOX 3781 ORLANDO FL 32802-3781

Century Stamp Club of West Palm Beach
113 LAKE TERRY DR WEST PALM BEACH FL 33411

Clearwater Stamp Club
P.O. BOX 5442 CLEARWATER FL 34618-5442

Collier County Stamp Club
18226 CAMELLIA RD FT MEYERS FL 33912

Cresthaven Stamp Club
2889 CROSLY DRIVE W PALM BEACH FL 33415

Cuban Philatelic Society, Inc.
P.O. BOX 450207 MIAMI FL 33145-0207

Delray Beach Stamp Club
1637 PALMLAND DR BOYNTON BEACH FL 33436

Florida Postal History Society
160 E LAKE HOWARD DR WINTER HAVEN FL 33881

Florida Precancel Club
P.O. BOX 256 GOLDENROD, FL 32733-0256

Florida Stamp Dealers Association
P.O. BOX 420730 KISSIMMEE FL 34742-0730

General Francis Marion Stamp Club
8831C SW 94TH LANE OCALA FL 34481

Germany Philatelic Society, #7
2710 SW 15 ST CB58 DELRAY BEACH FL 33445

Germany Philatelic Society, #23
P.O. BOX 2346 PORT CHARLOTTE FL 33949

Golden Triangle Stamp Club
P.O. BOX 931 MT DORA FL 32757

Halifax Area Philatelic Society
P.O. BOX 1361 ORMOND BEACH FL 32175-1361

Highlands Stamp Club
99 RALLY RD AVON PARK FL 33825

Indian River Stamp Club
5920 24TH ST VERO BEACH FL 32966

Jacksonville Stamp Collectors Club
857 S EDGEWOOD AVE JACKSONVILLE FL 32205

Manatee Stamp Club
4818 COMMONWEALTH RD PALMETTO FL 34221

Margate Stamp Club
7400 NW 4TH PLACE MARGATE FL 33063

Missile Stamp Club
P.O. BOX 362321 MELBOURNE FL 32936-2321

New Port Richey Area Stamp Club, Inc.
P.O. BOX 684 NEW PORT RICHEY FL 34656-0684

Osceola Stamp Club 34747
4425 PLEASANT HILL RD (LOT 313) KISSIMMEE FL

Port Charlotte Stamp Club
P.O. BOX 3465 PORT CHARLOTTE FL 33949-3645

Port St. Lucie Stamp Club
6009 LANTANA DR FORT PIERCE FL 34951

Ridge Stamp Club of Lakeland, Inc.
3160 TANAGER E MULBERRY FL 33860

St. Augustine Stamp Club
24 D'ALLYON AVE ST AUGUSTINE FL 32084

St. Petersburg Stamp Club
P.O. BOX 546 ST PETERSBURG FL 33731-0546

Sarasota Philatelic Club, Inc.
P.O. BOX 3553 SARASOTA FL 34230-3553

Scandinavian Collectors Club, #23
20000 US 19 N (LOT 816) CLEARWATER FL 34624

Silver Springs Shores Stamp Club
12 SILVER WAY OCALA FL 34472-2307

South Miami Stamp Club
9025 SUNSET DR MIAMI FL 33173

Sun Coast Philatelic Society
1001 STARKEY RD (UNIT 348) LARGO FL 34641

Tallahassee Stamp and Cover Club
P.O. BOX 653 TALLAHASSEE FL 32302-0653

Tampa Collectors Club
P.O. BOX 24831 TAMPA FL 33623-4831

Titusville-Moonport Stamp Club
P.O. 6071 TITUSVILLE FL 32782-6071

Venice Stamp Club
P.O. BOX 1501 VENICE FL 34285-1501

West Volusia Stamp Club
509 E PENNSYLVANIA AVE DELAND FL 32724

Winter Haven Stamp Club
1435 DREXEL AVE NE WINTER HAVEN FL 33881

**PLAN NOW
TO VISIT**

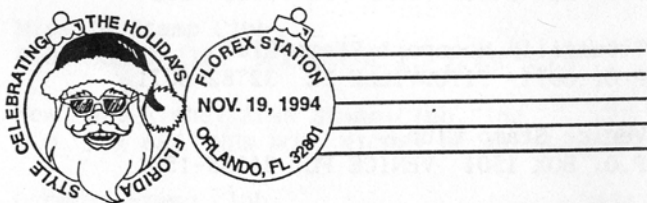


FLOREX 94 SOUVENIRS

BE SURE TO STOP BY THE REGISTRATION TABLE
FOR YOUR SHOW COVERS AND SOUVENIR CARDS

Show cachet with 1 Christmas Stamp	\$1.25
with 2 Christmas Stamps	\$1.75
with all 3 Christmas Stamps	\$2.25

Souvenir Card	\$2.50
cancelled	\$3.00



1995 Sarasota National Stamp Exhibition

February 3rd, 4th, & 5th
Sarasota Exhibition Hall
801 N. Tamiami Trail (US 41)

Saluting Latin American Philately

- | | |
|---|--------------------------------------|
| ☆ Free Admission & Parking | ☆ Special Youth Area |
| ☆ 28 Dealers | ☆ 3000 Pages of Exhibits |
| ☆ U.S. Post Office | ☆ U.N. Post Office |
| ☆ Special Show Cachet
and Cancel | ☆ APS Champion of
Champions Show |
| ☆ Open Friday & Saturday
10 am to 6 pm
Sunday 11 am to 4 pm | ☆ Awards Banquet
Saturday Evening |

Annual Conventions and Regional Meetings

American First Day Cover Society Florida Chapter
Associated Collectors of El Salvador
Florida Federation of Stamp Clubs
International Society of Guatemala Collectors
Mexico Elmhurst Philatelic Society International (MEPSI)
Nicaragua Study Group
Spanish Philatelic Society

for a prospectus or additional information write

SARASOTA PHILATELIC CLUB

Post Office Box 3553
Sarasota, FL 34230

FLORIDA STAMP DEALERS ASSOCIATION, INC.



First in

Service

Dependable

Always

For information on one of the nation's most
active stamp dealers associations.

CONTACT

Randy Savedow
Membership Chairman
P.O. Box 421
Holly Hill, FL 32017