

FLOREX 96

&

Florida Federation of Stamp Clubs

Salute Florida Wildlife

FLOREX STATION
NOV 15, 1996
ORLANDO, FL 32801

SAVE THE
FLORIDA
MANATEE



FLOREX STATION
NOV 16, 1996
ORLANDO, FL 32801



SAVE THE
FLORIDA
PANTHER



November 15, 16, 17 1996
Orlando, Florida

Stamporee Stamp Expo '97

Friday-Saturday-Sunday
April 4-6, 1997

Holiday Inn Palm Beach Airport
1301 Belvedere Road
West Palm Beach, Florida 33405

Show Hours

Friday & Saturday 10:00 AM - 6: PM
Sunday 10:00 AM - 4:00 PM

Admission & Parking **"FREE"**

For more information contact:
Harry R. Johnson, Sr. at (561) 478-0514
Beeper (407) 854-4047
P. O. Box 16843
West Palm Beach, FL 33416-6843



*Florida Federation of
Stamp Clubs, Inc.*

FLOREX '96

TABLE OF CONTENTS

	PAGE
FFSC President's Message	2
FLOREX Chairman's Welcome	3
Schedule of Events	4, 5
Exhibit Judges	7
Exhibit Awards	8, 9
List of Exhibits	11, 13, 15, 17, 19
Floor Plan	20, 21
United Postal Stationery Society	23
Why Collect Postal Stationery?	25
Space Topics Study Group	27
British North America Philatelic Society	29
Florida Postal History Society	31
Show Dealer Listing	33, 35, 37
Member Clubs of the FFSC	38, 40

Welcome to FLOREX 96 !

As President of your Florida Federation of Stamp Clubs, I extend a hearty welcome to your show, FLOREX 96. I would like to extend a hearty and warm Florida welcome to members of visiting societies, United Postal Stationery Society, British North American Philatelic Society, and the Space Topics Study Group.

I hope you will get a pleasant start on the Holidays Florida style.

Sincerely,



E.W. Parker, President
Florida Federation of Stamp Clubs

Wayne Carter	Ed Lyons	John Shirley
Vice President	Secretary	Treasurer

Regional Directors

Phillip D. Beal	Northeast
Frederick C. Dietz	Northwest
Niles Schuh	Central
Paul S. Hoffman	S. Central
Gilbert Lopes	West Coast
George Athens	Southwest
Harry R. Johnson, Sr	Southeast
Carlos San Martin	Southern

Jack Harwood	Mrs. Mickey Gerhardt
Immediate Past President	Federation Historian

Walt Parker, Editor, THE FLORIDA PHILATELIST

WELCOME TO FLOREX '96

Welcome to FLOREX '96 and the Sunshine State!

FLOREX is fortunate in having several guest societies, both national and local, meet with us this year. We are fortunate to have the North America Youth Stamp Exhibiting Championship return to FLOREX.

I hope you will visit the Save the Manatee Club's table and see the big cats from Predators Plus, Inc. on Saturday.

Our thanks to the Florida Stamp Dealers Association for donating the Grand Award - A one ounce U.S. Eagle gold bullion coin.

I would like to add my personal thank you to the committee chairmen listed below. Direct your complaints to me and your complements to them. To all members of the Florida Federation of Stamp Clubs and our guests, let's enjoy the show!



PHIL STAGER
General Chairman, FLOREX '96

Assistant Chairman	Phil Fetting
Exhibits & Awards	Ed Evan
Bourse	Barry Savedow
Finance	John Shirley
Judges	Clyde Jennings
Cachet & Souvenir Card	Stephen Patrick
Youth	Miriam Burtsche
Publicity	Paul Percha

SCHEDULE OF EVENTS

THURSDAY, NOVEMBER 14

8:00 pm UPSS Board Meeting Hospitality Suite

FRIDAY, NOVEMBER 15

8:00 am Judges Breakfast Livingston St. Cafe

10:00 am Auction Lot Viewing..... Lake Dot Room

10:00 am **SHOW OPENS** Hall 600 & 700

11:00 am Space Topics Study Group Meeting
..... Garland Room

2:00 pm American Airmail Society - Members Auction
..... Garland Room

6:00 pm **SHOW CLOSES**

6:30 pm Hospitality Room Open

7:00 pm David G. Phillips Auction .. Lake Dot Room

SATURDAY, NOVEMBER 16

9:00 am FFSC Board Meeting Hospitality Room

10:00 am **SHOW OPENS** Hall 600 & 700
The BIG cats arrive Hall 600

10:30 am UPSS General Meeting Magnolia A Room

11:30 am FFSC General Meeting Magnolia A Room

12:00 am FL Postal History Society ... Garland Room

1:30 pm FL Chapter AFDCS Meeting Garland Room
Ed Lyon Guest Speaker

2:00 pm AAPE Seminar Magnolia A Room

3:00 pm Judging Critique Magnolia A Room

6:00 pm **SHOW CLOSES**

6:30 pm Cash Bar Opens Magnolia Room

7:00 pm Awards Banquet Magnolia Room

9:00 pm Hospitality Room Open

SCHEDULE OF EVENTS (contd)

SUNDAY, 17 NOVEMBER

8:00 am FSDA Breakfast Ballroom A

10:00 am **SHOW OPENS** Hall 600 & 700

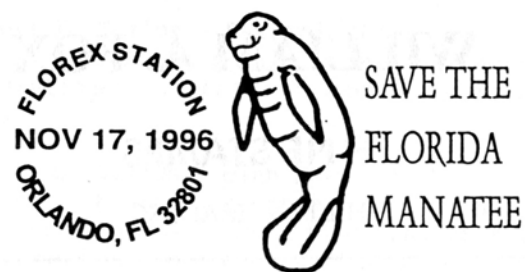
11:00 am British North America Philatelic Society
Meeting Garland Room

3:00 pm **SHOW CLOSES** * SEE YOU NEXT YEAR!

SHOW SOUVENIRS

Cacheted and Cancelled Covers: each \$1.50
3 for \$4.00

Souvenir Cards: \$2.00 each
\$2.50 with special cancel



RARE STAMPS AND COVERS

Box 1117
Osprey, Florida 34229
Phone (813) 966-5563
(800) 458-8956
Fax (813) 966-4568



**Gordon
McHenry, Inc.**

Service, Courtesy, Confidence



LONDON



NEW YORK

P. O. Box 960 SOUTHAMPTON, N.Y. 11969 (516) 283-6821

JOSEPH E. KROIS JR.

philatelic consultant

P. O. BOX 2482 PALM BEACH, FL 33480 (407) 585-9594

Table #3

WILLIAM A. FOX

FINE STAMPS

HILTON HEAD, SC

CLASSIC STAMP & COVER CO.



APS, GPS

Philatelic Sales

- STAMPS AND COVERS
- POSTAL HISTORY
- LOTS
- APPRAISAL-PURCHASE
- CONSULTATION
- SPECIALIZED AREAS

P. O. BOX 330635
ATLANTIC BEACH, FL 32233
TEL. (904) 249-1871

THE JURY

Chuck LaBlonde - Chelmsford, Mass.

Our chief judge is a retired USAF colonel and is a noted author, gold medal winner, and specialist in Switzerland, WWII censored mail and other areas of philately.

Wayne Menuz - San Jose, Calif.

A postal stationery specialist with an extensive knowledge of Italy and Great Britain and their respective colonies.

Dr. Louis 'Lou' Call - Little Falls, N.Y.

A retired teaching doctor with an extensive knowledge of postal stationery, TPO markings, the Far East, and the countries of South and Central America.

Dr. Robert F. Taylor - Sanford, N.C.

A retired practicing physician with expertise in postal stationery, postal history, and France and colonies.

Dr. Harvey G. Tilles - High Point, N.C.

A podiatrist in active practice, he exhibits at the Grand level nationally and has extensive expertise in U.S., perfins, precancels, booklets, and stamp production methods.

Alfred F. Kugel - Hinsdale, Ill.

Our apprentice! Expertise in postal history, especially 19th and 20th century military mail, and a frequent Grand Award winner at the national level.

EXHIBIT AWARDS

GRAND Award - One Ounce U.S. Gold Eagle donated by the Florida Stamp Dealers Association - awarded to the Best in Show

Reserve Grand - U.S. Gold Half Eagle - awarded to the second best in the show.

Gold, Vermeil, Silver, Sil/Bronze, & Bronze Medals

Puerto Rico Philatelic Society

Raul Gandara Award for Excellence in Philately
(Presented by Raul Gandara, Jr.)

American Philatelic Society

Pre-1900, 1900-1940, Post 1940 & Research Medals

American Topical Association

First, Second, and Third Place Medals

American Association of Philatelic Exhibitors

Excellence of Presentation Awards
Creativity Award

Maurice Apflebaum Award

Best Exhibit by a First Time Exhibitor

Florida Stamp Dealers Association Award

Best Exhibit by Member of FL Feder. of Stamp Clubs

Ingeborg Herst Award

Difficulty of Acquisition

Postal History Society Award

Best Exhibit of Postal History

Space Unit Awards

Gold, Silver, and Bronze Medals

Orlando Postmaster's Award

Best Exhibit of U.S. Stamps

AWARDS (contd)

United Postal Stationery Society Awards

Marcus White Showcase Grand & Reserve Grand Awards

Marcus White Award

Blue and Red Certificates

American Airmail Society

Best Aerophilatelic Exhibit

Michael Rogers Award

Best Asian Exhibit

Bureau Issues Association

Statue of Freedom Medal

U.S. Philatelic Classics Society Award

Best exhibit of material from the Classic Period

Jeanne and Stan Jersey Award

Best Exhibit of Military Mail

Hollywood Stamp Club Award

Best Exhibit of Postal History

U.S. Cancellation Club

Charles D. Root Memorial Award

DISPLAY CLASS AWARDS

First, Second, & Third Place Ribbons

FLOREX YOUTH AWARDS

Grand Award to best youth exhibit

Gold, Silver, & Bronze Medals

ATA Youth Award

NORTH AMERICAN YOUTH STAMP EXHIBITING CHAMPIONSHIP

Grand Champion

FLOREX Award for Excellence in Philately



Coughlin's



P O BOX 762 WASHOUGAL, WA 98671-0762

Ray L. & Cora C. Coughlin, Prop.'s

Specializing in US Possessions and US Postal History since 1970. We stock Cuba, Puerto Rico, Philippines & Hawaii all era's as well as Canal Zone and Ryukyus. Stamps, stationery, and postal history. We have a modest stock of topical and world wide stamps. Want lists in our specialties solicited.

We **BUY** - Selling by Private Treaty Sales, Shows, Want lists.

Phone & Fax: 360-835-7990 email: coughlin@teleport.com



Sunbelt Covers & Stamps

HAROLD T. BABB
803-252-3515

P. O. Box 2211
Columbia, SC 29202

Located at: 1445A Shop Road

Table #7

WILLIAM E. BARKER

CLEVELAND, OHIO
ON THE SOUTH COAST OF LAKE ERIE

POSTAL HISTORY

WEO STAMPS

248 Utah Avenue
Fort Lauderdale, Florida 33312

WILLIAM E. OGDEN

Member FSDA

P. O. Box 252
New River Station
Ft. Lauderdale, FL 33302

(954) 583-6071

THE EXHIBITS

1 - 8

Air Poland

Casey R. Sadowski North Ft. Myers, FL
Early Polish mail flights by airplane, glider & rockets.

9 - 16

Development of United States Lunar Exploration

Dr. Reuben A. Ramkisson Oak Brook, IL
Astrophilatelic presentation of U.S. lunar exploration by unmanned probes, animal and manned missions, particularly Mercury, Gemini, and Apollo.

17 - 24

Washington-Franklin Postal History

Paul D. Bourke Ashland, MA
Contemporary usages of the Washington-Franklin regular issue of 1908-1922.

25 - 32

Florida Machine Cancels the Classic Period 1897-1936

Stan Jameson St. Petersburg, FL
Study of machines and machine cancels used in the state of Florida during 1897-1936.

33 - 39

Precancels of the United States, 1844-1996

Arnold H. Selengut Temple Terrace, FL
A survey of U.S. local and Bureau precancels from the pioneer through the present, with emphasis on unusual usages & postal history.

40 - 46

Canada - The Small Queens, 1870-1897

John T. Burnett Sidney, OH
Small Queens period 1870-1897.

47 - 53

The Austria Costume Issues 1934 and 1948

Joann Thomas Redlands, CA
Stamps and postal stationery that helped promote nationalism at two times of crisis in Austria.

54 - 60

U.S. Postage Booklet Panes-The First 85 Years

H.A. Roark Narragansett, RI
First 85 years of U.S. postage booklet pane production, including air mail and possessions.

Robert L. Welky

Professional Philatelist

Ft. Lauderdale, FL 33307

F.S.D.A.

APS

Box 244474

954-564-2587

N.S.D.A.

RKA

cachets

First Day Covers

Postal History

Ralph K. Achgill

P. O. Box 6508

Lafayette, IN 47903-6508

Phone: 317-296-2502

Fax: 317-296-4502

Member: A.P.S., A.F.D.C.S., A.S.D.A.

CARL E. LIPTON, ATTORNEY

Dealer in Postage Stamps, & Covers

19821 N.E. 21st Court

North Miami, Beach, Florida 33179

(305) 932-8597

Member: APS, ASDA

FSDA • APS



H & S ROGG

P. O. Box 1076

PORT RICHEY, FL 34673-1076

STAMPS

BASEBALL CARDS

COINS

SUPPLIES

61 - 66 **Postal History - Van Diemen's Land; Markings, Rates and Routes 1824 - 1870**

John F. Cress

Asheville, NC

Development of colony's postal system displaying marks, rates and routes used through the entire Van Diemen's Land era of Tasmania.

67 - 76 **Cancellations on the U.S. Two Cent Vermilion Banknote**

Matthew W. Kewriga

Holliston, MA

Survey of cancellations used on the two cent vermilion Banknote.

77 - 82 **Pakistan Postal Stationery**

Kenneth S. Baird

Nantucket, MA

Focus is on pre-independence postal markings, Pakistan overprints on India stationery, and post-independence usage, rates and printing varieties.

83 - 90 **Booklet Panes**

John D. Shirley

Altamonte Springs, FL

An exhibit of each pane issued from 1900 through 1962.

91 **Stars In Your Eyes**

Brent P. Abbatantuono

Winter Park, FL

Follows the evolution of Planetaria.

92 **Postmarks from the Last Weeks of the 52 Post Offices of Karalia (1944)**

LeRoy W. Ferber

West Berlin, NJ

All of the 52 post office cancels.

93 - 98 **U.S. Postal Cards: Foreign Usage Until WWI**

Alexander Gundel

Germany

Postage rates, U.S. exchange office markings, international mail routes, and usage during international conflicts.

99 - 100 **Russia in Space**

Gerhardt "Bill" Kaufmann

Bergenfield, NJ

Covers commemorating and flown to and from Russian space stations.

101 - 108 **Usage of the Jefferson Card of 1914**

Charles W. Thrower

Allentown, PA

Interesting usages from 1914 to 1951.

arlington stamp and coin company

1350 University Blvd. N. Jacksonville, Florida
(904) 743-1776

UNITED STATES

British Commonwealth

Ship Covers

Air Covers



Pat Campbell
APS Member Since 1970

THE STAMP EXPLORER

"Always Searching For Philatelic Treasures Large & Small"

1232 Nicholson Rd.
Jacksonville, Florida 32207
(904) 396-9812



PHILATELIC CONSULTANTS

Specializing in Asian and Worldwide Philately
1776 Peachtree St. NW #220 South
Atlanta, GA 30309

Appointments Only
Office: (404) 892-0054
FAX: (404) 892-5752

PHILIP G. HODGES, PRESIDENT
ASDA, APS, FSDA, SDAG

- 109 - 111 Confederate States Fakes and Counterfeits**
Charles F. Hanselmann Blythewood, SC
Examples of fakes and counterfeits of stamps of the confederacy to include provisional issues.
- 112 - 120 The Peoples Republic of China - Its Formative Years as Told by its Covers**
Philip Angel Clearwater, FL
Covers from 1959 - 1979 telling the history of the period.
- 121 - 124 China in Space**
B.A. Beimers The Netherlands
The development of China's space technology.
- 125 - 131 The Official Commemorative Cards of Japan 1902-1929**
Leroy P. Collins, III Norfolk, VA
Issues of the Department of Communications for Japan proper, including major printing varieties, military post imprints and postal usages.
- 132 - 138 Postal Stationery of Denmark, 1865 - 1900**
Marvin D. Hunewell St. Louis, MO
The evolution of Denmark's postal stationery during the 19th century in terms of designs, types and rates.
- 139 - 141 The Beginnings of Swiss Military Aviation 1913 - 1918**
George Struble Salem, OR
The 1913 air pioneer stamps and flights of the Flugspende; 1913 Zurich vignettes; the Flieger-Abteilung stamps of 1914 - 1918.
- 142 - 144 February 23, 1980 - 75th Anniversary of Rotary International**
Clayton P. Bishop, Jr. Eustis, FL
The 43 stamps issued by 13 countries on February 23, 1980 - 75th anniversary of Rotary International.
- 145 - 147 19th Century Argentina Revenue Document Stamps**
LeRoy W. Ferber West Berlin, NJ
Adhesives for the first 21 years of their 100 years of use.
- 148 - 152 Man Beneath the Sea**
Roland Essig West Bend, WI
Man's underwater adventure from Alexander the Great to the present.



WORLDWIDE & U.S.
CLASSICS • BACK-OF-BOOK • DUCKS
INVERTS • SOUVENIR • PRECANCELS
 with an especially deep stock of
 British Europe and Africa and Japan

Arnold H.
 Selengut

BEJJCO, INC.

P. O. Box 16681, Temple Terrace, FL 33687 813-980-0734

Appraisals

Anything Philatelic

THE STAMP PROFESSOR

United States and Foreign
 Collections & Accumulations
 Plate Blocks & Singles
 Bought & Sold

John A. Hunter
 36 Sevilla St.
 St. Augustine, FL 32084

Day 829-6451
 Eve. 471-1549
 By Appointment Only

John H. Smith
 Buying and Selling

**AMERICAN
 STAMP
 AND
 COIN**



P. O. Box 10610
 St. Petersburg, Florida 33733
 (813) 327-9745

6610A 4th Street N.
 St. Petersburg, Florida 33702
 (813) 522-9745

BRITISH COMMONWEALTH
 ASIA - U.S.



*Court Street
 Stamp and Coin Shop*

F.S.D.A. - F.U.N. - A.P.S.



1250 COURT STREET • CLEARWATER, FLA 34616
 PHONE 813 / 442-5784

CARL KISH
 OWNER

GEORGE WESTERN
 MANAGER

- 153 - 155 **The Flight of STS-1**
 Pedro D. Sarmiento Fort Washington, MD
 Brief history of the first orbital flight of the Shuttle
Columbia from launch to landing.
- 156 - 163 **Bulgaria - 19th Century Postal Stationery**
 Earl H. Galitz Miami, FL
 The early postal stationery issues.
- 164 - 166 **"Gittin' Thar" Rebelese for "Getting There"**
 Clyde Jennings Jacksonville, FL
 Some of the ways and means of moving a human body
 from point "A" to point "B".
- 167 - 176 **Postal Cards of Peru 1883 - 1914**
 Robert C. Magnesen Elmhurst, IL
 Postal cards including varieties and usages from a postal
 stationery collection of Peru.
- 177 - 180 **A B-I-I-I-I-G Belly Ache**
 C. Jennings & F. Dixon Jacksonville, FL
 A showing of edibles.
- 181 - 186 **Postal Cards of Finland 1871 - 1900**
 Kauko Aro Belleville, NJ
 The evolution of Finnish postal cards through different
 types and varieties and their usage.
- 187 - 196 **19th Century Penalty Mail**
 Lester C. Lanphear, III San Diego, CA
 An in depth study of U.S. penalty mail.
- 197 - 205 **United States Postal Cards Used Internationally**
 William J. Hart Shrub Oak, NY
 International use of U.S. postal cards covering a period of
 one hundred years.
- 206 - 208 **Franklin Two Cent Postal Card of 1951**
 Lewis E. Bussey Denver, CO
 Productivity, postal rates and usage.
- 209 **The Exporta Definitive Issue of Mexico**
 Philip Angel Clearwater, FL
 A study of the Exporta series, 1975-1993.

STARNES STAMPS

MAC STARNES
606-744-9083

602 S. Maple
Winchester, KY 40391



THE CLASSIC COLLECTOR

P. O. Box 6277, Station "J", Ottawa, Canada K2A 1T4

Telephone: (613) 722-1621

Table #22

VENTURA GALLERIES

STAMPS FOR COLLECTORS

. STAMFORD, CONNECTICUT

S. GEORGE TRAGER

STAMPS & COINS FOR COLLECTORS

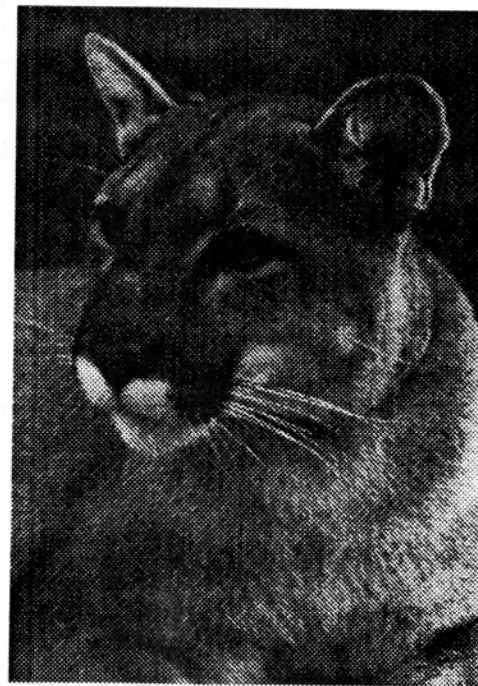


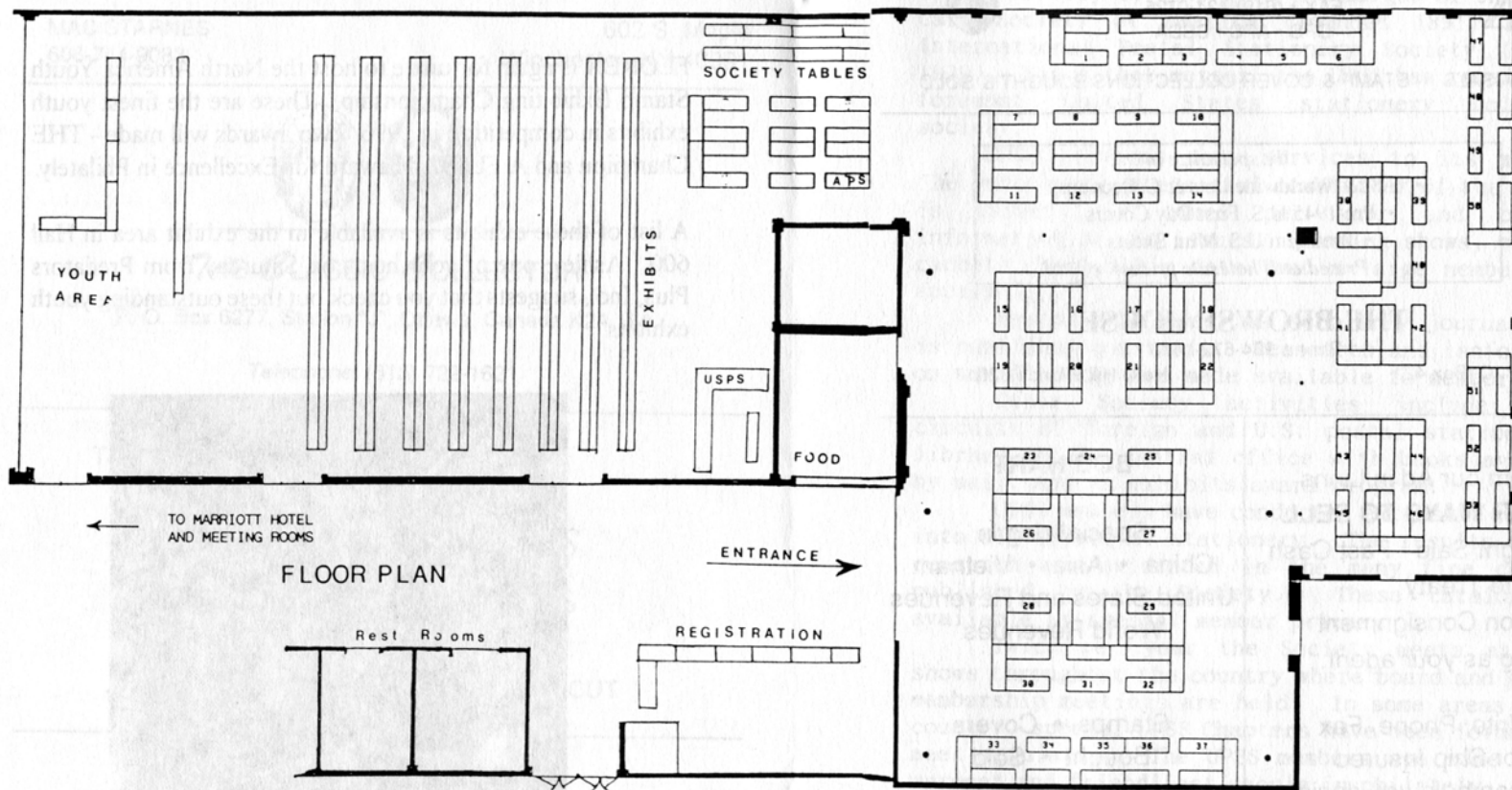
301 41ST STREET
MIAMI BEACH, FLORIDA 33140
(305) 531-6727

NORTH AMERICA YOUTH STAMP EXHIBITING CHAMPIONSHIP

FLOREX is again fortunate to host the North America Youth Stamp Exhibiting Championship. These are the finest youth exhibits in competition in 1996. Two awards will be made - THE Champion and A FLOREX award for Excellence in Philately.

A list of these exhibits is available in the exhibit area in Hall 600. Ashley, one of your hosts on Saturday from Predators Plus, Inc., suggests that you check out these outstanding youth exhibits.





FLOOR PLAN

**BILL BAEHR
CELINE L. BAEHR**

**CALL FOR
APPOINTMENT**

B. & C. STAMP CO.
PROFESSIONAL PHILATELISTS
1207 CARLSBAD VILLAGE DRIVE, "K"
CARLSBAD, CALIF 92008
(619) 434-0700 • (619) 434-0882
FAX • (619) 434-0725
GPS • APS • CSDA



APPRAISALS • STAMP & COVER COLLECTIONS BOUGHT & SOLD

We specialize in . . .

- U.S. & Worldwide Lots & Collections
- Pre-1945 U.S. First Day Covers
- Premium U.S. Mint Sheets

Priced at Wholesale prices!

THE BROWSE HOUSE

Phone 904-672-1673

P. O. Box 421

Holly Hill, Florida 32017

From our Ad in Linns FOUR WAYS TO SELL

- 1) Outright Sale - Fast Cash
- 2) Private Treaty
- 3) Auction Consignment
- 4) Acting as your agent.

Write, Phone, Fax
or Ship Insured
We can help you decide
which way is best for you

Jerry Siegel
1920 E Hallandale Beach Blvd.
Suite 507
Hallandale, FL 33009
954-457-0422

BOB HART

Specializing in
China • Asia • Vietnam
United States and Revenues
World Revenues

Stamps • Covers
Bought • Sold

Member APS • ARA • ASDA
FSDA • SDAG • SICP • STP

P. O. Box 11746
Jacksonville, FL 32239
(904) 642-1439

THE UNITED POSTAL STATIONERY SOCIETY

The United Postal Stationery Society (UPSS) was formed on July 1, 1945 with the merger of the Postal Card Society of America (founded 1891) and the International Postal Stationery Society (founded 1939). Since that merger, the UPSS has remained the foremost United States stationery collecting society.

UPSS provides many services to its members. *The Pantograph*, the social newsletter of the society is issued six times per year and contains information of new issues, upcoming shows, special cachets, membership data, and a large members-only auction.

Postal Stationery is scholarly journal which is published quarterly. Research and information on new findings are made available to members.

Other Society activities include: Sales circuits of foreign and U.S. postal stationery, a library in the central office with books available by mail, and an exhibits award program.

UPSS members have conducted extensive research into all aspect of stationery. The results of this research are evidenced in the many fine catalogs published by the Society. These catalogs are available at special member prices.

Twice per year the Society meets at major shows throughout the country where board and general membership meetings are held. In some areas of the country, special UPSS Chapters have been formed that meet regularly. The UPSS members are some of the warmest and friendliest people in philately. Please come and meet some of us at the Society's table and wherever you see us throughout the FLOREX show.



Earl T. Reeder

Ann Fettig

A & R STAMP & COIN, INC.

Stamps • Coins & Currency • Jewelry
Supplies & Literature
We Buy, Sell & Appraise



American Plaza
1516 W. Vine Street (US 192)
Kissimmee, FL 34741



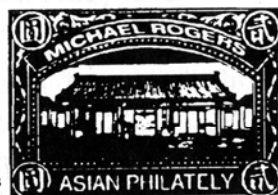
P. O. Box 420730
Kissimmee, FL 34742-0730
(407) 933-2225

☆☆ WE BUY CHINA ☆☆

MICHAEL ROGERS, INC.

199 E. Welbourne Avenue Suite 3
Winter Park, FL 32789-4324
Office (407) 644-2290

Toll Free 1-800-843-3751 Fax (407) 645-4434
Member of over thirty Philatelic Societies & Organizations
Including ASDA, PTS, SCC, AAMS, APS



VISA, MASTERCARD, AMERICAN EXPRESS

Harry & Rita Graetz

DEALERS IN STAMPS
MEMBER APS • FSDA

2231 CONDOLEA TERR.
LEAWOOD, KS 66209

(913) 491-0398

APS

USPCS

ASDA

MICHAEL A. BANAS JR.

QUALITY PRE-1940
U.S. POSTAGE STAMPS

P. O. BOX 770561
CORAL SPRINGS, FL 33077
PH: 954-977-7852

BUY

SELL

WHY COLLECT POSTAL STATIONERY?

Those who enjoy exploring new paths, who are interested in postal history, or who enjoy the challenge of something different find postal stationery a fascinating field. Ample varieties of stationery exist to satisfy any collecting interest.

For those who wish to extend their philatelic and historical knowledge, postal stationery offers an excellent opportunity. The collector can learn about different postal systems and services and can expand his knowledge of the types and manufacture of stationery as well as paper, printing methods, and design.

Postal stationery is an important addition to a collection of adhesive stamps. A country collection without its stationery is incomplete. A thematic collector who neglects postal stationery pertaining to the chosen theme will be missing a major philatelic element.

The messages on the backs of postal cards and on letter sheets are important historical documents. Through them one can trace the changing customs of peoples and countries.

Postal stationery, due to the sturdier nature of the items, is generally less prone to careless damage than stamps - no missing or bent perforations to worry about.

Postal stationery should be collected for the enjoyment and learning. Any increase in value is just a bonus. ...and the biggest bonus is the philatelic friends one can acquire in your collecting pursuits. The United Postal Stationery Society, the foremost postal stationery group in the U.S., invites you to join us. For more information, contact the UPSS Central Office, PO Box 48, Redlands, CA or visit our society table at the show.



Table #32

ARMSTRONG PHILATELICS

CHATSWORTH, CALIFORNIA

STAMPS FOR COLLECTORS

*We are active buyers of quality collections
contact for a cash offer*



ALBANY STAMP CO.



P. O. BOX 30398
CHARLESTON, S.C. 29417-0398
CONTACT STEVE RADIN AT: 803-766-6396



: MICHAEL :



P. O. BOX 6130A TITUSVILLE, FL 32782 • 407-269-3377

NEW LOCATION
THIS YEAR

SEE ME
AT
TABLE #34

SEE ME FOR:
U.S. POSTAL CARDS
U.S. POSTAL STATIONERY
U.S. MINT AND USED REVENUES
SPACE COVERS
POSTAL HISTORY (ESP. FLORIDA)
Serving the Collector for 23 Years

PETER L. DEARING

JACKSONVILLE
STAMP AND COIN

P. O. BOX 1866
GREEN COVE SPRINGS, FL 32043
PH: (904) 269-6338

THE SPACE UNIT

The Space Unit, an affiliate of the APS and ATA, was formed 2 years after the launch of Sputnik 1. Its 650 members are located aacross the U.S. and throughout the world. It is the largest space or astrophilatelic group in the world.

The Unit holds its annual meeting in conjunction with a major philatelic exhibition in the U.S.A. Regional meetings are held in cities with a concentration of members.

A major benefit of membership is the bi-monthly publication, the *Astrophile*, which was started in 1957. The publication includes regualr auctions, space news from correspondents around the world and tips on how to get covers and autographs from astronauts, cosmonauts, space station managers, and other space personalities.

The Unit offers protection for heirs with a service to help dispose of material at fair market value. Publications also provide information to help with your collecting and exhibiting, recognition of fakes and forgeries, and how to acquire space stamps and covers.

WHAT IS ASTROPHILATELY?

Astrophilately is based on a *chronological* philatelic study of the historical, technical, and scientific aspects related to space research, programs, and their development. While the theme is always space related, astrophilately is not a thematic but a chronological study. The emphases are on those of appropriate, time, date, and place of the postal chronology as shown by official government cachets and regualr and commemorative postmarks. Of primary concern is that the cover utilize the correct time, date, and location in direct relevance to the chronology and historicity of the events being developed.

8849 LONG POINT, SUITE #5
HOUSTON, TEXAS 77055

(713) 468-0644
(713) 465-1581



Ameen Stamps

WORLDWIDE STAMPS FOR COLLECTIONS

RAY C. AMEEN, M.D.

ASDA, APS, TSDA
MEPSI, RCSDA, GPS

MILLS PHILATELICS

FINE POSTAL HISTORY

See us at Table # 37

Table #38

LIMOGES' STAMPS

P. O. BOX 38
BOALSBURG, PA 16827

THE *British North America*
Philatelic Society LTD.



Founded in the early 1940's, The British North America Philatelic Society (BNAPS) is an international organization devoted to the collector and philatelic researcher of Canada and its pre-confederation colonies.

The membership consists of general BNA collectors, developed specialists, philatelic authors, and respected dealers. Any person of good character may become a member and share in the fellowship and benefits that the society offers. If you have an interest in BNA philately, you will find a warm welcome to this friendly society.

Some of the member benefits are:

BNA TOPICS, the society's official journal published quarterly and averaging more than 50 pages per issue. BNA TOPICS is dedicated to philatelic papers and information discovered by study groups. The other quarterly publication is BNAPortraits which is dedicated to the business of the society.

The 21 different Study Groups which include everything from the Small Queens to the Elizabethan Era. These groups often publish papers, monograms, and books. Study group membership is encouraged.

The Sales Circuits which enable members to dispose of unwanted material.

The Annual Convention held in the fall. Imagine going to a show dedicated to your specialty with dealers that have the material that you collect!

The Regional Groups which consist of members who meet for fun and stamping on a regional basis. We are meeting here in Orlando to see if enough interest exists in the SouthEast U.S. Please joins us!

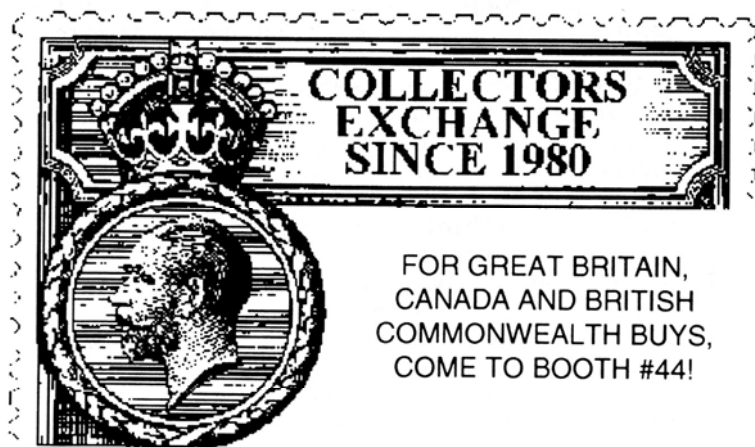
GILCRAFT COVERS

Sturgill Gillis
P. O. Box 232
Zellwood, FL 32798

ED LYONS
Ph (813) 968-3493

EDKEN
First Day Covers

THE PERF GUAGE
P. O. BOX 2648
INVERNESS, FL 34451-2648
(800) 842-5305 USA (800) 437-8036 CANADA



FOR GREAT BRITAIN,
CANADA AND BRITISH
COMMONWEALTH BUYS,
COME TO BOOTH #44!

Member APS; RPSC; FSDA
All Major Credit Cards,
Cdn., U.S., & G. G. funds accepted

P. O. Box 160716
Altamonte Springs, FL 32701

FLORIDA POSTAL HISTORY SOCIETY

The Florida Postal History Society was established on November 5, 1992 by a group of philatelists interested in the postal history of Florida. Our group now numbers over 50 members and publishes the *Florida Postal History Journal* semi-annually. The annual meeting is held in conjunction with FLOREX and is open to all interested philatelists. Meetings are also held at STAMPOREE and the Sarasota National Philatelic Exhibition.

An ongoing project of the Society is an update of the *Handbook on Florida Stampless Postal History*. Anyone interested in contributing to this project is welcome.

Membership applications can be obtained from Deane R. Briggs, M.D., 160 East Lake Howard Drive, Winter Haven, FL 33881. Dues are \$10.00 annually and include all publications of the Society.

Please join us at our Saturday meeting.

SAVE THE MANATEE CLUB

JOIN PEOPLE FIGHTING TO SAVE THE MANATEES

Save the Manatee Club was established in 1981 by former Governor Bob Graham and singer/songwriter Jimmy Buffett to promote public awareness and education about the endangered manatee. Your support will help to inform people about the manatee's plight and what they can do to insure its survival in the wild.

Please stop by our table for more information

Collection & Accumulation Specialists
WE BUY STAMP COLLECTIONS & RELATED MATERIAL

PARK BLVD. STAMPS

K. V. Jensen

10 - 5:30 or
By Appointment
(813) 544-3533

4922 73rd Ave. N.
Pinellas Park, FL 33565

Table #45

EDWARD F. PALMER

P. O. Box 23308
Ft. Lauderdale, FL 33307

The Revenuer

Classic U.S.
BoB • Revenues • Ducks
Cinderella • Tax Pairs

RK

Collectibles
P. O. Box 424
Greenwood, IN 46142

RICK WILDEY
(317) 889-7904

CORBIN'S

Stamp & Coin

Buy • Sell • Estimates • Appraisals



Del Corbin
115-A E. Brandon Blvd.
Brandon, FL 33511
813-651-3266

SHOW DEALER LISTING

TABLE	DEALER
1	GORDON McHENRY, INC. Osprey, FL
2	JOSEPH E. KROIS, JR. Palm Beach, FL
3	WILLIAM A. FOX Hilton Head, SC
4	CLASSIC STAMPS & COVERS Atlantic Bch, FL
5	COUGHLIN'S Washougal, WA
6	SUNBELT COVERS & STAMPS Columbia, SC
7	WILLIAM BARKER Cleveland, OH
8	W.E.O. STAMPS Ft. Lauderdale, FL
9	WELKY'S WORLD OF STAMPS Ft. Lauderdale, FL
10	RKA's CACHETS Lafayette, IN
11	CARL E. LIPTON N. Miami Beach, FL
12	ARLINGTON STAMP & COIN Jacksonville, FL
13	H & S ROGG Port Richey, FL
14	THE STAMP EXPLORER Jacksonville, FL
15	PHILATELIC CONSULTANTS Atlanta, GA
16	BEJJCO, INC. Temple Terrace, FL
17	THE STAMP PROFESSOR St. Augustine, FL
18	AMERICAN STAMP & COIN St. Petersburg, FL
19	COURT ST. STAMP & COIN SHOP Clearwater, FL
20	STARNES STAMPS Winchester, KY

CANADA/BRITISH NORTH AMERICA

Canada's Leading Retailer of Superb Quality Classics



Canada SG R8 — Superb, OG
unmounted with certificate

- ◆ We feature the "Gems of BNA" from 1851-1945. Monthly Black & White lists free on request.
- ◆ Colour reference copies: 6 issues \$25; 12 issues \$40 postpaid. A must for the BNA specialist's library.
- ◆ Enlarged photos of every stamp above our descriptions. 100-200 select items per list. All superb.

Don't need perfection? Ask for our "Value List". Many lovely classics at large discounts.

Tel: 1-800-663-8364

West Island Philatelics (USA) Inc.

Home Savings Tower, Suite #1815
1720 Harrison Street
Hollywood, FL 33020
U.S.A.

SHOW DEALER LISTING

TABLE	DEALER
21	THE CLASSIC COLLECTOR Ottawa, Ont.
22	VENTURA GALLERIES Stamford, CN
23-24	S. GEORGE TRAGER Miami Beach, FL
25	B & C STAMP CO Carlsbad, CA
26	THE BROWSE HOUSE Holly Hill, FL
27	JERRY SIEGEL Plantation, FL
28	A & R STAMP & COIN, INC. Kissimmee, FL
29	WINTER PARK STAMP SHOP Winter Park, FL
30	HARRY E. GRAETZ Leawood, KS
31	MICHAEL A. BANAS, JR. Coral Springs, FL
32	ARMSTRONG PHILATELICS Chatsworth, CA
33	ALBANY STAMP CO. Charleston, SC
34	MICHAEL Titusville, FL
35	AMEEN STAMPS Houston, TX
36	JACKSONVILLE STAMP & COIN Jacksonville, FL
37	MILLS PHILATELICS Thornburg, VA
38	LIMOGES' STAMPS Boalsburg, PA
39-40	GILL CRAFT Zellwood, FL
41	ROBERT HART STAMP CO. Jacksonville, FL
42	EDKEN/PERFGAUGE Tampa, FL



ALWAYS BUYING

Jim McGrath

**U.S. & Foreign
Stamps & Collections**

Post Office Box 8057
Port St. Lucie, FL 34985-8057

(407) 336-7957

See us at
Booth #49-50

Stop by and browse through our large selection of
U.S. & Foreign Stamps, Plate Blocks, Naval &
Worldwide Covers, Lots and Collections.

NEW ENGLAND STAMP

APS

- Established 1983 -

ASDA

4987 Tamiami Trail E.
Village Falls Professional Center
Naples, FL 34113

Phone 941-732-8000
Fax 941-732-7701

Thematics

Postal History

L. D. MAYO, JR. PHILATELIC AUCTIONS

Box 20837
Indianapolis, IN 46220

Tel./Fax (317) 255-5912
E-mail: dannmayo@indy.net

RARE POSTAGE STAMPS

ESTATE APPRAISALS

Richard A. Champagne

BOX 372, NEWTON, MA 02160
617 / 969-5719

MEMBER: ADSA - APS - USPCS - PRA



SHOW DEALER LISTING

TABLE	DEALER
43	PARK BLVD. STAMPS Pinellas Park, FL
44	COLLECTORS EXCHANGE Altamonte Springs, FL
45	EDWARD F. PALMER Ft. Lauderdale, FL
46	THE REVENUER Greenwood, IN
47	CORBIN'S STAMP & COIN Brandon, FL
48	JIM MC GRATH Port St. Lucie, FL
49-50	NEW ENGLAND STAMP Naples, FL
51	WEST ISLAND PHILATELICS Hollywood, FL
52	L.D. MAYO, JR. Indianapolis, IN
53	RICHARD A. CHAMPAGNE, LTD. Newton, MA

SUPPORT YOUR LOCAL STAMP DEALER



MEMBER CLUBS
FLORIDA FEDERATION OF STAMP CLUBS

Bay County Stamp Club
303 ALEXANDER DRIVE LYNN HAVEN FL 32444

"Cap" Townsend Stamp Club
48 DOGWOOD COURT SAFETY HARBOR FL 34695-4639

Cape Coral Stamp Club
3903 E. RIVER DR. FT. MEYERS, FL 33916

Central Florida Stamp Club
P.O. BOX 3781 ORLANDO FL 32802-3781

Century Stamp Club
113 LAKE TERRY DR. W.PALM BCH, FL 33411

Clearwater Stamp Club
P.O. BOX 5442 CLEARWATER FL 34618-5442

Collier County Stamp Club
5029 TAMIAMI TR E NAPLES FL 33960

Cresthaven Stamp Club
3860 HIDDEN CYPRESS WAY LAKE WORTH, FL 33467

Cuban Philatelic Society, Inc.
P.O. BOX 141656 MIAMI FL 33114-1656

Delray Beach Stamp Club
1120 MAHAGONY WAY #102 BOYNTON BEACH FL 33445

Florida Postal History Society
160 E LAKE HOWARD DR WINTER HAVEN FL 33881

Florida Precancel Club
2663 DERBYSHIRE RD MAITLAND, FL 32751-3665

Florida Stamp Dealers Association
P.O. BOX 420730 KISSIMMEE FL 34742-0730

Florida Chapter 60, AFDCS
3295 DATURA BLVD. VENICE, FL 34293

General Francis Marion Stamp Club
8831C SW 94TH LANE OCALA FL 34481

Germany Philatelic Society, #23
P.O. BOX 2346 PORT CHARLOTTE FL 33949

Golden Triangle Stamp Club
P.O. BOX 931 MT DORA FL 32757

Halifax Area Philatelic Society
P.O. BOX 1361 ORMOND BEACH FL 32175-1361

Highlands Stamp Club
99 RALLY RD AVON PARK FL 33825

Hollywood Stamp Club
4801 TAYLOR ST. HOLLYWOOD FL 33028

Jacksonville Stamp Collectors Club
857 S EDGEWOOD AVE JACKSONVILLE FL 32205

Manatee Stamp Club
4818 COMMONWEALTH RD PALMETTO FL 34221

Missile Stamp Club
P.O. BOX 362321 MELBOURNE FL 32936-2321

New Port Richey Area Stamp Club, Inc.
P.O. BOX 684 NEW PORT RICHEY FL 34656-0684

Osceola Stamp Club
3406 RESTFUL PL KISSIMMEE FL 34747

Port Charlotte Stamp Club
P.O. BOX 3465 PORT CHARLOTTE FL 33949-3645

Port St. Lucie Stamp Club
6009 LANTANA DR FORT PIERCE FL 34951

Ridge Stamp Club of Lakeland, Inc.
P O BOX 763 ZEPHYRHILLS, FL 33539

St. Augustine Stamp Club
24 D'ALLYON AVE ST AUGUSTINE FL 32084

St. Petersburg Stamp Club
P.O. BOX 546 ST PETERSBURG FL 33731-0546

Sarasota Philatelic Club, Inc.
P.O. BOX 3553 SARASOTA FL 34230-3553

Scandinavian Collectors Club, #23
1179 PINE RIDGE CIR W A1 TARPON SPRINGS 34689

Silver Springs Shores Stamp Club
12 SILVER WAY Ocala FL 34472-2307

South Miami Stamp Club
9025 SW 72nd ST MIAMI FL 33173

Tallahassee Stamp and Cover Club
P.O. BOX 653 TALLAHASSEE FL 32302-0653

Tampa Collectors Club
P.O. BOX 24831 TAMPA FL 33623-4831

Titusville-Moonport Stamp Club
P.O. 6071 TITUSVILLE FL 32782-6071

Venice Stamp Club
P.O. BOX 1501 VENICE FL 34285-1501

West Volusia Stamp Club
509 E PENNSYLVANIA AVE DELAND FL 32724

Winter Haven Stamp Club
1435 DREXEL AVE NE WINTER HAVEN FL 33881



SAVE THE
FLORIDA
MANATEE

STAMP SHOW

SARASOTA NATIONAL STAMP EXHIBITION

SARASOTA MUNICIPAL AUDITORIUM

801 N. Tamiami Trail
Sarasota, FL

JAN. 31st, FEB 1st, & 2nd 1997

SHOW HOURS

FRI & SAT 10 A.M. TO 6 P.M.

SUNDAY 10 A.M. TO 4 P.M.

SHOW THEME

AMERICAN CAROUSELS

SPECIAL SHOW CANCEL AND CACHET

2000 PAGES OF EXHIBITS

28 DEALERS U.S. POSTAL SERVICE

ADMISSION FREE FREE PARKING

INFORMATION FROM:
SARASOTA PHILATELIC CLUB
P. O. BOX 3553
SARASOTA, FL 34230

FLORIDA STAMP DEALERS ASSOCIATION, INC.

First in
Service



Dependable

Always

*For information on one of the nation's most
active stamp dealers associations....*

CONTACT

Randy Savedow
Membership Chairman
P. O. Box 421
Holly Hill, FL 32017